

## Product datasheet for **TA349744**

### CARD11 Rabbit Polyclonal Antibody

#### Product data:

Product Type:	Primary Antibodies
Applications:	IHC
Recommended Dilution:	IHC: 50-200 Positive control: Human liver cancer Predicted cell location: Cytoplasm or Nucleus
Reactivity:	Human, Mouse
Host:	Rabbit
Isotype:	IgG
Clonality:	Polyclonal
Immunogen:	Fusion protein of human CARD11
Formulation:	pH7.4 PBS, 0.05% NaN3, 40% GlycerolIn
Concentration:	lot specific
Purification:	Antigen affinity purification
Conjugation:	Unconjugated
Storage:	Store at -20°C as received.
Stability:	Stable for 12 months from date of receipt.
Gene Name:	caspase recruitment domain family member 11
Database Link:	<a href="#">NP_115791</a> <a href="#">Entrez Gene 108723 Mouse</a> <a href="#">Entrez Gene 84433 Human</a> <a href="#">Q9BXL7</a>

**Background:** The protein encoded by this gene belongs to the membrane-associated guanylate kinase (MAGUK) family, a class of proteins that functions as molecular scaffolds for the assembly of multiprotein complexes at specialized regions of the plasma membrane. This protein is also a member of the CARD protein family, which is defined by carrying a characteristic caspase-associated recruitment domain (CARD). This protein has a domain structure similar to that of CARD14 protein. The CARD domains of both proteins have been shown to specifically interact with BCL10, a protein known to function as a positive regulator of cell apoptosis and NF-kappaB activation.



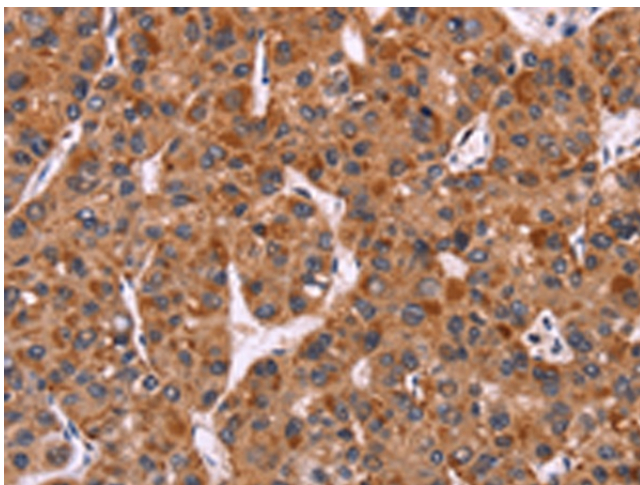
[View online »](#)

**Synonyms:** BENTA; BIMP3; CARMA1; IMD11; PPBL

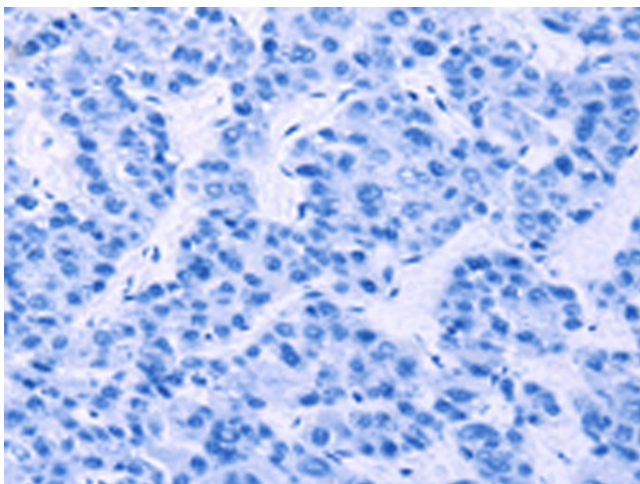
**Protein Families:** Druggable Genome

**Protein Pathways:** B cell receptor signaling pathway, T cell receptor signaling pathway

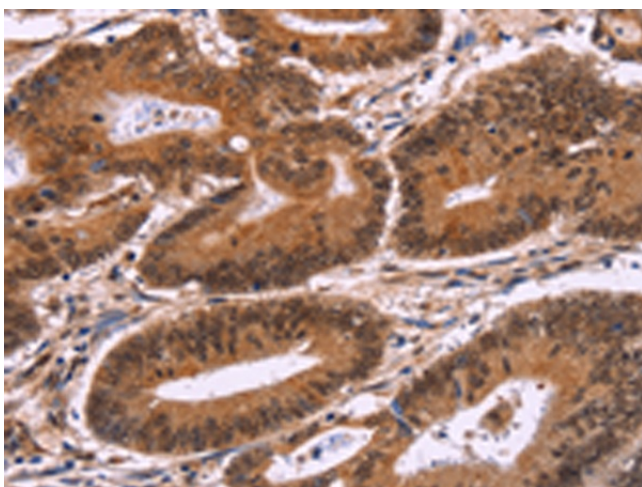
**Product images:**



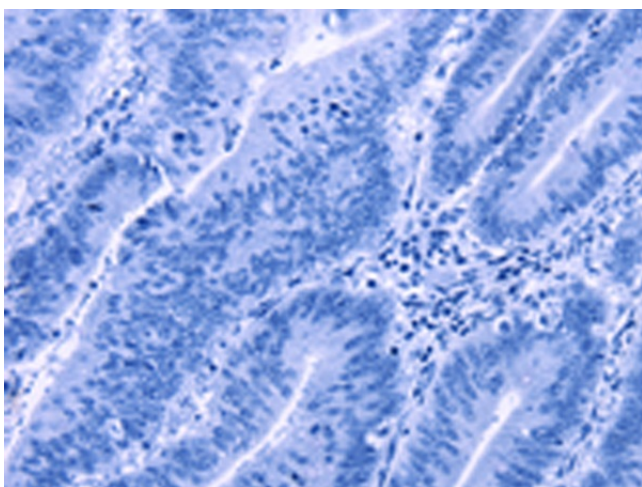
Immunohistochemistry of paraffin-embedded Human liver cancer tissue using TA349744 (CARD11 Antibody) at dilution 1/40 (Original magnification:  $\times 200$ )



Immunohistochemistry of paraffin-embedded Human liver cancer tissue using TA349744 (CARD11 Antibody) at dilution 1/40, treated with fusion protein. (Original magnification:  $\times 200$ )



Immunohistochemistry of paraffin-embedded Human colon cancer tissue using TA349744 (CARD11 Antibody) at dilution 1/40 (Original magnification:  $\times 200$ )



Immunohistochemistry of paraffin-embedded Human colon cancer tissue using TA349744 (CARD11 Antibody) at dilution 1/40, treated with fusion protein. (Original magnification:  $\times 200$ )