

Product datasheet for **TA349736**

Calumenin (CALU) Rabbit Polyclonal Antibody

Product data:

Product Type:	Primary Antibodies
Applications:	IHC, WB
Recommended Dilution:	WB: 500-2000 WB positive control: Human placenta tissue IHC: 100-300 Positive control: Human liver cancer Predicted cell location: Cytoplasm
Reactivity:	Human, Mouse, Rat
Host:	Rabbit
Isotype:	IgG
Clonality:	Polyclonal
Immunogen:	Fusion protein of human CALU
Formulation:	pH7.4 PBS, 0.05% NaN ₃ , 40% Glycerol
Concentration:	lot specific
Purification:	Antigen affinity purification
Conjugation:	Unconjugated
Storage:	Store at -20°C as received.
Stability:	Stable for 12 months from date of receipt.
Predicted Protein Size:	37 kDa
Gene Name:	calumenin
Database Link:	NP_001210 Entrez Gene 12321 Mouse Entrez Gene 64366 Rat Entrez Gene 813 Human O43852

Background: The product of this gene is a calcium-binding protein localized in the endoplasmic reticulum (ER) and it is involved in such ER functions as protein folding and sorting. This protein belongs to a family of multiple EF-hand proteins (CERC) that include reticulocalbin, ERC-55, and Cab45 and the product of this gene. Alternatively spliced transcript variants encoding different isoforms have been identified

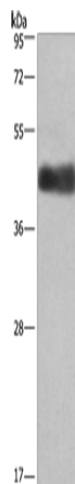


[View online »](#)

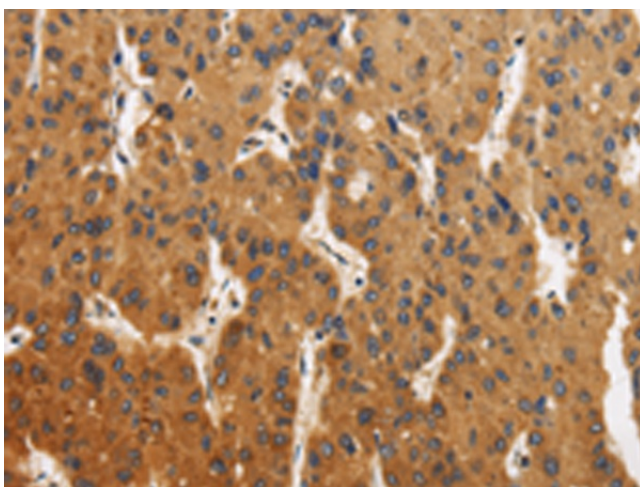
Synonyms: FLJ90608

Protein Families: Secreted Protein

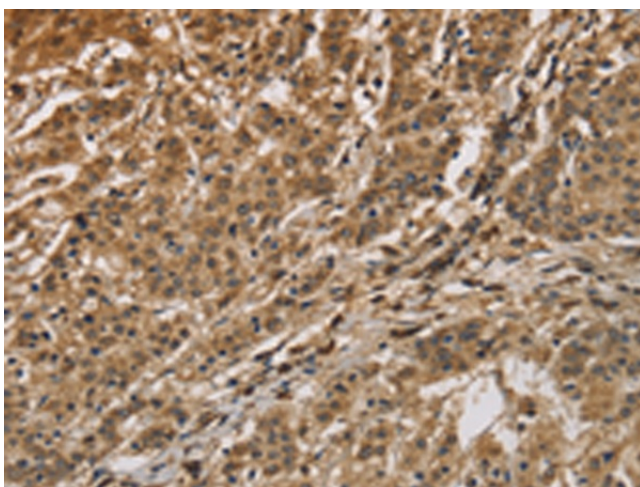
Product images:



Gel: 8%SDS-PAGE
Lysate: 40 µg
Lane: Human placenta tissue
Primary antibody: TA349736 (CALU Antibody) at dilution 1/400
Secondary antibody: Goat anti rabbit IgG at 1/8000 dilution
Exposure time: 1 minute



Immunohistochemistry of paraffin-embedded Human liver cancer tissue using TA349736 (CALU Antibody) at dilution 1/40. (Original magnification: x200)



Immunohistochemistry of paraffin-embedded Human gastric cancer tissue using TA349736 (CALU Antibody) at dilution 1/40. (Original magnification: ×200)