

## Product datasheet for **TA349734**

### Calpastatin (CAST) Rabbit Polyclonal Antibody

#### Product data:

Product Type:	Primary Antibodies
Applications:	IHC, WB
Recommended Dilution:	WB: 500-2000 WB positive control: Lovo cells IHC: 100-300 Positive control: Human gastric cancer Predicted cell location: Cytoplasm
Reactivity:	Human
Host:	Rabbit
Isotype:	IgG
Clonality:	Polyclonal
Immunogen:	Fusion protein of human CAST
Formulation:	pH7.4 PBS, 0.05% NaN <sub>3</sub> , 40% Glycerol
Concentration:	lot specific
Purification:	Antigen affinity purification
Conjugation:	Unconjugated
Storage:	Store at -20°C as received.
Stability:	Stable for 12 months from date of receipt.
Predicted Protein Size:	77 kDa
Gene Name:	calpastatin
Database Link:	<a href="#">NP_001741</a> <a href="#">Entrez Gene 831 Human</a> <a href="#">P20810</a>



[View online »](#)

**Background:**

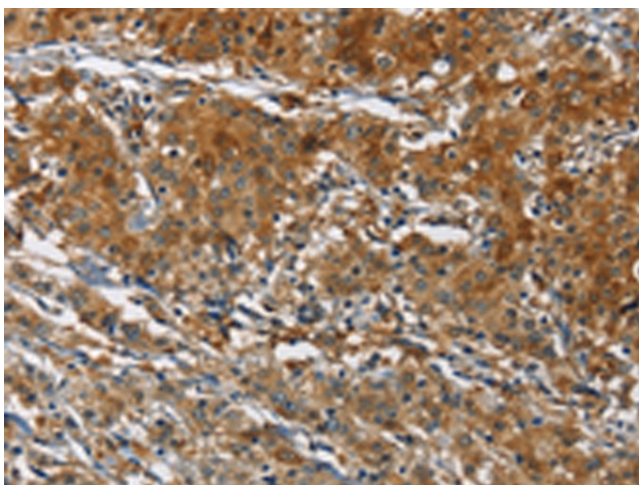
The protein encoded by this gene is an endogenous calpain (calcium-dependent cysteine protease) inhibitor. It consists of an N-terminal domain L and four repetitive calpain-inhibition domains (domains 1-4), and it is involved in the proteolysis of amyloid precursor protein. The calpain/calpastatin system is involved in numerous membrane fusion events, such as neural vesicle exocytosis and platelet and red-cell aggregation. The encoded protein is also thought to affect the expression levels of genes encoding structural or regulatory proteins. Alternatively spliced transcript variants encoding different isoforms have been described.

**Synonyms:**

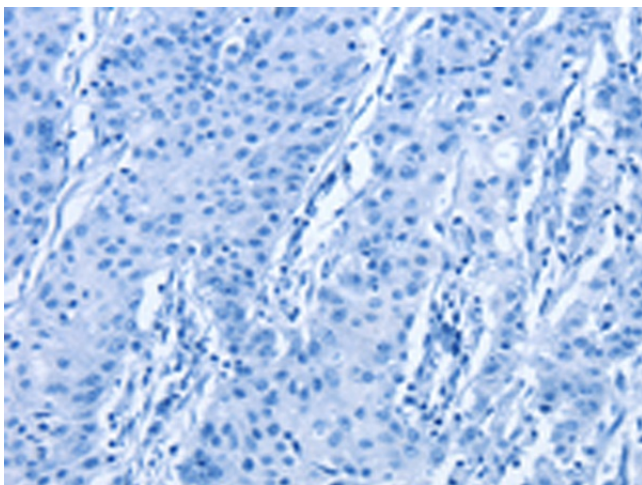
BS-17; PLACK

**Product images:**

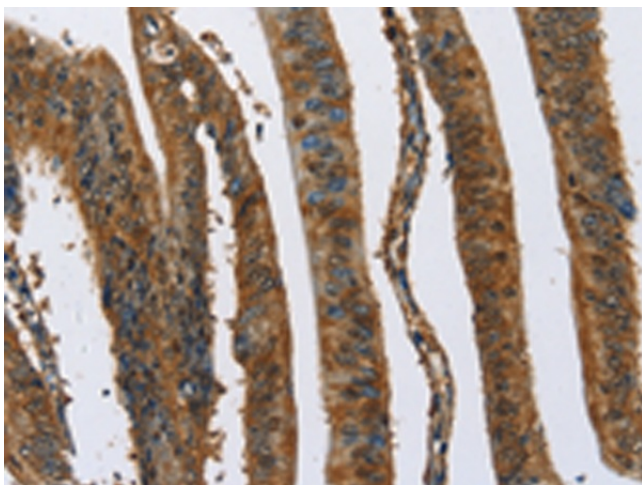

Gel: 8%SDS-PAGE  
 Lysate: 40 µg  
 Lane: Lovo cells  
 Primary antibody: TA349734 (CAST Antibody) at dilution 1/750  
 Secondary antibody: Goat anti rabbit IgG at 1/8000 dilution  
 Exposure time: 7 seconds



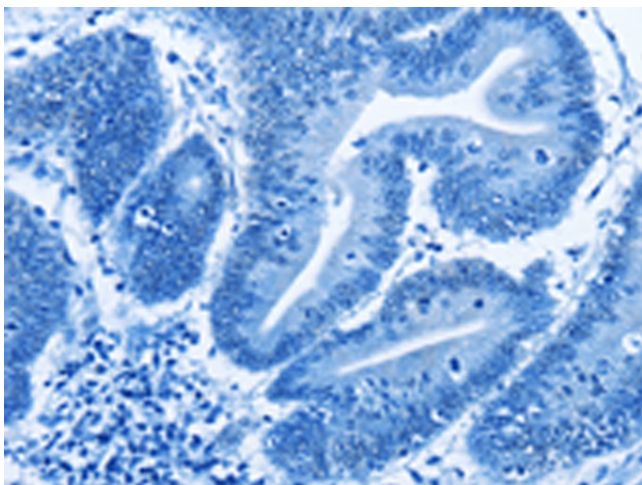
Immunohistochemistry of paraffin-embedded Human gastric cancer tissue using TA349734 (CAST Antibody) at dilution 1/70 (Original magnification: ×200)



Immunohistochemistry of paraffin-embedded Human gastric cancer tissue using TA349734 (CAST Antibody) at dilution 1/70, treated with fusion protein. (Original magnification:  $\times 200$ )



Immunohistochemistry of paraffin-embedded Human colon cancer tissue using TA349734 (CAST Antibody) at dilution 1/70 (Original magnification:  $\times 200$ )



Immunohistochemistry of paraffin-embedded Human colon cancer tissue using TA349734 (CAST Antibody) at dilution 1/70, treated with fusion protein. (Original magnification:  $\times 200$ )