

## Product datasheet for **TA349730**

### **CACNB1 Rabbit Polyclonal Antibody**

#### **Product data:**

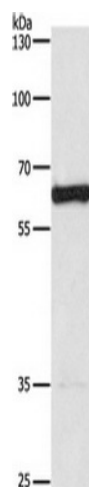
<b>Product Type:</b>	Primary Antibodies
<b>Applications:</b>	IHC, WB
<b>Recommended Dilution:</b>	ELISA: 1000-2000, WB: 200-1000, IHC: 50-200
<b>Reactivity:</b>	Human, Mouse, Rat
<b>Host:</b>	Rabbit
<b>Isotype:</b>	IgG
<b>Clonality:</b>	Polyclonal
<b>Immunogen:</b>	Fusion protein of human CACNB1
<b>Formulation:</b>	pH7.4 PBS, 0.05% NaN <sub>3</sub> , 40% Glycerol
<b>Concentration:</b>	lot specific
<b>Purification:</b>	Antigen affinity purification
<b>Conjugation:</b>	Unconjugated
<b>Storage:</b>	Store at -20°C as received.
<b>Stability:</b>	Stable for 12 months from date of receipt.
<b>Predicted Protein Size:</b>	66 kDa
<b>Gene Name:</b>	calcium voltage-gated channel auxiliary subunit beta 1
<b>Database Link:</b>	<a href="#">NP_954855</a> <a href="#">Entrez Gene 12295 MouseEntrez Gene 50688 RatEntrez Gene 782 Human Q02641</a>
<b>Background:</b>	The protein encoded by this gene belongs to the calcium channel beta subunit family. It plays an important role in the calcium channel by modulating G protein inhibition, increasing peak calcium current, controlling the alpha-1 subunit membrane targeting and shifting the voltage dependence of activation and inactivation. Alternative splicing occurs at this locus and three transcript variants encoding three distinct isoforms have been identified.
<b>Synonyms:</b>	CAB1; CACNLB1; CCHLB1
<b>Protein Families:</b>	Druggable Genome, Ion Channels: Other



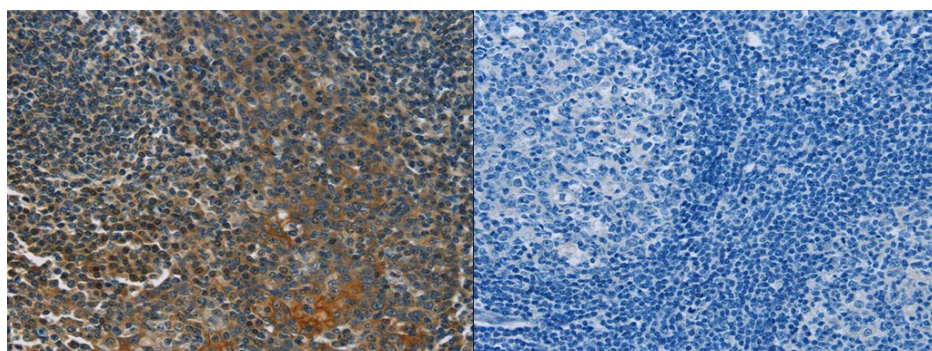
[View online »](#)

**Protein Pathways:** Arrhythmogenic right ventricular cardiomyopathy (ARVC), Cardiac muscle contraction, Dilated cardiomyopathy, Hypertrophic cardiomyopathy (HCM), MAPK signaling pathway

**Product images:**



Gel: 8%SDS-PAGE, Lysate: 40 ug, Lane: Mouse spleen tissue, Primary antibody: (CACNB1 Antibody) at dilution 1/200, Secondary antibody: Goat anti rabbit IgG at 1/8000 dilution, Exposure time: 3 minutes



The image on the left is immunohistochemistry of paraffin-embedded Human tonsil tissue using (CACNB1 Antibody) at dilution 1/50, on the right is treated with fusion protein. (Original magnification:  $\times 200$ )