

Product datasheet for **TA349729S**

CABLES1 Rabbit Polyclonal Antibody

Product data:

Product Type:	Primary Antibodies
Applications:	IHC, WB
Recommended Dilution:	WB: 500-2000 WB positive control: Mouse brain and heart tissue, mouse liver tissue IHC: 25-100 Positive control: Human prostate cancer Predicted cell location: Nucleus and Cytoplasm
Reactivity:	Human, Mouse
Host:	Rabbit
Isotype:	IgG
Clonality:	Polyclonal
Immunogen:	Fusion protein of human CABLES1
Formulation:	pH7.4 PBS, 0.05% NaN ₃ , 40% Glycerol
Purification:	Antigen affinity purification
Conjugation:	Unconjugated
Storage:	Store at -20°C as received.
Stability:	Stable for 12 months from date of receipt.
Predicted Protein Size:	68 kDa
Gene Name:	Cdk5 and Abl enzyme substrate 1
Database Link:	NP_612384 Entrez Gene 63955 Mouse Entrez Gene 91768 Human Q8TDN4

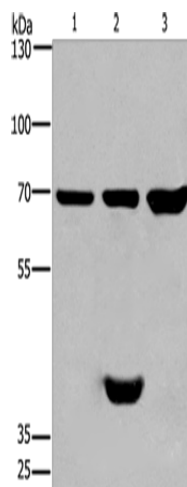
Background: This gene encodes a protein involved in regulation of the cell cycle through interactions with several cyclin-dependent kinases. One study (PMID: 16177568) reported aberrant splicing of transcripts from this gene which results in removal of the cyclin binding domain only in human cancer cells, and reduction in gene expression was shown in colorectal cancers (PMID: 17982127). Multiple transcript variants encoding different isoforms have been found for this gene.



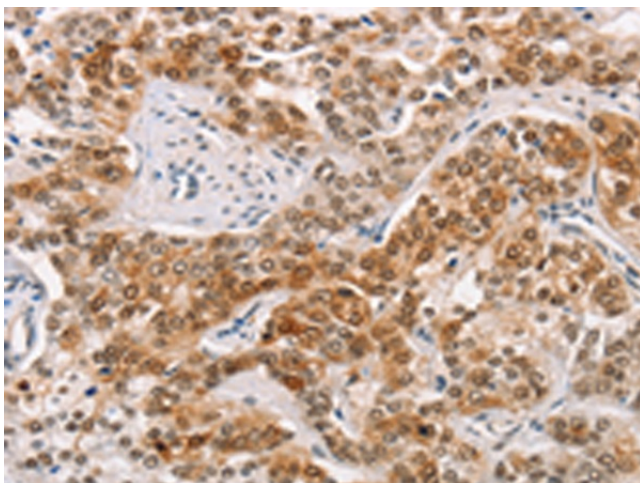
[View online »](#)

Synonyms: CABL1; CABLES; HsT2563; IK3-1

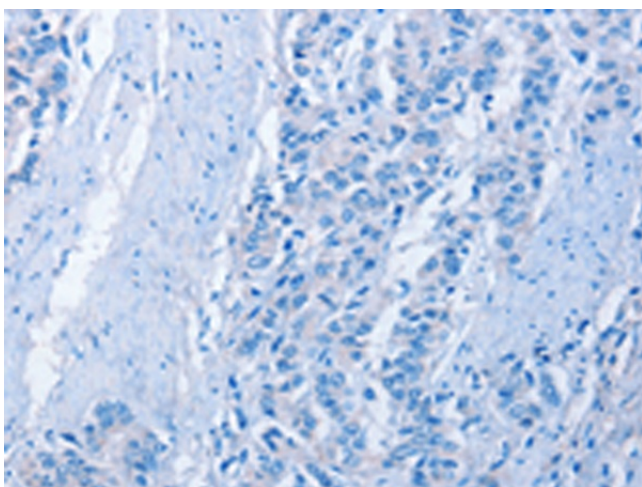
Product images:



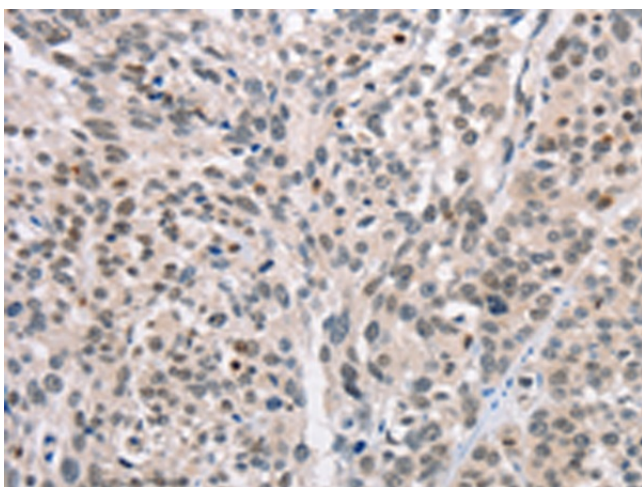
Gel: 6%SDS-PAGE
Lysate: 40 μ g
Lane 1-3: Mouse brain tissue
Mouse heart tissue
mouse liver tissue
Primary antibody: [TA349729] (CABLES1 Antibody) at dilution 1/350
Secondary antibody: Goat anti rabbit IgG at 1/8000 dilution
Exposure time: 1 minute



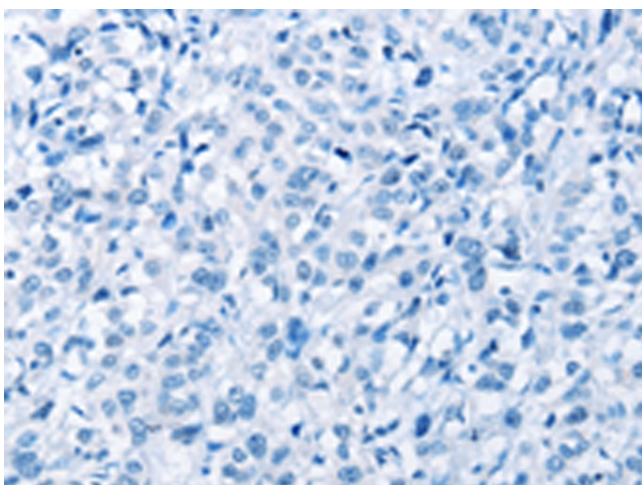
Immunohistochemistry of paraffin-embedded Human prostate cancer tissue using [TA349729] (CABLES1 Antibody) at dilution 1/15 (Original magnification: \times 200)



Immunohistochemistry of paraffin-embedded Human prostate cancer tissue using [TA349729] (CABLES1 Antibody) at dilution 1/15, treated with fusion protein. (Original magnification: ×200)



Immunohistochemistry of paraffin-embedded Human esophagus cancer tissue using [TA349729] (CABLES1 Antibody) at dilution 1/15 (Original magnification: ×200)



Immunohistochemistry of paraffin-embedded Human esophagus cancer tissue using [TA349729] (CABLES1 Antibody) at dilution 1/15, treated with fusion protein. (Original magnification: ×200)