

## Product datasheet for **TA349729**

### **CABLES1 Rabbit Polyclonal Antibody**

#### **Product data:**

Product Type:	Primary Antibodies
Applications:	IHC, WB
Recommended Dilution:	WB: 500-2000 WB positive control: Mouse brain and heart tissue, mouse liver tissue IHC: 25-100 Positive control: Human prostate cancer Predicted cell location: Nucleus and Cytoplasm
Reactivity:	Human, Mouse
Host:	Rabbit
Isotype:	IgG
Clonality:	Polyclonal
Immunogen:	Fusion protein of human CABLES1
Formulation:	pH7.4 PBS, 0.05% NaN <sub>3</sub> , 40% Glycerol
Concentration:	lot specific
Purification:	Antigen affinity purification
Conjugation:	Unconjugated
Storage:	Store at -20°C as received.
Stability:	Stable for 12 months from date of receipt.
Predicted Protein Size:	68 kDa
Gene Name:	Cdk5 and Abl enzyme substrate 1
Database Link:	<a href="#">NP_612384</a> <a href="#">Entrez Gene 63955 Mouse</a> <a href="#">Entrez Gene 91768 Human</a> <a href="#">Q8TDN4</a>



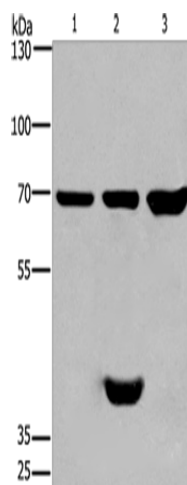
[View online »](#)

**Background:**

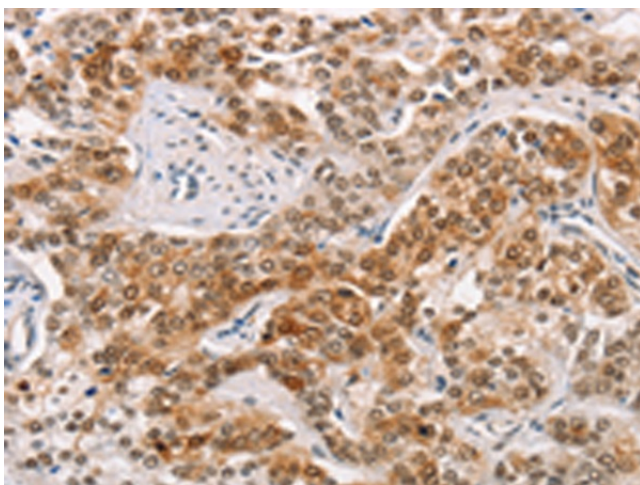
This gene encodes a protein involved in regulation of the cell cycle through interactions with several cyclin-dependent kinases. One study (PMID: 16177568) reported aberrant splicing of transcripts from this gene which results in removal of the cyclin binding domain only in human cancer cells, and reduction in gene expression was shown in colorectal cancers (PMID: 17982127). Multiple transcript variants encoding different isoforms have been found for this gene.

**Synonyms:**

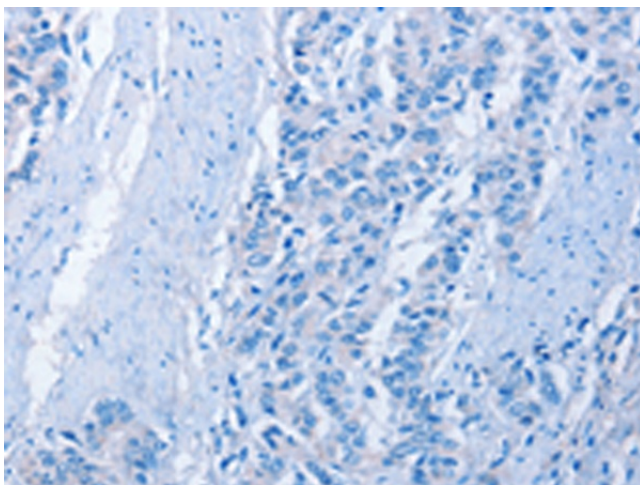
CABL1; CABLES; HsT2563; IK3-1

**Product images:**

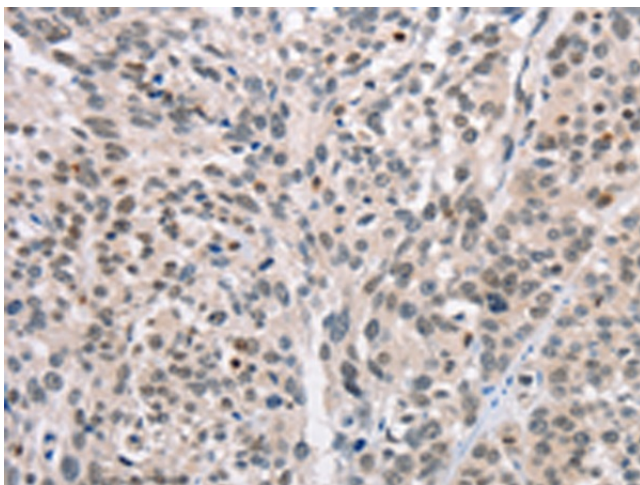
Gel: 6%SDS-PAGE  
Lysate: 40 µg  
Lane 1-3: Mouse brain tissue  
Mouse heart tissue  
mouse liver tissue  
Primary antibody: TA349729 (CABLES1 Antibody)  
at dilution 1/350  
Secondary antibody: Goat anti rabbit IgG at  
1/8000 dilution  
Exposure time: 1 minute



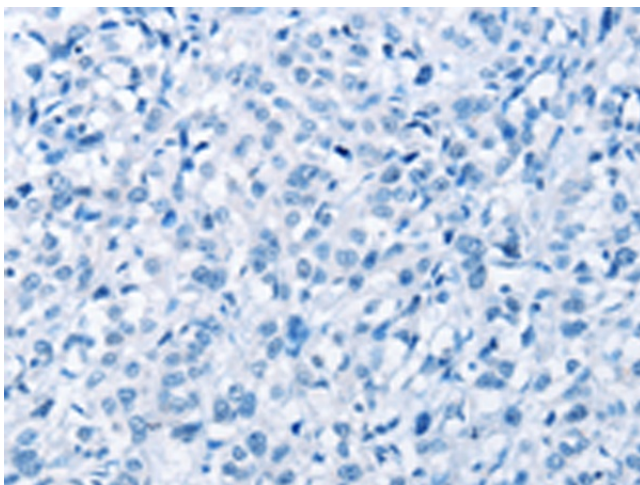
Immunohistochemistry of paraffin-embedded  
Human prostate cancer tissue using TA349729  
(CABLES1 Antibody) at dilution 1/15 (Original  
magnification: ×200)



Immunohistochemistry of paraffin-embedded Human prostate cancer tissue using TA349729 (CABLES1 Antibody) at dilution 1/15, treated with fusion protein. (Original magnification:  $\times 200$ )



Immunohistochemistry of paraffin-embedded Human esophagus cancer tissue using TA349729 (CABLES1 Antibody) at dilution 1/15 (Original magnification:  $\times 200$ )



Immunohistochemistry of paraffin-embedded Human esophagus cancer tissue using TA349729 (CABLES1 Antibody) at dilution 1/15, treated with fusion protein. (Original magnification:  $\times 200$ )