

Product datasheet for **TA349728S**

CAB39L Rabbit Polyclonal Antibody

Product data:

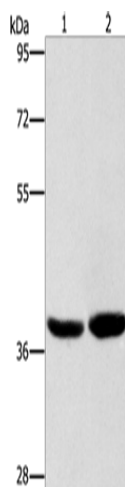
Product Type:	Primary Antibodies
Applications:	IHC, WB
Recommended Dilution:	WB: 500-2000 WB positive control: Human fetal brain tissue and 231 cells IHC: 50-200 Positive control: Human thyroid cancer Predicted cell location: Cytoplasm
Reactivity:	Human, Mouse
Host:	Rabbit
Isotype:	IgG
Clonality:	Polyclonal
Immunogen:	Fusion protein of human CAB39L
Formulation:	pH7.4 PBS, 0.05% NaN ₃ , 40% Glycerol
Purification:	Antigen affinity purification
Conjugation:	Unconjugated
Storage:	Store at -20°C as received.
Stability:	Stable for 12 months from date of receipt.
Predicted Protein Size:	39 kDa
Gene Name:	calcium binding protein 39 like
Database Link:	NP_112187 Entrez Gene 69008 Mouse Entrez Gene 81617 Human Q9H9S4
Background:	Calcium-binding protein 39-like is a protein that in humans is encoded by the CAB39L gene. CAB39L (calcium binding protein 39-like), also known as MO25L (MO25-like) or MO2L, is a 337 amino acid protein that is similar to MO25 and is found in the serum of nearly half of all patients diagnosed with acute monocytic leukemia. This suggests a role for CAB39L in carcinogenesis.
Synonyms:	bA103J18.3; MO2L; MO25-BETA



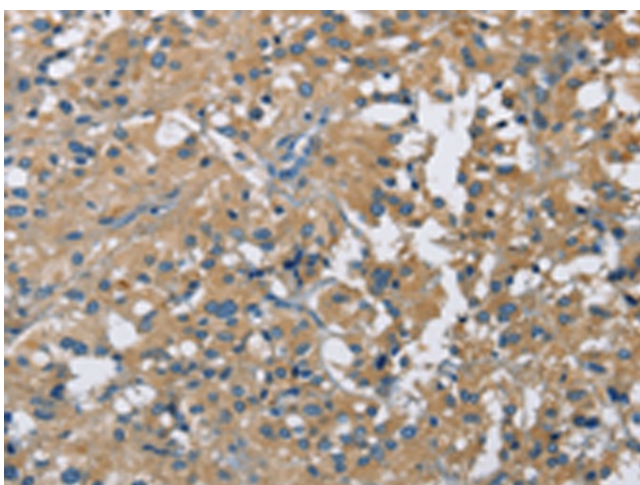
[View online »](#)

Protein Pathways: mTOR signaling pathway

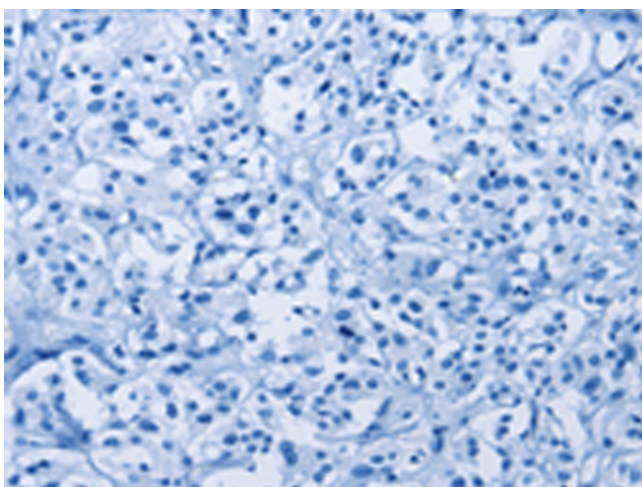
Product images:



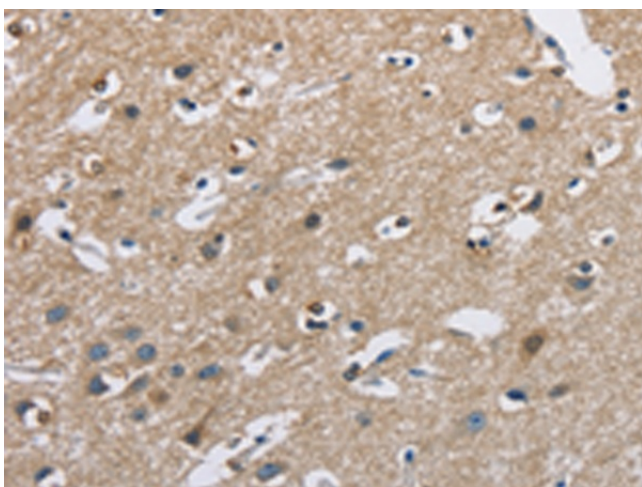
Gel: 8%SDS-PAGE
Lysate: 40 µg
Lane 1-2: Human fetal brain tissue
231 cells
Primary antibody: [TA349728] (CAB39L Antibody)
at dilution 1/400
Secondary antibody: Goat anti rabbit IgG at
1/8000 dilution
Exposure time: 15 seconds



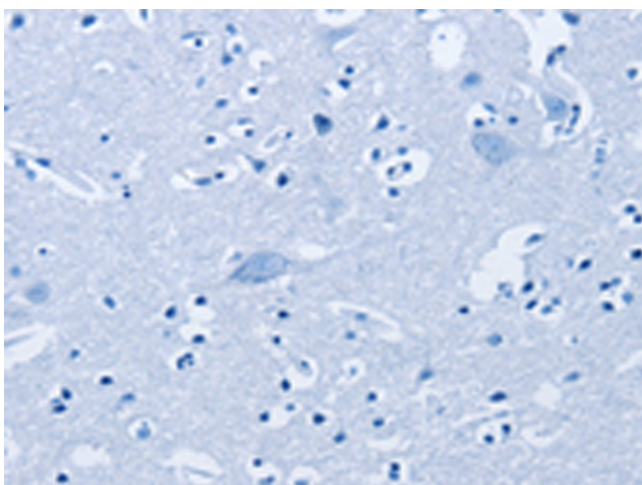
Immunohistochemistry of paraffin-embedded
Human thyroid cancer tissue using [TA349728]
(CAB39L Antibody) at dilution 1/40 (Original
magnification: ×200)



Immunohistochemistry of paraffin-embedded Human thyroid cancer tissue using [TA349728] (CAB39L Antibody) at dilution 1/40, treated with fusion protein. (Original magnification: $\times 200$)



Immunohistochemistry of paraffin-embedded Human brain tissue using [TA349728] (CAB39L Antibody) at dilution 1/40 (Original magnification: $\times 200$)



Immunohistochemistry of paraffin-embedded Human brain tissue using [TA349728] (CAB39L Antibody) at dilution 1/40, treated with fusion protein. (Original magnification: $\times 200$)