

Product datasheet for **TA349727S**

C3AR1 Rabbit Polyclonal Antibody

Product data:

| | |
|-------------------------|---|
| Product Type: | Primary Antibodies |
| Applications: | IHC, WB |
| Recommended Dilution: | WB: 500-2000 WB positive control: Mouse brain tissue lysate IHC: 50-200 Positive control: Human liver cancer Predicted cell location: Cell membrane |
| Reactivity: | Human, Mouse |
| Host: | Rabbit |
| Isotype: | IgG |
| Clonality: | Polyclonal |
| Immunogen: | Fusion protein of human C3AR1 |
| Formulation: | pH7.4 PBS, 0.05% NaN ₃ , 40% Glycerol |
| Purification: | Antigen affinity purification |
| Conjugation: | Unconjugated |
| Storage: | Store at -20°C as received. |
| Stability: | Stable for 12 months from date of receipt. |
| Predicted Protein Size: | 54 kDa |
| Gene Name: | complement component 3a receptor 1 |
| Database Link: | NP_004045 Entrez Gene 12267 Mouse Entrez Gene 719 Human Q16581 |



[View online »](#)

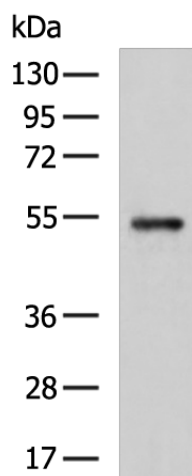
Background: The C3a receptor also known as complement component 3a receptor 1 (C3AR1) is a G protein-coupled receptorprotein involved in the complement system. Receptor for the chemotactic and inflammatory peptide anaphylatoxin C3a. This receptor stimulates chemotaxis, granule enzyme release and superoxide anion production. Widely expressed in several differentiated hematopoietic cell lines, in the lung, spleen, ovary, placenta, small intestine, throughout the brain, heart, and endothelial cells. Mostly expressed in lymphoid tissues.

Synonyms: AZ3B; C3AR; HNFAG09

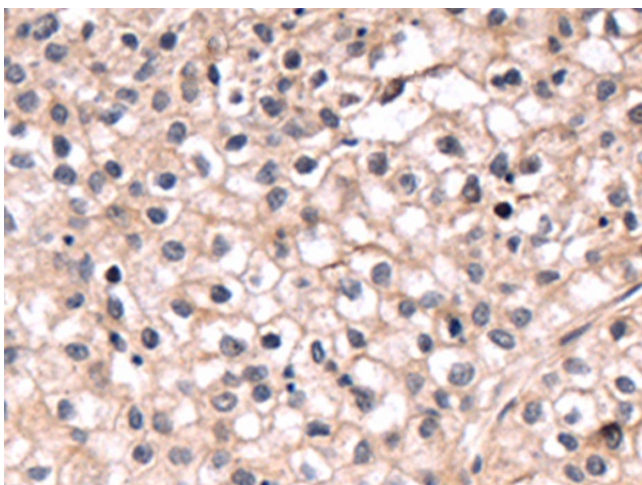
Protein Families: Druggable Genome, GPCR, Transmembrane

Protein Pathways: Complement and coagulation cascades, Neuroactive ligand-receptor interaction

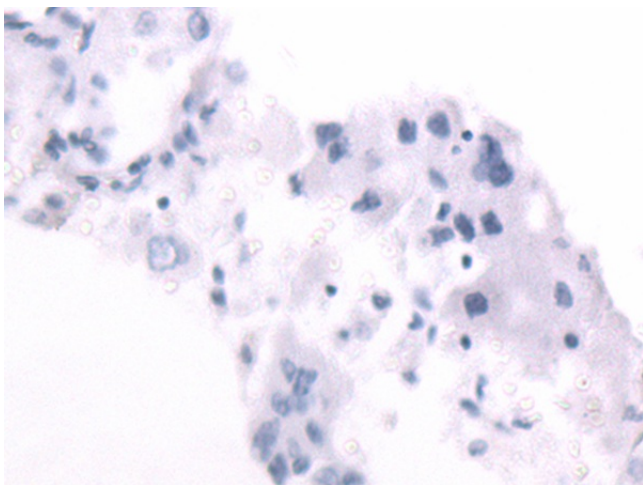
Product images:



Gel: 8%SDS-PAGE
Lysate: 40 µg
Lane: Mouse brain tissue lysate
Primary antibody: [TA349727] (C3AR1 Antibody) at dilution 1/800
Secondary antibody: Goat anti rabbit IgG at 1/5000 dilution
Exposure time: 40 seconds



Immunohistochemistry of paraffin-embedded Human liver cancer tissue using [TA349727] (C3AR1 Antibody) at dilution 1/70 (Original magnification: ×200)



Immunohistochemistry of paraffin-embedded Human liver cancer tissue using [TA349727] (C3AR1 Antibody) at dilution 1/70, treated with fusion protein. (Original magnification: ×200)