

## Product datasheet for **TA349727**

### C3AR1 Rabbit Polyclonal Antibody

#### Product data:

Product Type:	Primary Antibodies
Applications:	IHC, WB
Recommended Dilution:	WB: 500-2000 WB positive control: Mouse brain tissue lysate IHC: 50-200 Positive control: Human liver cancer Predicted cell location: Cell membrane
Reactivity:	Human, Mouse
Host:	Rabbit
Isotype:	IgG
Clonality:	Polyclonal
Immunogen:	Fusion protein of human C3AR1
Formulation:	pH7.4 PBS, 0.05% NaN <sub>3</sub> , 40% Glycerol
Concentration:	lot specific
Purification:	Antigen affinity purification
Conjugation:	Unconjugated
Storage:	Store at -20°C as received.
Stability:	Stable for 12 months from date of receipt.
Predicted Protein Size:	54 kDa
Gene Name:	complement component 3a receptor 1
Database Link:	<a href="#">NP_004045</a> <a href="#">Entrez Gene 12267 Mouse</a> <a href="#">Entrez Gene 719 Human</a> <a href="#">Q16581</a>



[View online »](#)

**Background:** The C3a receptor also known as complement component 3a receptor 1 (C3AR1) is a G protein-coupled receptor protein involved in the complement system. Receptor for the chemotactic and inflammatory peptide anaphylatoxin C3a. This receptor stimulates chemotaxis, granule enzyme release and superoxide anion production. Widely expressed in several differentiated hematopoietic cell lines, in the lung, spleen, ovary, placenta, small intestine, throughout the brain, heart, and endothelial cells. Mostly expressed in lymphoid tissues.

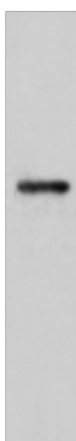
**Synonyms:** AZ3B; C3AR; HNFAG09

**Protein Families:** Druggable Genome, GPCR, Transmembrane

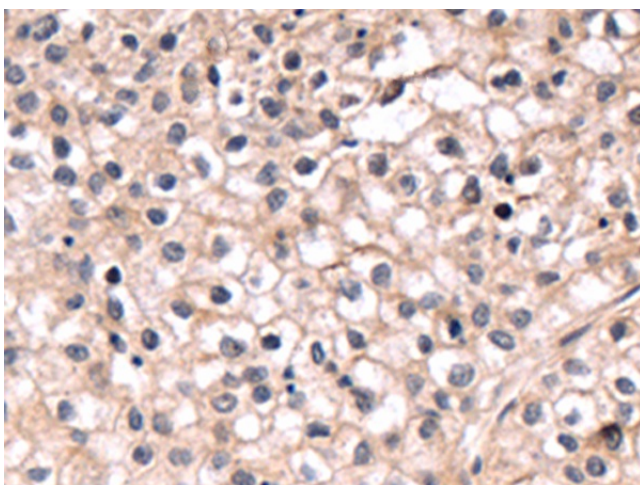
**Protein Pathways:** Complement and coagulation cascades, Neuroactive ligand-receptor interaction

### Product images:

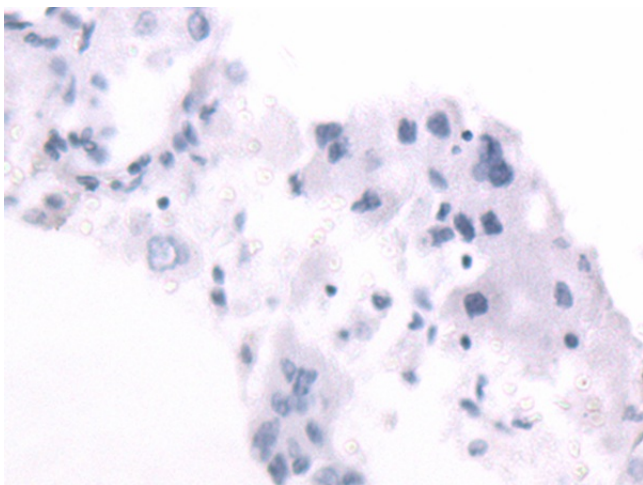
kDa  
130 —  
95 —  
72 —  
55 —  
36 —  
28 —  
17 —



Gel: 8%SDS-PAGE  
Lysate: 40 µg  
Lane: Mouse brain tissue lysate  
Primary antibody: TA349727 (C3AR1 Antibody) at dilution 1/800  
Secondary antibody: Goat anti rabbit IgG at 1/5000 dilution  
Exposure time: 40 seconds



Immunohistochemistry of paraffin-embedded Human liver cancer tissue using TA349727 (C3AR1 Antibody) at dilution 1/70 (Original magnification: ×200)



Immunohistochemistry of paraffin-embedded Human liver cancer tissue using TA349727 (C3AR1 Antibody) at dilution 1/70, treated with fusion protein. (Original magnification: ×200)