

## Product datasheet for **TA349725S**

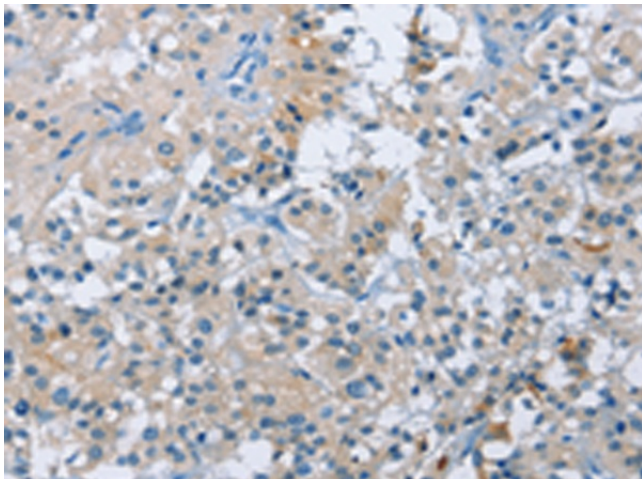
### **BTN2A2 Rabbit Polyclonal Antibody**

#### **Product data:**

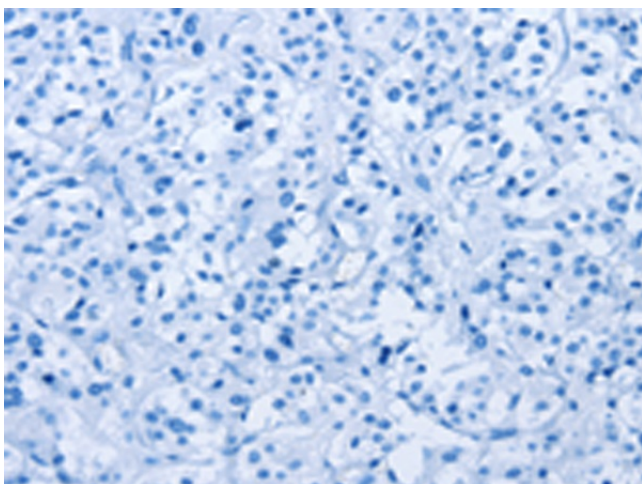
|                       |   |
|-----------------------|---|
| Product Type:         | Primary Antibodies  |
| Applications:         | IHC   |
| Recommended Dilution: | IHC: 25-100<br>Positive control: Human thyroid cancer<br>Predicted cell location: Cytoplasm   |
| Reactivity:           | Human   |
| Host:                 | Rabbit  |
| Isotype:              | IgG   |
| Clonality:            | Polyclonal  |
| Immunogen:            | Fusion protein of human BTN2A2  |
| Formulation:          | pH7.4 PBS, 0.05% NaN <sub>3</sub> , 40% GlycerolIn  |
| Purification:         | Antigen affinity purification   |
| Conjugation:          | Unconjugated  |
| Storage:              | Store at -20°C as received.   |
| Stability:            | Stable for 12 months from date of receipt.  |
| Gene Name:            | butyrophilin subfamily 2 member A2  |
| Database Link:        | <a href="#">NP_853509</a><br><a href="#">Entrez Gene 10385 Human</a><br><a href="#">Q8WVV5</a>  |
| Background:           | Butyrophilin is the major protein associated with fat droplets in the milk. This gene is a member of the BTN2 subfamily of genes, which encode proteins belonging to the butyrophilin protein family. The gene is located in a cluster on chromosome 6, consisting of seven genes belonging to the expanding B7/butyrophilin-like group, a subset of the immunoglobulin gene superfamily. The encoded protein is a type I receptor glycoprotein involved in lipid, fatty-acid and sterol metabolism. Several alternatively spliced transcript variants encoding different isoforms have been found for this gene. |
| Synonyms:             | BT2.2; BTF2; BTN2.2   |
| Protein Families:     | Druggable Genome, Transmembrane   |



[View online »](#)

**Product images:**

Immunohistochemistry of paraffin-embedded Human thyroid cancer tissue using [TA349725] (BTN2A2 Antibody) at dilution 1/50 (Original magnification:  $\times 200$ )



Immunohistochemistry of paraffin-embedded Human thyroid cancer tissue using [TA349725] (BTN2A2 Antibody) at dilution 1/50, treated with fusion protein. (Original magnification:  $\times 200$ )