

Product datasheet for **TA349722**

Non Neuronal Enolase (ENO1) Rabbit Polyclonal Antibody

Product data:

Product Type:	Primary Antibodies
Applications:	IHC, WB
Recommended Dilution:	WB: 500-2000 WB positive control: Hela, A431 and hepG2 cells, mouse brain and liver tissue, mouse pancreas and human fetal brain tissue IHC: 50-200 Positive control: Human liver cancer Predicted cell location: Cytoplasm
Reactivity:	Human, Mouse, Rat
Host:	Rabbit
Isotype:	IgG
Clonality:	Polyclonal
Immunogen:	Fusion protein of human ENO1
Formulation:	pH7.4 PBS, 0.05% NaN ₃ , 40% Glycerol
Concentration:	lot specific
Purification:	Antigen affinity purification
Conjugation:	Unconjugated
Storage:	Store at -20°C as received.
Stability:	Stable for 12 months from date of receipt.
Predicted Protein Size:	47 kDa
Gene Name:	enolase 1
Database Link:	NP_001419 Entrez Gene 13806 Mouse Entrez Gene 24333 Rat Entrez Gene 2023 Human P06733



[View online »](#)

Background:

This gene encodes alpha-enolase, one of three enolase isoenzymes found in mammals. Each isoenzyme is a homodimer composed of 2 alpha, 2 gamma, or 2 beta subunits, and functions as a glycolytic enzyme. Alpha-enolase in addition, functions as a structural lens protein (tau-crystallin) in the monomeric form. Alternative splicing of this gene results in a shorter isoform that has been shown to bind to the c-myc promoter and function as a tumor suppressor. Several pseudogenes have been identified, including one on the long arm of chromosome 1. Alpha-enolase has also been identified as an autoantigen in Hashimoto encephalopathy.

Synonyms:

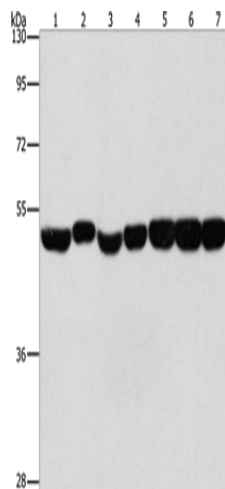
ENO1L1; MPB1; NNE; PPH

Protein Families:

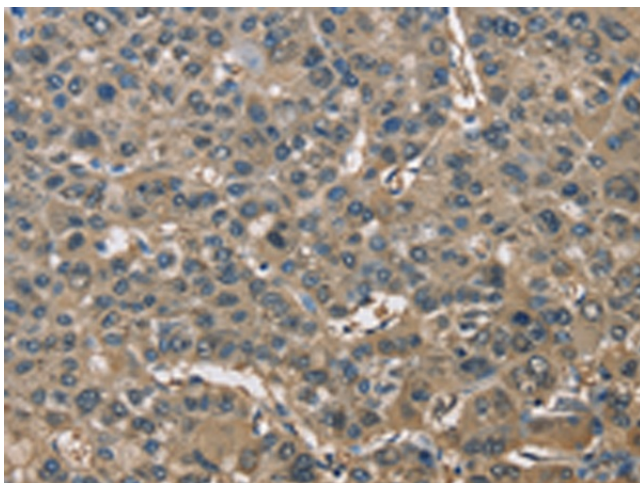
Druggable Genome, Transcription Factors

Protein Pathways:

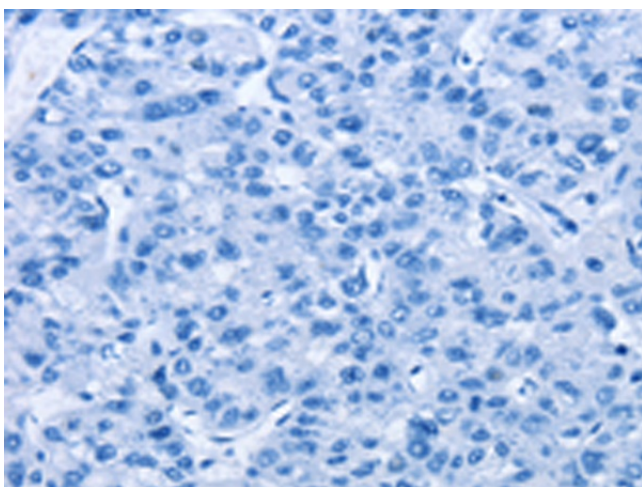
Glycolysis / Gluconeogenesis, Metabolic pathways, RNA degradation

Product images:


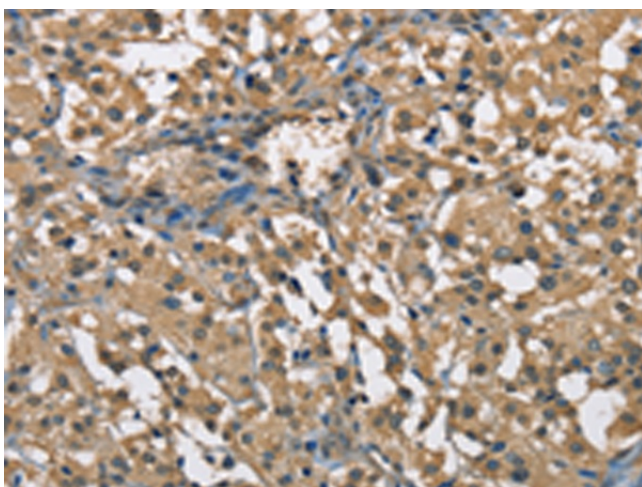
Gel: 8%SDS-PAGE
 Lysate: 40 µg
 Lane 1-7: HeLa cells
 A431 cells
 hepG2 cells
 mouse brain tissue
 Mouse liver tissue
 mouse pancreas tissue
 human fetal brain tissue
 Primary antibody: TA349722 (ENO1 Antibody) at dilution 1/700
 Secondary antibody: Goat anti rabbit IgG at 1/8000 dilution
 Exposure time: 10 seconds



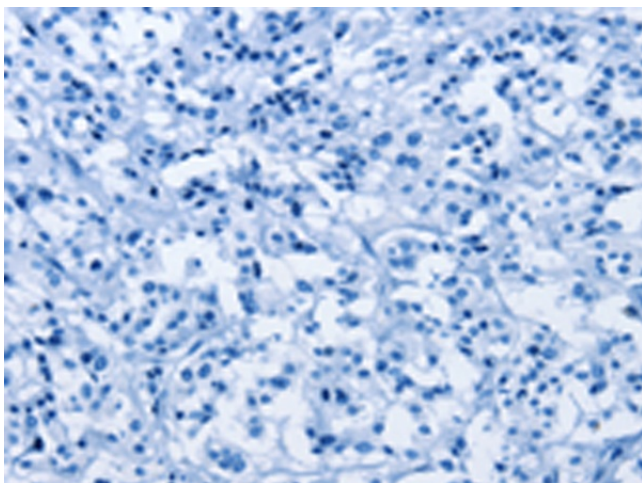
Immunohistochemistry of paraffin-embedded Human liver cancer tissue using TA349722 (ENO1 Antibody) at dilution 1/60 (Original magnification: ×200)



Immunohistochemistry of paraffin-embedded Human liver cancer tissue using TA349722 (ENO1 Antibody) at dilution 1/60, treated with fusion protein. (Original magnification: x200)



Immunohistochemistry of paraffin-embedded Human thyroid cancer tissue using TA349722 (ENO1 Antibody) at dilution 1/60 (Original magnification: x200)



Immunohistochemistry of paraffin-embedded Human thyroid cancer tissue using TA349722 (ENO1 Antibody) at dilution 1/60, treated with fusion protein. (Original magnification: x200)