

Product datasheet for **TA349720**

BRCC45 (BRE) Rabbit Polyclonal Antibody

Product data:

Product Type:	Primary Antibodies
Applications:	IHC, WB
Recommended Dilution:	WB: 500-2000 WB positive control: A431 cells IHC: 50-200 Positive control: Human liver cancer Predicted cell location: Cytoplasm
Reactivity:	Human, Mouse, Rat
Host:	Rabbit
Isotype:	IgG
Clonality:	Polyclonal
Immunogen:	Fusion protein of human BRE
Formulation:	pH7.4 PBS, 0.05% NaN ₃ , 40% Glycerol
Concentration:	lot specific
Purification:	Antigen affinity purification
Conjugation:	Unconjugated
Storage:	Store at -20°C as received.
Stability:	Stable for 12 months from date of receipt.
Predicted Protein Size:	44 kDa
Gene Name:	brain and reproductive organ-expressed (TNFRSF1A modulator)
Database Link:	NP_954661 Entrez Gene 107976 Mouse Entrez Gene 362704 Rat Entrez Gene 9577 Human Q9NXR7



[View online »](#)

Background:

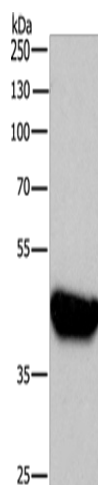
Brain and reproductive organ-expressed protein (BRE) is a 415 amino acid protein which binds to the intracellular juxtamembrane domain of the death receptor, tumor necrosis factor receptor 1 (TNF-R1). BRE also binds to the death receptor, FAS. BRE downregulates TNF α -induced activation of NF κ B and may play a role in homeostasis or cellular differentiation in cells of epithelial, neural and germ line origins. It inhibits components of the death-inducing signaling complexes that are necessary for activation of the mitochondria, thereby mediating apoptosis. BRE is strongly expressed in the adrenal cortex, medulla, testis and pancreas, and is weakly expressed in the thymus, thyroid, stomach and small intestine.

Synonyms:

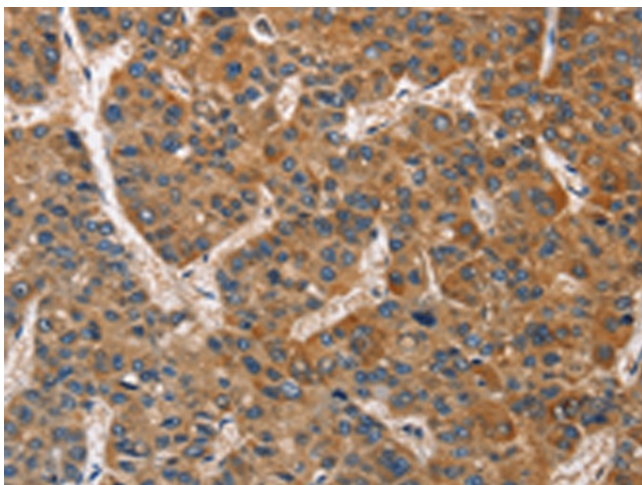
BRCC4; BRCC45

Protein Families:

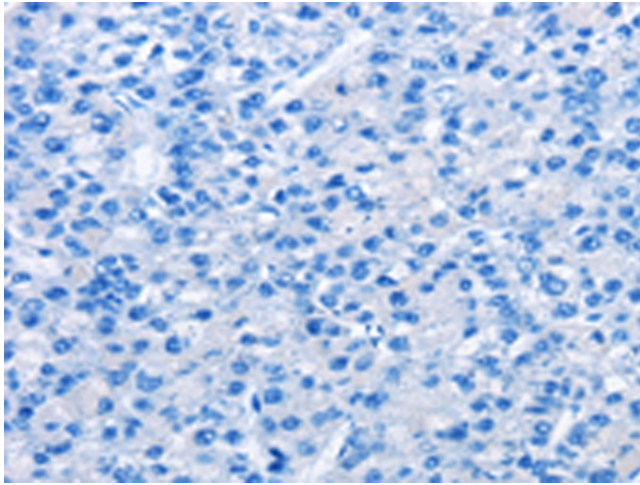
Druggable Genome

Product images:

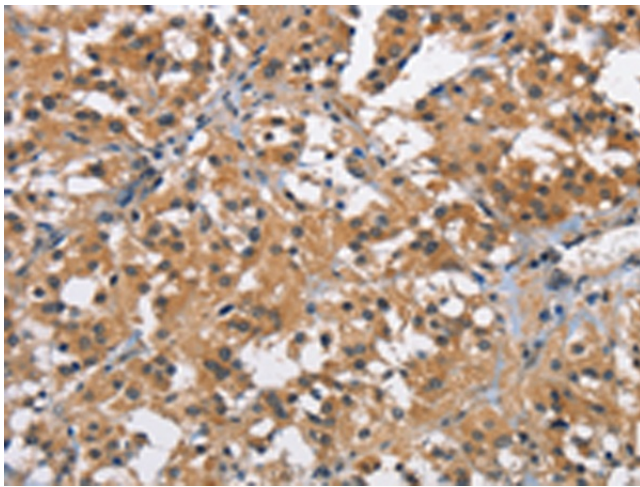
Gel: 8%SDS-PAGE
Lysate: 40 μ g
Lane: A431 cells
Primary antibody: TA349720 (BABAM2 Antibody) at dilution 1/750
Secondary antibody: Goat anti rabbit IgG at 1/8000 dilution
Exposure time: 30 seconds



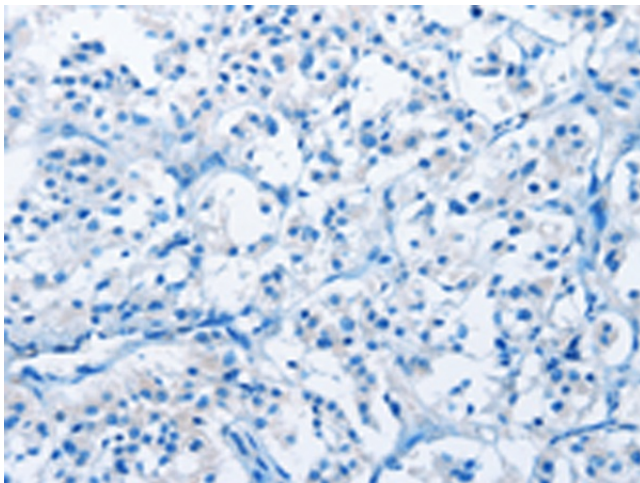
Immunohistochemistry of paraffin-embedded Human liver cancer tissue using TA349720 (BABAM2 Antibody) at dilution 1/40 (Original magnification: \times 200)



Immunohistochemistry of paraffin-embedded Human liver cancer tissue using TA349720 (BABAM2 Antibody) at dilution 1/40, treated with fusion protein. (Original magnification: ×200)



Immunohistochemistry of paraffin-embedded Human thyroid cancer tissue using TA349720 (BABAM2 Antibody) at dilution 1/40 (Original magnification: ×200)



Immunohistochemistry of paraffin-embedded Human thyroid cancer tissue using TA349720 (BABAM2 Antibody) at dilution 1/40, treated with fusion protein. (Original magnification: ×200)