

## Product datasheet for **TA349718S**

### **BMP15 Rabbit Polyclonal Antibody**

#### **Product data:**

|                         |  |
|-------------------------|--|
| Product Type:           | Primary Antibodies   |
| Applications:           | IHC, WB  |
| Recommended Dilution:   | WB: 200-1000<br>WB positive control: A549 cells<br>IHC: 50-200<br>Positive control: Human thyroid cancer<br>Predicted cell location: Cytoplasm |
| Reactivity:             | Human  |
| Host:                   | Rabbit   |
| Isotype:                | IgG  |
| Clonality:              | Polyclonal   |
| Immunogen:              | Fusion protein of human BMP15  |
| Formulation:            | pH7.4 PBS, 0.05% NaN <sub>3</sub> , 40% Glycerol   |
| Purification:           | Antigen affinity purification  |
| Conjugation:            | Unconjugated   |
| Storage:                | Store at -20°C as received.  |
| Stability:              | Stable for 12 months from date of receipt.   |
| Predicted Protein Size: | 45 kDa   |
| Gene Name:              | bone morphogenetic protein 15  |
| Database Link:          | <a href="#">NP_005439</a><br><a href="#">Entrez Gene 9210 Human</a><br><a href="#">O95972</a>  |

**Background:** The protein encoded by this gene is a member of the bone morphogenetic protein family which is part of the transforming growth factor-beta superfamily. The transforming growth factor-beta superfamily includes large families of growth and differentiation factors. It is thought that this protein may be involved in oocyte maturation and follicular development as a homodimer or by forming heterodimers with a related protein, Gdf9. Defects in this gene are the cause of ovarian dysgenesis 2.

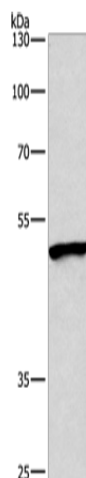


[View online »](#)

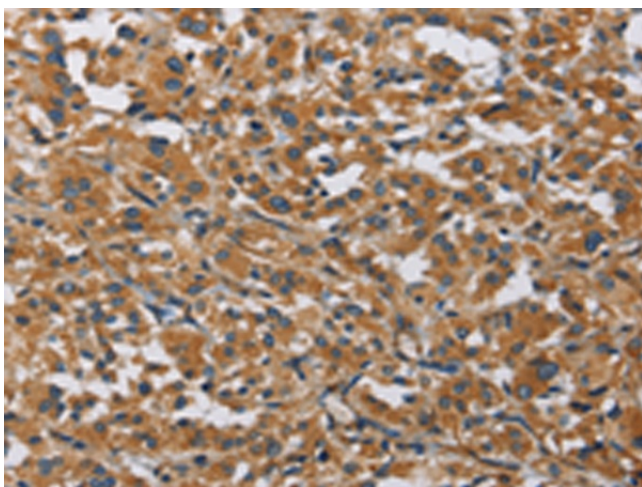
**Synonyms:** GDF9B; ODG2; POF4

**Protein Families:** Adult stem cells, Cancer stem cells, Druggable Genome, Embryonic stem cells, ES Cell Differentiation/IPS, Secreted Protein, Stem cell relevant signaling - TGFb/BMP signaling pathway

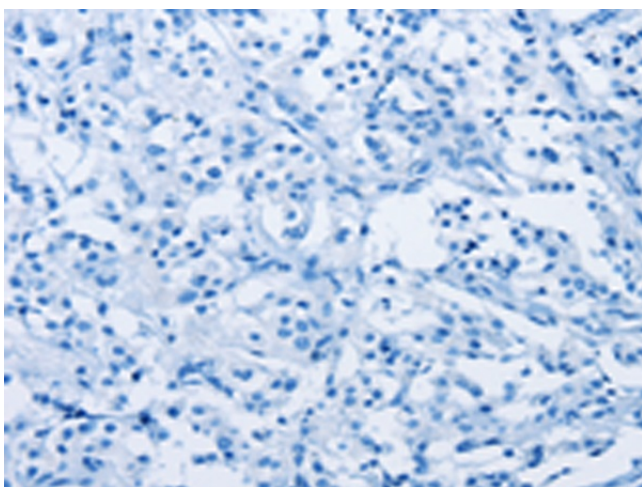
**Product images:**



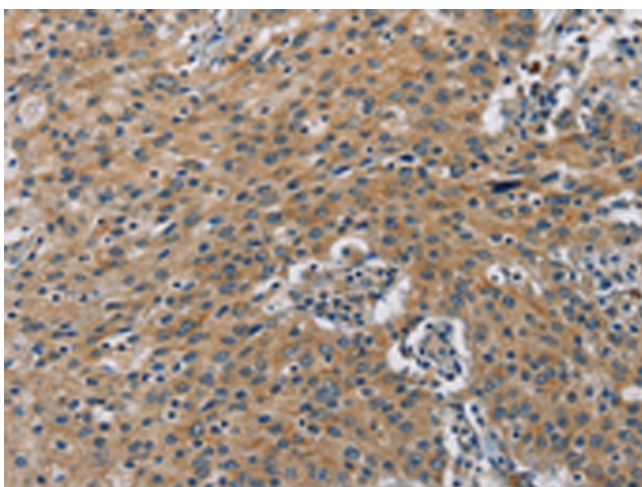
Gel: 8%SDS-PAGE  
Lysate: 40 µg  
Lane: A549 cells  
Primary antibody: [TA349718] (BMP15 Antibody) at dilution 1/400  
Secondary antibody: Goat anti rabbit IgG at 1/8000 dilution  
Exposure time: 40 seconds



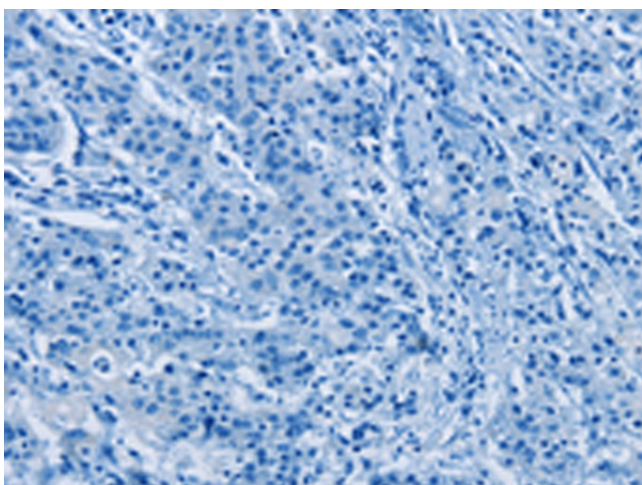
Immunohistochemistry of paraffin-embedded Human thyroid cancer tissue using [TA349718] (BMP15 Antibody) at dilution 1/40 (Original magnification: ×200)



Immunohistochemistry of paraffin-embedded Human thyroid cancer tissue using [TA349718] (BMP15 Antibody) at dilution 1/40, treated with fusion protein. (Original magnification: ×200)



Immunohistochemistry of paraffin-embedded Human gastric cancer tissue using [TA349718] (BMP15 Antibody) at dilution 1/40 (Original magnification: ×200)



Immunohistochemistry of paraffin-embedded Human gastric cancer tissue using [TA349718] (BMP15 Antibody) at dilution 1/40, treated with fusion protein. (Original magnification: ×200)