

## Product datasheet for **TA349717**

### **BMAL1 (ARNTL) Rabbit Polyclonal Antibody**

#### **Product data:**

Product Type:	Primary Antibodies
Applications:	WB
Recommended Dilution:	WB: 500-2000 WB positive control: Human fetal liver and mouse stomach tissue, hela and hepG2 cells
Reactivity:	Human, Mouse, Rat
Host:	Rabbit
Isotype:	IgG
Clonality:	Polyclonal
Immunogen:	Fusion protein of human ARNTL
Formulation:	pH7.4 PBS, 0.05% NaN <sub>3</sub> , 40% Glycerol
Concentration:	lot specific
Purification:	Antigen affinity purification
Conjugation:	Unconjugated
Storage:	Store at -20°C as received.
Stability:	Stable for 12 months from date of receipt.
Predicted Protein Size:	69 kDa
Gene Name:	aryl hydrocarbon receptor nuclear translocator like
Database Link:	<a href="#">NP_001169</a> <a href="#">Entrez Gene 11865 MouseEntrez Gene 29657 RatEntrez Gene 406 Human</a> <a href="#">O00327</a>

**Background:** The protein encoded by this gene is a basic helix-loop-helix protein that forms a heterodimer with CLOCK. This complex binds an E-box upstream of the PER1 gene, activating this gene and possibly other circadian rhythm-associated genes. Three transcript variants encoding two different isoforms have been found for this gene.

**Synonyms:** bHLHe5; BMAL1; BMAL1c; JAP3; MOP3; PASD3; TIC

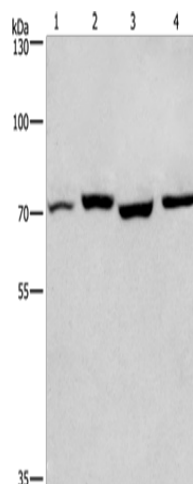
**Protein Families:** Druggable Genome, Transcription Factors

**Protein Pathways:** Circadian rhythm - mammal



[View online »](#)

## Product images:



Gel: 6%SDS-PAGE

Lysate: 40  $\mu$ g

Lane 1-4: Human fetal liver tissue

mouse stomach tissue

hela cells

hepG2 cells

Primary antibody: TA349717 (ARNTL Antibody) at dilution 1/450

Secondary antibody: Goat anti rabbit IgG at 1/8000 dilution

Exposure time: 20 seconds