

Product datasheet for **TA349712**

BIN3 Rabbit Polyclonal Antibody

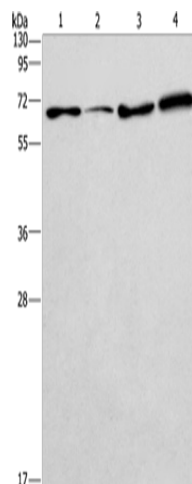
Product data:

Product Type:	Primary Antibodies
Applications:	WB
Recommended Dilution:	WB: 200-1000 WB positive control: 231, A549, LoVo and HepG2 cells
Reactivity:	Human, Mouse, Rat
Host:	Rabbit
Isotype:	IgG
Clonality:	Polyclonal
Immunogen:	Fusion protein of human BIN3
Formulation:	pH7.4 PBS, 0.05% NaN ₃ , 40% Glycerol
Concentration:	lot specific
Purification:	Antigen affinity purification
Conjugation:	Unconjugated
Storage:	Store at -20°C as received.
Stability:	Stable for 12 months from date of receipt.
Predicted Protein Size:	30 kDa
Gene Name:	bridging integrator 3
Database Link:	NP_061158 Entrez Gene 57784 Mouse Entrez Gene 361065 Rat Entrez Gene 55909 Human Q9NQY0
Background:	The product of this gene is a member of the BAR domain protein family. The encoded protein is comprised solely of a BAR domain which is predicted to form coiled-coil structures and proposed to mediate dimerization, sense and induce membrane curvature, and bind small GTPases. BAR domain proteins have been implicated in endocytosis, intracellular transport, and a diverse set of other processes
Synonyms:	MGC14978



[View online »](#)

Product images:



Gel: 12%SDS-PAGE

Lysate: 40 μ g

Lane 1-4: 231 cells

A549 cells

LoVo cells

HepG2 cells

Primary antibody: TA349712 (BIN3 Antibody) at dilution 1/225

Secondary antibody: Goat anti rabbit IgG at 1/8000 dilution

Exposure time: 2 minutes