

Product datasheet for **TA349707**

Breast cancer suppressor candidate 1 (VWA5A) Rabbit Polyclonal Antibody

Product data:

Product Type:	Primary Antibodies
Applications:	IHC, WB
Recommended Dilution:	WB: 500-2000 WB positive control: Human Adrenal pheochromocytoma tissue, Jurkat and A549 cells IHC: 100-300 Positive control: Human lung cancer Predicted cell location: Cytoplasm
Reactivity:	Human
Host:	Rabbit
Isotype:	IgG
Clonality:	Polyclonal
Immunogen:	Fusion protein of human VWA5A
Formulation:	pH7.4 PBS, 0.05% NaN ₃ , 40% Glycerol
Concentration:	lot specific
Purification:	Antigen affinity purification
Conjugation:	Unconjugated
Storage:	Store at -20°C as received.
Stability:	Stable for 12 months from date of receipt.
Predicted Protein Size:	86 kDa
Gene Name:	von Willebrand factor A domain containing 5A
Database Link:	NP_001123614 Entrez Gene 4013 Human O00534



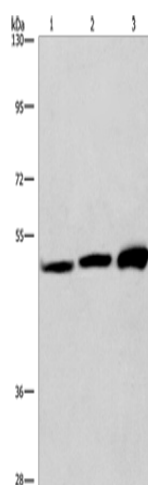
[View online »](#)

Background:

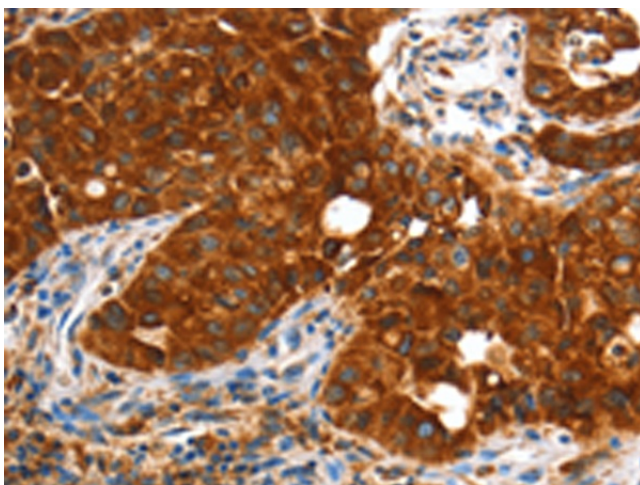
VWA5A (von Willebrand factor A domain containing 5A), also known as BCSC-1 (breast cancer suppressor candidate 1) or LOH11CR2A (loss of heterozygosity 11 chromosomal region 2 gene A protein), is a 786 amino acid protein containing one VIT domain and one VWFA domain. VWA5A is expressed at low levels in various tissues, with no expression found in 80% of tumor cell lines. Likely acting as a tumor suppressor gene, deletion of VWA5A leads to loss of heterozygosity (LOH) in breast and ovarian tumors, and may have an important role as a potential gene therapy target. Abnormal expression of VWA5A may lead to an increase in adhesion of CNE-2L2 cells associated with an increase in expression of E-cadherin, alpha-catenin, and p53, resulting in a decrease of malignant activity in cells with ectopic expression of VWA5A.

Synonyms:

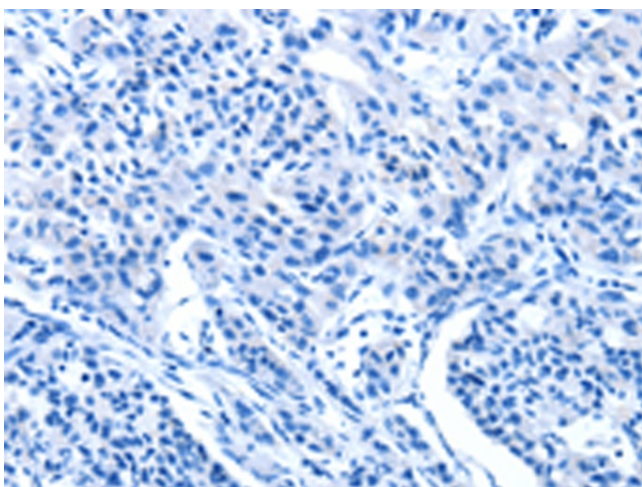
BCSC-1; BCSC1; LOH11CR2A

Product images:

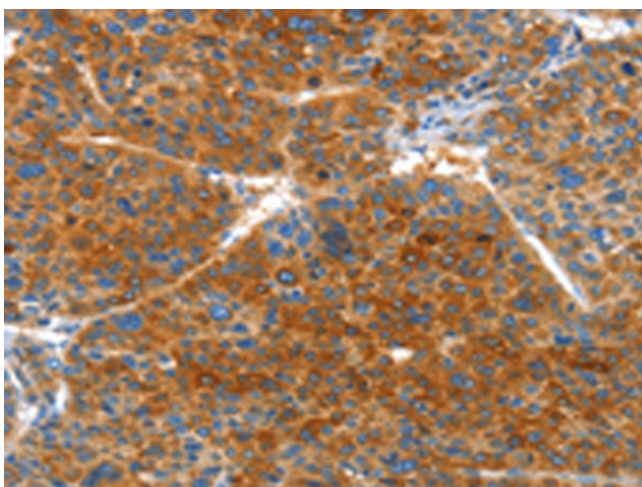
Gel: 6%SDS-PAGE
Lysate: 40 µg
Lane 1-3: Human Adrenal pheochromocytoma tissue
Jurkat cells
A549 cells
Primary antibody: TA349707 (VWA5A Antibody) at dilution 1/275
Secondary antibody: Goat anti rabbit IgG at 1/8000 dilution
Exposure time: 10 seconds



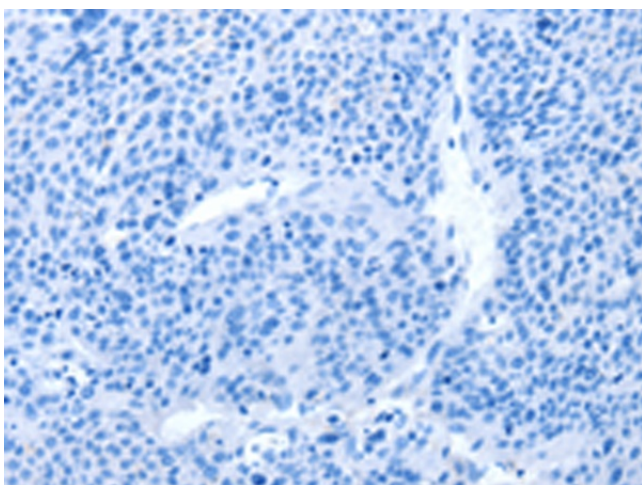
Immunohistochemistry of paraffin-embedded Human lung cancer tissue using TA349707 (VWA5A Antibody) at dilution 1/60 (Original magnification: ×200)



Immunohistochemistry of paraffin-embedded Human lung cancer tissue using TA349707 (VWA5A Antibody) at dilution 1/60, treated with fusion protein. (Original magnification: $\times 200$)



Immunohistochemistry of paraffin-embedded Human liver cancer tissue using TA349707 (VWA5A Antibody) at dilution 1/60 (Original magnification: $\times 200$)



Immunohistochemistry of paraffin-embedded Human liver cancer tissue using TA349707 (VWA5A Antibody) at dilution 1/60, treated with fusion protein. (Original magnification: $\times 200$)