

Product datasheet for **TA349704**

BCAT1 Rabbit Polyclonal Antibody

Product data:

Product Type:	Primary Antibodies
Applications:	IHC, WB
Recommended Dilution:	ELISA: 2000-5000, WB: 200-1000, IHC: 25-100
Reactivity:	Human, Mouse
Host:	Rabbit
Isotype:	IgG
Clonality:	Polyclonal
Immunogen:	Fusion protein of human BCAT1
Formulation:	pH7.4 PBS, 0.05% NaN ₃ , 40% Glycerol
Concentration:	lot specific
Purification:	Antigen affinity purification
Conjugation:	Unconjugated
Storage:	Store at -20°C as received.
Stability:	Stable for 12 months from date of receipt.
Predicted Protein Size:	43 kDa
Gene Name:	branched chain amino acid transaminase 1
Database Link:	NP_005495 Entrez Gene 12035 Mouse Entrez Gene 586 Human P54687

Background: This gene encodes the cytosolic form of the enzyme branched-chain amino acid transaminase. This enzyme catalyzes the reversible transamination of branched-chain alpha-keto acids to branched-chain L-amino acids essential for cell growth. Two different clinical disorders have been attributed to a defect of branched-chain amino acid transamination: hypervalinemia and hyperleucine-isoleucinemia. As there is also a gene encoding a mitochondrial form of this enzyme, mutations in either gene may contribute to these disorders. Alternatively spliced transcript variants have been described.

Synonyms: BCATC; BCT1; ECA39; MECA39; PNAS121; PP18



[View online »](#)

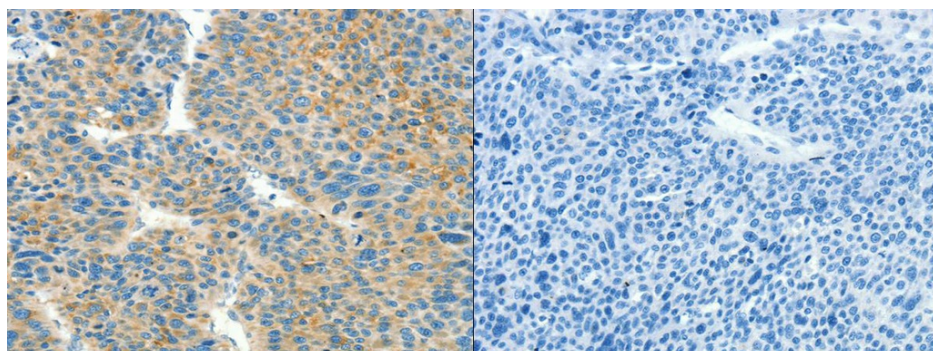
Protein Families: Druggable Genome

Protein Pathways: Metabolic pathways, Pantothenate and CoA biosynthesis, Valine, leucine and isoleucine biosynthesis, Valine, leucine and isoleucine degradation

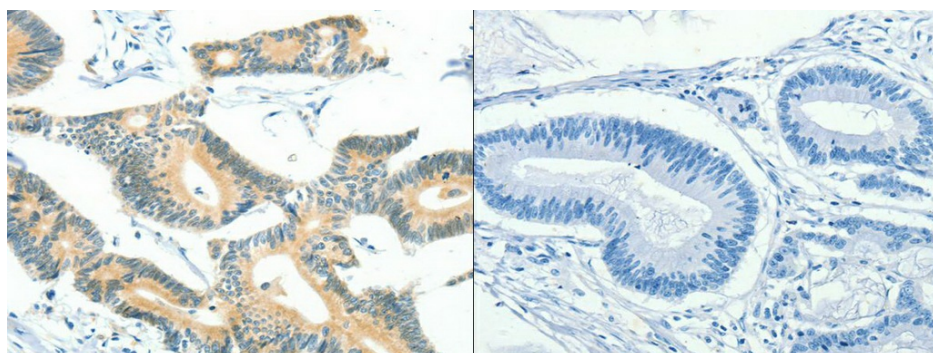
Product images:



Gel: 12%SDS-PAGE, Lysate: 40 ug, Lane: Raji cells, Primary antibody: (BCAT1 Antibody) at dilution 1/250, Secondary antibody: Goat anti rabbit IgG at 1/8000 dilution, Exposure time: 5 seconds



The image on the left is immunohistochemistry of paraffin-embedded Human liver cancer tissue using (BCAT1 Antibody) at dilution 1/50, on the right is treated with fusion protein. (Original magnification: $\times 200$)



The image on the left is immunohistochemistry of paraffin-embedded Human colon cancer tissue using (BCAT1 Antibody) at dilution 1/50, on the right is treated with fusion protein. (Original magnification: $\times 200$)