

## Product datasheet for **TA349703**

### BCAS2 Rabbit Polyclonal Antibody

#### Product data:

Product Type:	Primary Antibodies
Applications:	IHC, WB
Recommended Dilution:	WB: 200-1000 WB positive control: A172 and 231 cells IHC: 50-200 Positive control: Human colon cancer Predicted cell location: Nucleus
Reactivity:	Human, Mouse
Host:	Rabbit
Isotype:	IgG
Clonality:	Polyclonal
Immunogen:	Fusion protein of human BCAS2
Formulation:	pH7.4 PBS, 0.05% NaN <sub>3</sub> , 40% Glycerol
Concentration:	lot specific
Purification:	Antigen affinity purification
Conjugation:	Unconjugated
Storage:	Store at -20°C as received.
Stability:	Stable for 12 months from date of receipt.
Predicted Protein Size:	26 kDa
Gene Name:	breast carcinoma amplified sequence 2
Database Link:	<a href="#">NP_005863</a> <a href="#">Entrez Gene 68183 Mouse</a> <a href="#">Entrez Gene 10286 Human</a> <a href="#">O75934</a>



[View online »](#)

**Background:**

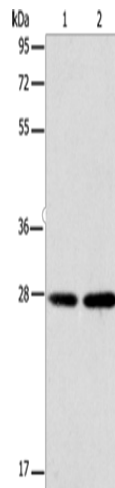
BCAS2 (breast carcinoma amplified sequence 2), also designated DAM1 (DNA amplified in mammary carcinoma 1 protein) or spliceosome-associated SPF 27, is a ubiquitously expressed nuclear protein that was originally identified as being overexpressed in various breast cancer cell lines. BCAS2 is now known to be a component of the spliceosome, participating in the removal of introns from mRNA precursors. BCAS2 specifically interacts (in a ligand-independent manner) with TR $\beta$  (thyroid hormone receptor beta), ER $\alpha$  (estrogen receptor alpha), ER $\beta$ , PR (progesterone receptor), and PPAR $\gamma$  (Peroxisome proliferator-activated receptor gamma). BCAS2 functions as an ER coactivator and is capable of enhancing ER-mediated transcription. This suggests that BCAS2 is involved in the development of breast cancer.

**Synonyms:**

DAM1; Snt309; SPF27

**Protein Pathways:**

Spliceosome

**Product images:**

Gel: 12%SDS-PAGE

Lysate: 40  $\mu$ g

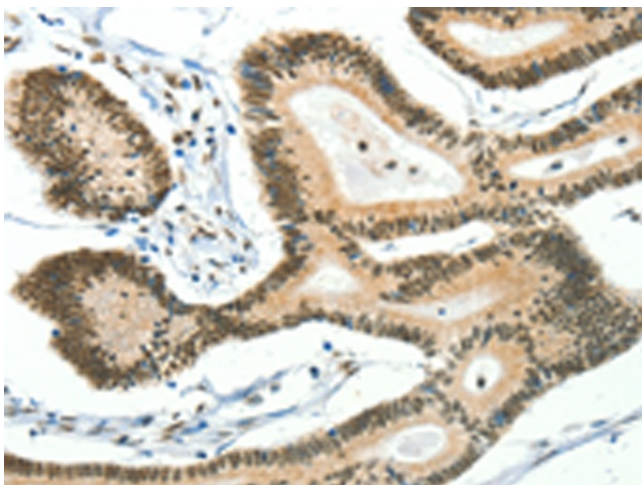
Lane 1-2: A172 cells

231 cells

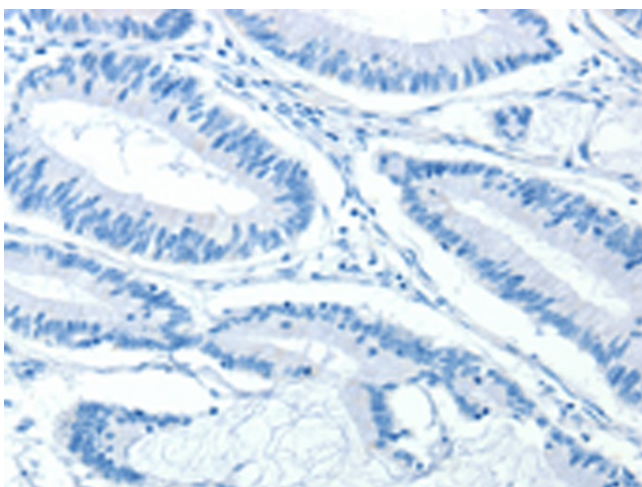
Primary antibody: TA349703 (BCAS2 Antibody) at dilution 1/250

Secondary antibody: Goat anti rabbit IgG at 1/8000 dilution

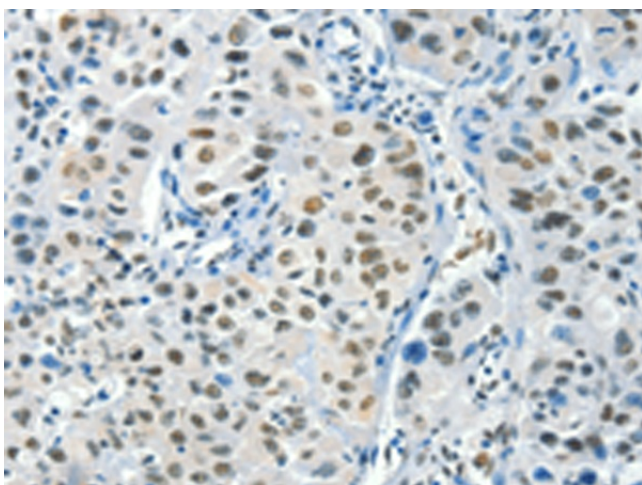
Exposure time: 20 seconds



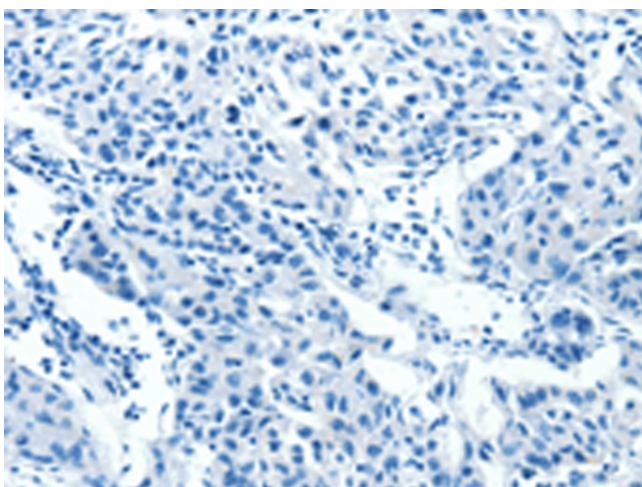
Immunohistochemistry of paraffin-embedded Human colon cancer tissue using TA349703 (BCAS2 Antibody) at dilution 1/50 (Original magnification:  $\times 200$ )



Immunohistochemistry of paraffin-embedded Human colon cancer tissue using TA349703 (BCAS2 Antibody) at dilution 1/50, treated with fusion protein. (Original magnification:  $\times 200$ )



Immunohistochemistry of paraffin-embedded Human lung cancer tissue using TA349703 (BCAS2 Antibody) at dilution 1/50 (Original magnification:  $\times 200$ )



Immunohistochemistry of paraffin-embedded Human lung cancer tissue using TA349703 (BCAS2 Antibody) at dilution 1/50, treated with fusion protein. (Original magnification:  $\times 200$ )