

## Product datasheet for **TA349702S**

### **BAP31 (BCAP31) Rabbit Polyclonal Antibody**

#### **Product data:**

Product Type:	Primary Antibodies
Applications:	IHC, WB
Recommended Dilution:	WB: 500-2000 WB positive control: Human placenta tissue and A549 cells, Raji and hela cells IHC: 50-200 Positive control: Human gastric cancer Predicted cell location: Cytoplasm
Reactivity:	Human, Mouse
Host:	Rabbit
Isotype:	IgG
Clonality:	Polyclonal
Immunogen:	Fusion protein of human BCAP31
Formulation:	pH7.4 PBS, 0.05% NaN <sub>3</sub> , 40% Glycerol
Purification:	Antigen affinity purification
Conjugation:	Unconjugated
Storage:	Store at -20°C as received.
Stability:	Stable for 12 months from date of receipt.
Predicted Protein Size:	28 kDa
Gene Name:	B-cell receptor-associated protein 31
Database Link:	<a href="#">NP_005736</a> <a href="#">Entrez Gene 27061 Mouse</a> <a href="#">Entrez Gene 10134 Human</a> <a href="#">P51572</a>



[View online »](#)

**Background:**

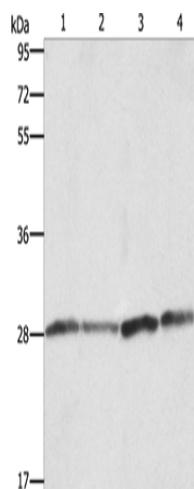
This gene encodes a member of the B-cell receptor associated protein 31 superfamily. The encoded protein is a multi-pass transmembrane protein of the endoplasmic reticulum that is involved in the anterograde transport of membrane proteins from the endoplasmic reticulum to the Golgi and in caspase 8-mediated apoptosis. Microdeletions in this gene are associated with contiguous ABCD1/DXS1375E deletion syndrome (CADD5), a neonatal disorder. Alternative splicing of this gene results in multiple transcript variants. Two related pseudogenes have been identified on chromosome 16.

**Synonyms:**

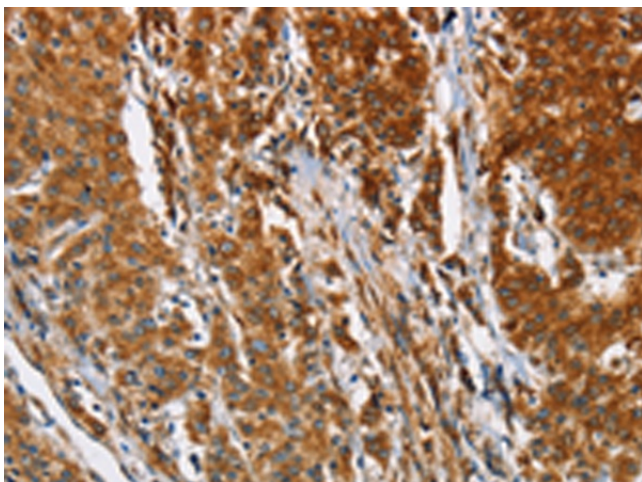
6C6-AG; BAP31; CDM; DDCH; DXS1357E

**Protein Families:**

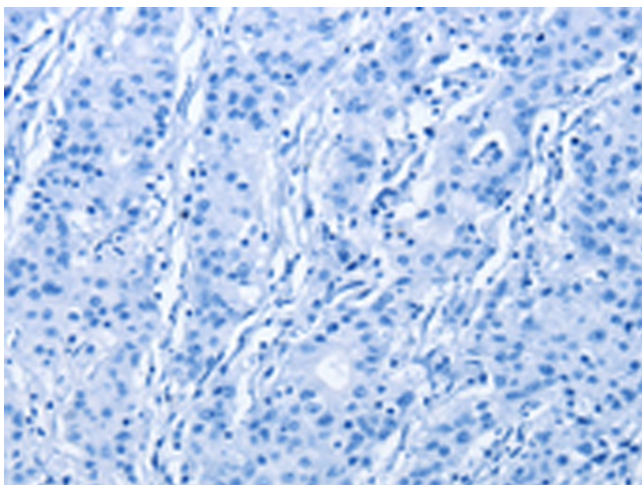
Druggable Genome, Transmembrane

**Product images:**


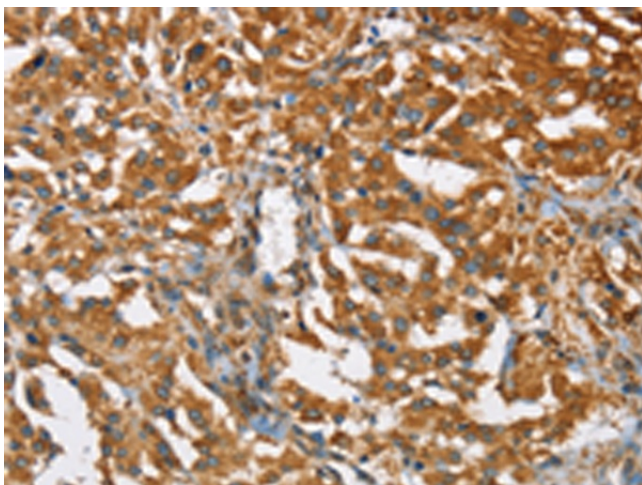
Gel: 10%SDS-PAGE  
 Lysate: 40 µg  
 Lane 1-4: Human placenta tissue  
 A549 cells  
 Raji cells  
 HeLa cells  
 Primary antibody: [TA349702] (BCAP31 Antibody)  
 at dilution 1/750  
 Secondary antibody: Goat anti rabbit IgG at  
 1/8000 dilution  
 Exposure time: 1 second



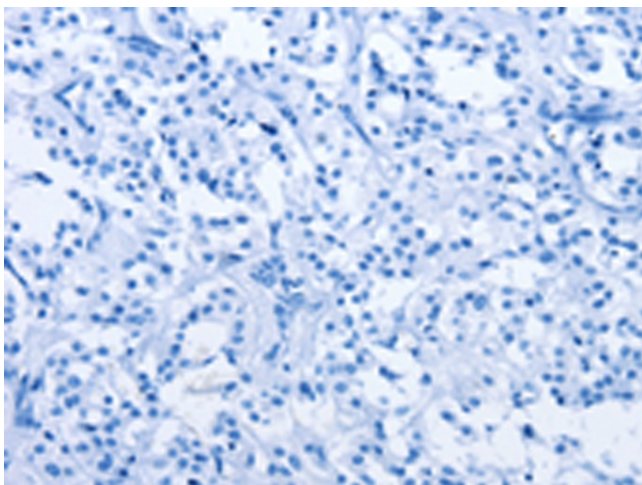
Immunohistochemistry of paraffin-embedded  
 Human gastric cancer tissue using [TA349702]  
 (BCAP31 Antibody) at dilution 1/30 (Original  
 magnification: x200)



Immunohistochemistry of paraffin-embedded Human gastric cancer tissue using [TA349702] (BCAP31 Antibody) at dilution 1/30, treated with fusion protein. (Original magnification:  $\times 200$ )



Immunohistochemistry of paraffin-embedded Human thyroid cancer tissue using [TA349702] (BCAP31 Antibody) at dilution 1/30 (Original magnification:  $\times 200$ )



Immunohistochemistry of paraffin-embedded Human thyroid cancer tissue using [TA349702] (BCAP31 Antibody) at dilution 1/30, treated with fusion protein. (Original magnification:  $\times 200$ )