

Product datasheet for **TA349690**

Aspartate Aminotransferase (GOT1) Rabbit Polyclonal Antibody

Product data:

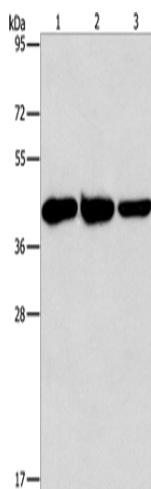
Product Type:	Primary Antibodies
Applications:	IHC, WB
Recommended Dilution:	WB: 1000-5000 WB positive control: Human normal liver tissue, mouse brain and heart tissue IHC: 50-200 Positive control: Human thyroid cancer Predicted cell location: Cytoplasm
Reactivity:	Human, Mouse, Rat
Host:	Rabbit
Isotype:	IgG
Clonality:	Polyclonal
Immunogen:	Fusion protein of human GOT1
Formulation:	pH7.4 PBS, 0.05% NaN ₃ , 40% Glycerol
Concentration:	lot specific
Purification:	Antigen affinity purification
Conjugation:	Unconjugated
Storage:	Store at -20°C as received.
Stability:	Stable for 12 months from date of receipt.
Predicted Protein Size:	46 kDa
Gene Name:	glutamic-oxaloacetic transaminase 1
Database Link:	NP_002070 Entrez Gene 14718 Mouse Entrez Gene 24401 Rat Entrez Gene 2805 Human P17174
Background:	Glutamic-oxaloacetic transaminase is a pyridoxal phosphate-dependent enzyme which exists in cytoplasmic and mitochondrial forms, GOT1 and GOT2, respectively. GOT plays a role in amino acid metabolism and the urea and tricarboxylic acid cycles. The two enzymes are homodimeric and show close homology.
Synonyms:	ASTQTL1; cAspAT; cCAT; GIG18



[View online »](#)

Protein Pathways:

Alanine, aspartate and glutamate metabolism, Arginine and proline metabolism, Cysteine and methionine metabolism, Metabolic pathways, Phenylalanine, tyrosine and tryptophan biosynthesis, Phenylalanine metabolism, Tyrosine metabolism

Product images:

Gel: 15%SDS-PAGE

Lysate: 40 µg

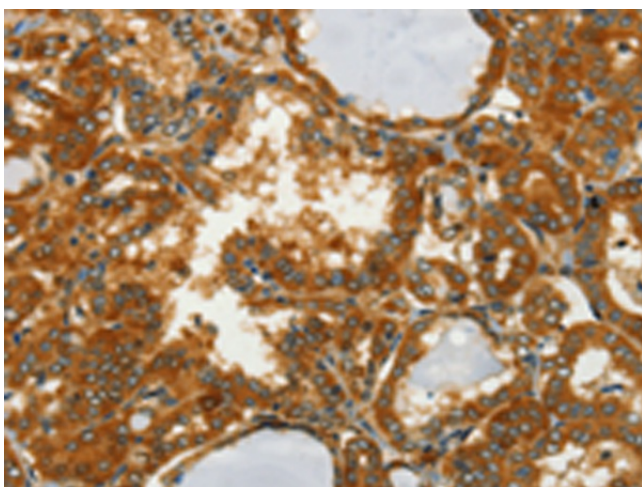
Lane 1-3: Human normal liver tissue
mouse brain tissue

Mouse heart tissue

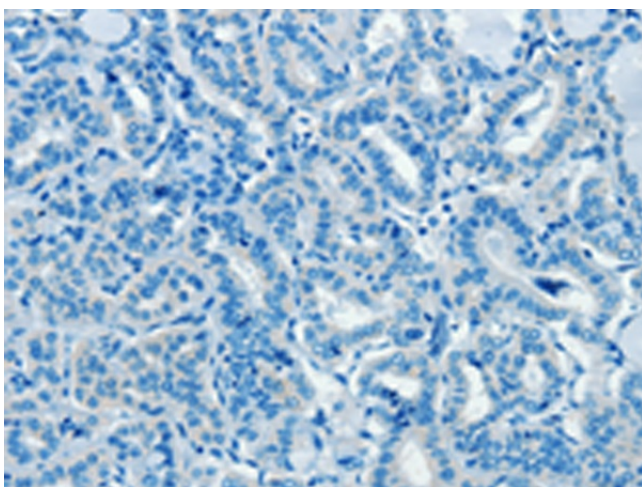
Primary antibody: TA349690 (GOT1 Antibody) at
dilution 1/1600

Secondary antibody: Goat anti rabbit IgG at
1/8000 dilution

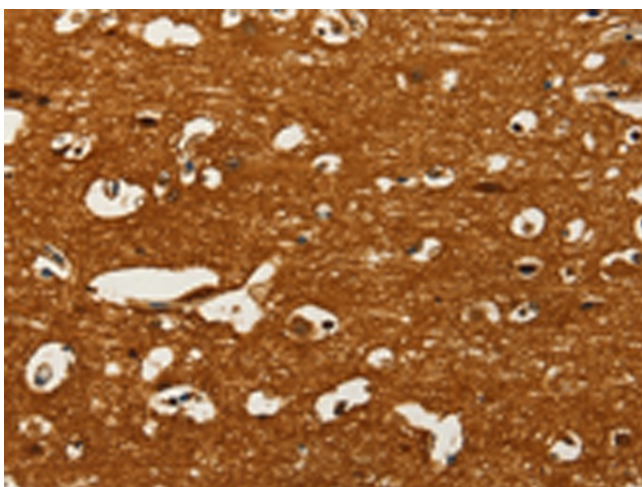
Exposure time: 5 seconds



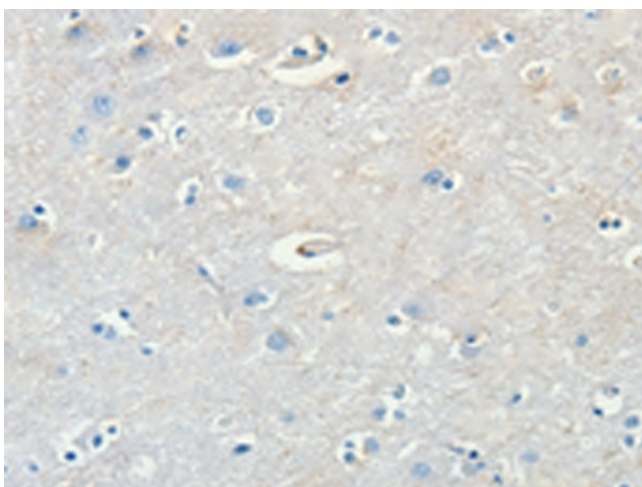
Immunohistochemistry of paraffin-embedded
Human thyroid cancer tissue using TA349690
(GOT1 Antibody) at dilution 1/50 (Original
magnification: ×200)



Immunohistochemistry of paraffin-embedded Human thyroid cancer tissue using TA349690 (GOT1 Antibody) at dilution 1/50, treated with fusion protein. (Original magnification: $\times 200$)



Immunohistochemistry of paraffin-embedded Human brain tissue using TA349690 (GOT1 Antibody) at dilution 1/50 (Original magnification: $\times 200$)



Immunohistochemistry of paraffin-embedded Human brain tissue using TA349690 (GOT1 Antibody) at dilution 1/50, treated with fusion protein. (Original magnification: $\times 200$)