

Product datasheet for **TA349689**

ASB10 Rabbit Polyclonal Antibody

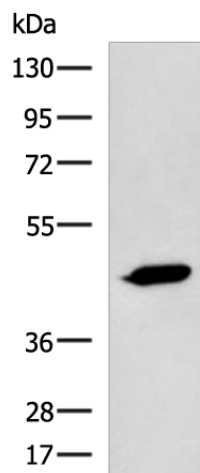
Product data:

Product Type:	Primary Antibodies
Applications:	WB
Recommended Dilution:	WB: 1000-5000 WB positive control: A431 cell lysate
Reactivity:	Human, Mouse
Host:	Rabbit
Isotype:	IgG
Clonality:	Polyclonal
Immunogen:	Fusion protein of human ASB10
Formulation:	pH7.4 PBS, 0.05% NaN ₃ , 40% Glycerol
Concentration:	lot specific
Purification:	Antigen affinity purification
Conjugation:	Unconjugated
Storage:	Store at -20°C as received.
Stability:	Stable for 12 months from date of receipt.
Predicted Protein Size:	51 kDa
Gene Name:	ankyrin repeat and SOCS box containing 10
Database Link:	NP_543147 Entrez Gene 136371 Human Q8WXI3
Background:	The protein encoded by this gene is a member of the ankyrin repeat and SOCS box-containing (ASB) family of proteins. The SOCS box serves to couple suppressor of cytokine signaling (SOCS) proteins and their binding partners with the elongin B and C complex, possibly targeting them for degradation. Multiple alternatively spliced transcript variants have been described for this gene.
Synonyms:	GLC1F
Protein Families:	Druggable Genome



[View online »](#)

Product images:



Gel: 8%SDS-PAGE
Lysate: 40 μ g
Lane: A431 cell lysate
Primary antibody: TA349689 (ASB10 Antibody) at dilution 1/800
Secondary antibody: Goat anti rabbit IgG at 1/5000 dilution
Exposure time: 10 seconds