

Product datasheet for **TA349686**

ARMCX2 Rabbit Polyclonal Antibody

Product data:

Product Type:	Primary Antibodies
Applications:	IHC, WB
Recommended Dilution:	WB: 500-2000 WB positive control: Mouse testis tissue IHC: 50-200 Positive control: Human liver cancer Predicted cell location: Cytoplasm
Reactivity:	Human, Mouse
Host:	Rabbit
Isotype:	IgG
Clonality:	Polyclonal
Immunogen:	Fusion protein of human ARMCX2
Formulation:	pH7.4 PBS, 0.05% NaN ₃ , 40% Glycerol
Concentration:	lot specific
Purification:	Antigen affinity purification
Conjugation:	Unconjugated
Storage:	Store at -20°C as received.
Stability:	Stable for 12 months from date of receipt.
Predicted Protein Size:	66 kDa
Gene Name:	armadillo repeat containing, X-linked 2
Database Link:	NP_055597 Entrez Gene 67416 Mouse Entrez Gene 9823 Human Q7L311



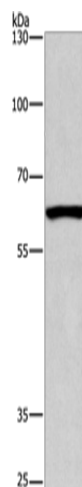
[View online »](#)

Background: This gene encodes a protein containing a potential N-terminal transmembrane domain and multiple armadillo (arm) repeats. Proteins containing arm repeats are involved in development, maintenance of tissue integrity, and tumorigenesis. This gene is located in a cluster of related genes on chromosome X. There is a pseudogene for this gene on chromosome 7. Alternative splicing in the 5' UTR results in multiple transcript variants encoding the same protein.

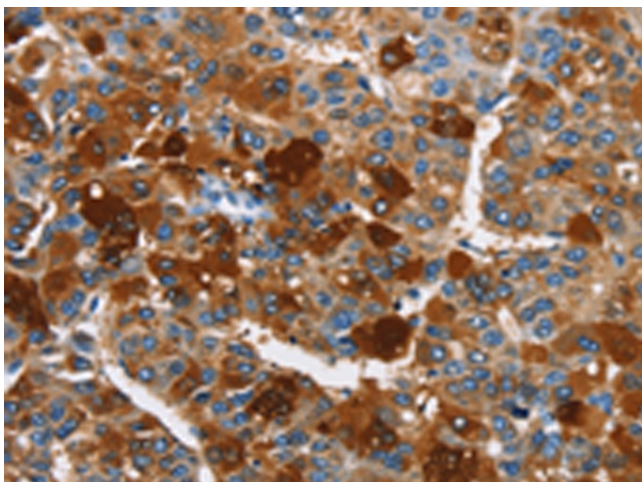
Synonyms: ALEX2; GASP9

Protein Families: Transmembrane

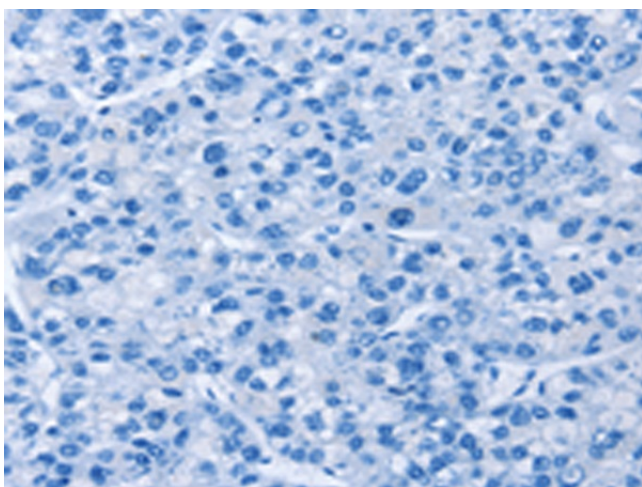
Product images:



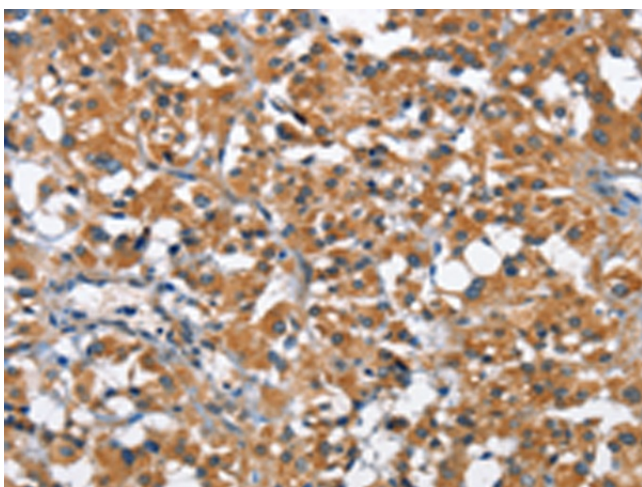
Gel: 6%SDS-PAGE
Lysate: 40 μ g
Lane: Mouse testis tissue
Primary antibody: TA349686 (ARM CX2 Antibody) at dilution 1/425
Secondary antibody: Goat anti rabbit IgG at 1/8000 dilution
Exposure time: 40 seconds



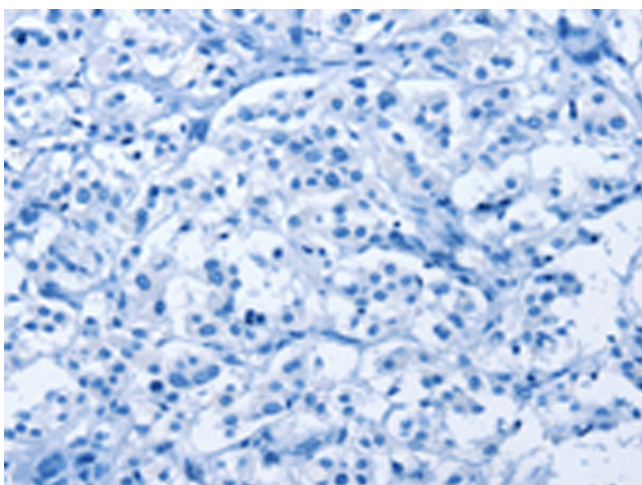
Immunohistochemistry of paraffin-embedded Human liver cancer tissue using TA349686 (ARM CX2 Antibody) at dilution 1/40 (Original magnification: \times 200)



Immunohistochemistry of paraffin-embedded Human liver cancer tissue using TA349686 (ARMCX2 Antibody) at dilution 1/40, treated with fusion protein. (Original magnification: $\times 200$)



Immunohistochemistry of paraffin-embedded Human thyroid cancer tissue using TA349686 (ARMCX2 Antibody) at dilution 1/40 (Original magnification: $\times 200$)



Immunohistochemistry of paraffin-embedded Human thyroid cancer tissue using TA349686 (ARMCX2 Antibody) at dilution 1/40, treated with fusion protein. (Original magnification: $\times 200$)