

Product datasheet for **TA349681**

Pancreatic alpha amylase (AMY2A) Rabbit Polyclonal Antibody

Product data:

Product Type:	Primary Antibodies
Applications:	IHC, WB
Recommended Dilution:	WB: 1000-5000 WB positive control: Mouse pancreas tissue IHC: 50-200 Positive control: Human Lymphoma Predicted cell location: Cytoplasm
Reactivity:	Human, Mouse
Host:	Rabbit
Isotype:	IgG
Clonality:	Polyclonal
Immunogen:	Fusion protein of human AMY2A
Formulation:	pH7.4 PBS, 0.05% NaN ₃ , 40% Glycerol
Concentration:	lot specific
Purification:	Antigen affinity purification
Conjugation:	Unconjugated
Storage:	Store at -20°C as received.
Stability:	Stable for 12 months from date of receipt.
Predicted Protein Size:	58 kDa
Gene Name:	amylase, alpha 2A (pancreatic)
Database Link:	NP_000690 Entrez Gene 279 Human P04746
Background:	Amylases are secreted proteins that hydrolyze 1,4-alpha-glucoside bonds in oligosaccharides and polysaccharides, and thus catalyze the first step in digestion of dietary starch and glycogen. The human genome has a cluster of several amylase genes that are expressed at high levels in either salivary gland or pancreas. This gene encodes an amylase isoenzyme produced by the pancreas.



[View online »](#)

Synonyms: AMY2; PA

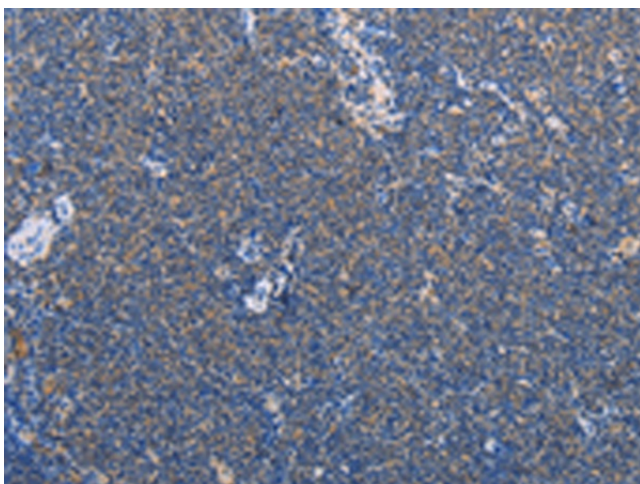
Protein Families: Secreted Protein

Protein Pathways: Metabolic pathways, Starch and sucrose metabolism

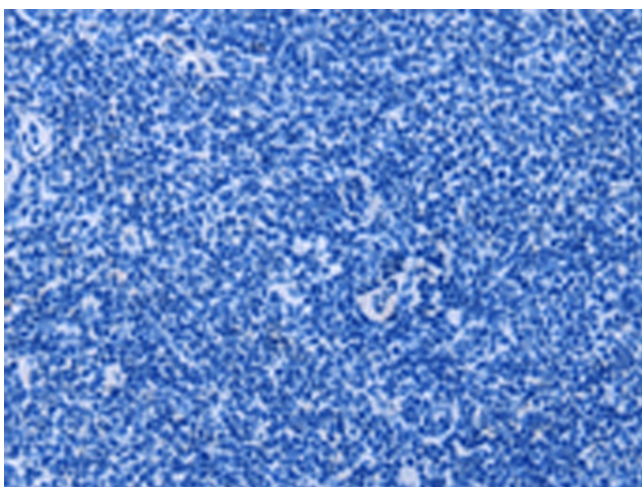
Product images:



Gel: 15%SDS-PAGE
Lysate: 40 µg
Lane: Mouse pancreas tissue
Primary antibody: TA349681 (AMY2A Antibody) at dilution 1/1550
Secondary antibody: Goat anti rabbit IgG at 1/8000 dilution
Exposure time: 1 second



Immunohistochemistry of paraffin-embedded Human Lymphoma tissue using TA349681 (AMY2A Antibody) at dilution 1/60 (Original magnification: ×200)



Immunohistochemistry of paraffin-embedded Human Lymphoma tissue using TA349681 (AMY2A Antibody) at dilution 1/60, treated with fusion protein. (Original magnification: ×200)