

## Product datasheet for **TA349680**

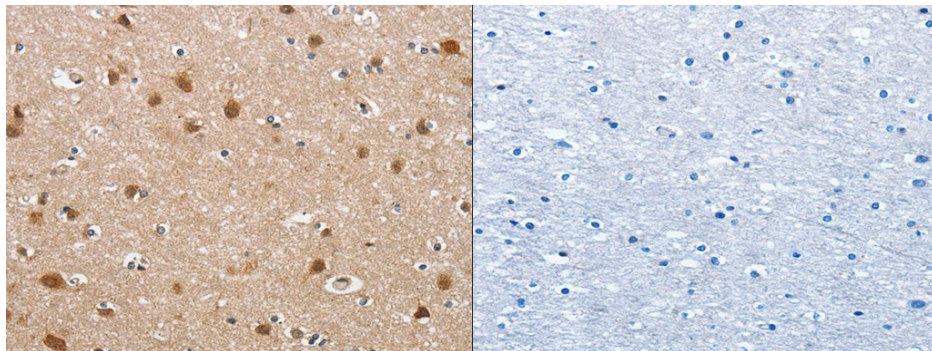
### DEFA6 Rabbit Polyclonal Antibody

#### Product data:

Product Type:	Primary Antibodies
Applications:	IHC
Recommended Dilution:	ELISA: 2000-5000, IHC: 50-200
Reactivity:	Human
Host:	Rabbit
Isotype:	IgG
Clonality:	Polyclonal
Immunogen:	Fusion protein of human DEFA6
Formulation:	pH7.4 PBS, 0.05% NaN <sub>3</sub> , 40% Glycerol
Concentration:	lot specific
Purification:	Antigen affinity purification
Conjugation:	Unconjugated
Storage:	Store at -20°C as received.
Stability:	Stable for 12 months from date of receipt.
Gene Name:	defensin alpha 6
Database Link:	<a href="#">NP_001917</a> <a href="#">Entrez Gene 1671 Human</a> <a href="#">Q01524</a>
Background:	Defensins are a family of microbicidal and cytotoxic peptides thought to be involved in host defense. They are abundant in the granules of neutrophils and also found in the epithelia of mucosal surfaces such as those of the intestine, respiratory tract, urinary tract, and vagina. Members of the defensin family are highly similar in protein sequence and distinguished by a conserved cysteine motif. Several alpha defensin genes appear to be clustered on chromosome 8.
Synonyms:	DEF6; HD-6
Protein Families:	Secreted Protein



[View online »](#)

**Product images:**

The image on the left is immunohistochemistry of paraffin-embedded Human brain tissue using (DEFA6 Antibody) at dilution 1/40, on the right is treated with fusion protein. (Original magnification:  $\times 200$ )