

Product datasheet for **TA349676**

AIM2 Rabbit Polyclonal Antibody

Product data:

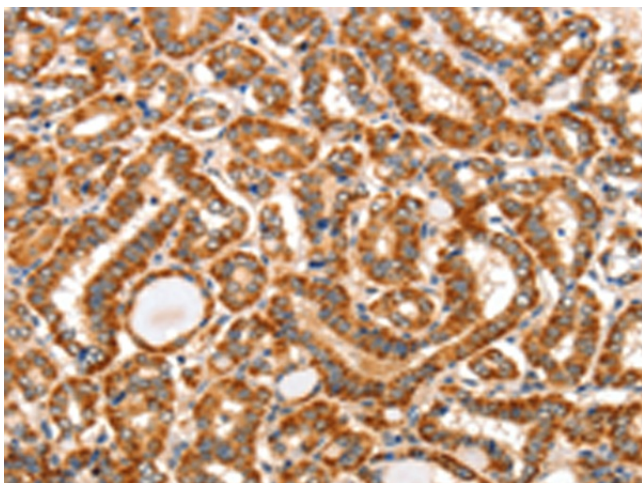
Product Type:	Primary Antibodies
Applications:	IHC
Recommended Dilution:	IHC: 50-200 Positive control: Human thyroid cancer Predicted cell location: Cytoplasm
Reactivity:	Human
Host:	Rabbit
Isotype:	IgG
Clonality:	Polyclonal
Immunogen:	Fusion protein of human AIM2
Formulation:	pH7.4 PBS, 0.05% NaN ₃ , 40% Glycerol
Concentration:	lot specific
Purification:	Antigen affinity purification
Conjugation:	Unconjugated
Storage:	Store at -20°C as received.
Stability:	Stable for 12 months from date of receipt.
Gene Name:	absent in melanoma 2
Database Link:	NP_004824 Entrez Gene 9447 Human O14862
Background:	Interferon-inducible protein AIM2 (Absent in melanoma 2) is a 343 amino acid protein belonging to the HIN-200 family. Induced by IFN- γ , AIM2 is thought to act as a tumor suppressor by repressing NF κ B transcriptional activity. Localized to the nucleus, AIM2 contains one DAPIN domain and one HIN-200 domain. The DAPIN domain is composed mostly of α -helixes and is a protein-protein interaction domain capable of binding other DAPIN domains. The HIN-200 domain has been shown to bind directly to DNA, which, along with the binding of another protein ASC, results in the activation of Caspase-1.
Synonyms:	PYHIN4



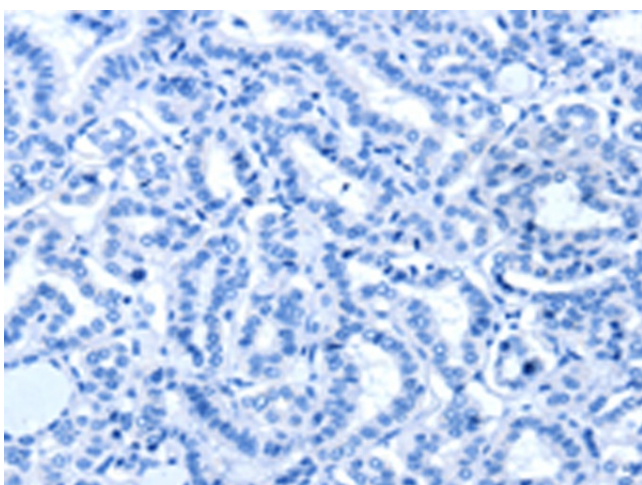
[View online »](#)

Protein Pathways: Cytosolic DNA-sensing pathway

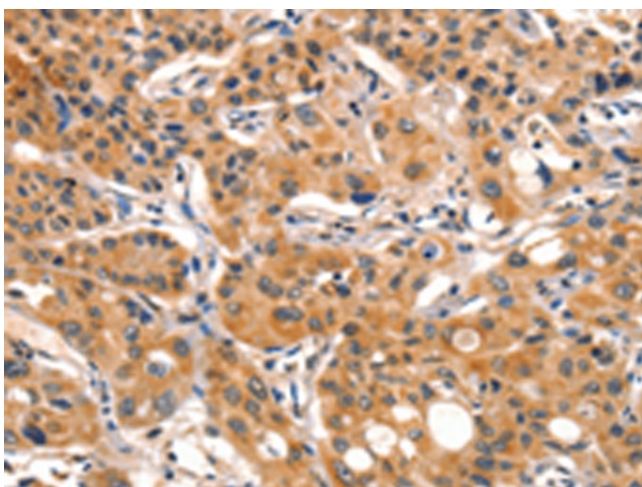
Product images:



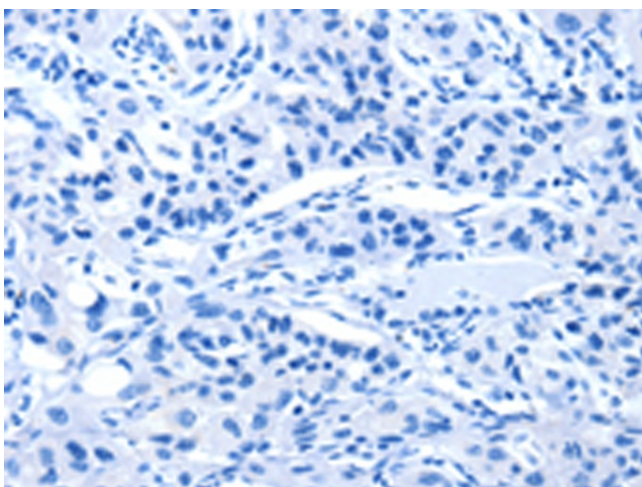
Immunohistochemistry of paraffin-embedded Human thyroid cancer tissue using TA349676 (AIM2 Antibody) at dilution 1/60 (Original magnification: $\times 200$)



Immunohistochemistry of paraffin-embedded Human thyroid cancer tissue using TA349676 (AIM2 Antibody) at dilution 1/60, treated with fusion protein. (Original magnification: $\times 200$)



Immunohistochemistry of paraffin-embedded Human lung cancer tissue using TA349676 (AIM2 Antibody) at dilution 1/60 (Original magnification: ×200)



Immunohistochemistry of paraffin-embedded Human lung cancer tissue using TA349676 (AIM2 Antibody) at dilution 1/60, treated with fusion protein. (Original magnification: ×200)