

Product datasheet for **TA349675**

AIFM3 Rabbit Polyclonal Antibody

Product data:

Product Type:	Primary Antibodies
Applications:	IHC, WB
Recommended Dilution:	WB: 200-1000 WB positive control: Hela cells IHC: 50-200 Positive control: Human cervical cancer Predicted cell location: Cytoplasm
Reactivity:	Human, Mouse
Host:	Rabbit
Isotype:	IgG
Clonality:	Polyclonal
Immunogen:	Fusion protein of human AIFM3
Formulation:	pH7.4 PBS, 0.05% NaN ₃ , 40% Glycerol
Concentration:	lot specific
Purification:	Antigen affinity purification
Conjugation:	Unconjugated
Storage:	Store at -20°C as received.
Stability:	Stable for 12 months from date of receipt.
Predicted Protein Size:	67 kDa
Gene Name:	apoptosis inducing factor, mitochondria associated 3
Database Link:	NP_653305 Entrez Gene 72168 Mouse Entrez Gene 150209 Human Q96NN9



[View online »](#)

Background:

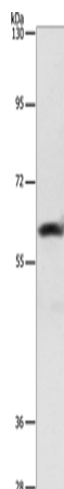
AIFL (apoptosis-inducing factor-like), also known as AIFM3 (apoptosis-inducing factor, mitochondrion-associated, 3), is a 605 amino acid protein that localizes to the mitochondrion and contains one rieske domain. Expressed ubiquitously in tissues including liver, thymus, ovary, bone marrow and cerebral cortex, AIFL functions to induce apoptosis, specifically through a caspase-dependent pathway, and may also play a role in the modulation of mitochondrial membrane potential. Multiple isoforms of AIFL exist due to alternative splicing events. The gene encoding AIFL maps to human chromosome 22, which houses over 500 genes and is the second smallest human chromosome.

Synonyms:

AIFL

Protein Families:

Druggable Genome

Product images:

Gel: 10%SDS-PAGE

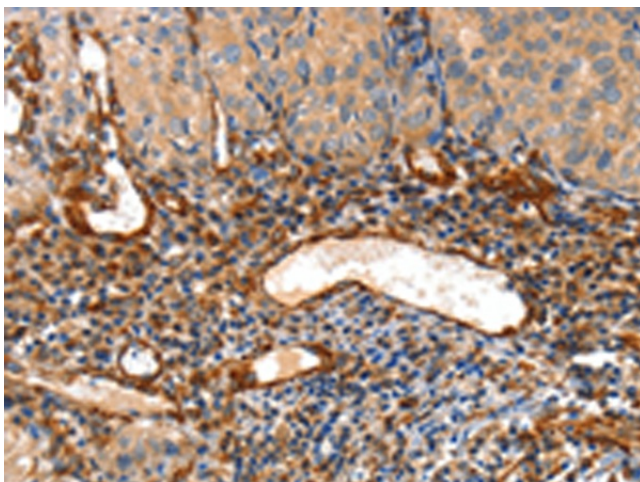
Lysate: 40 µg

Lane: HeLa cells

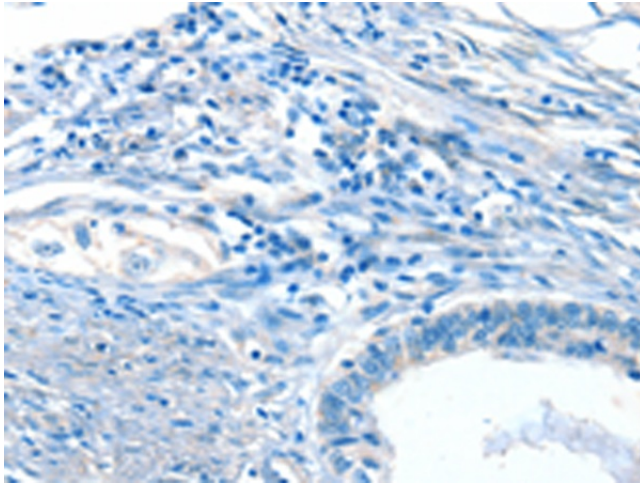
Primary antibody: TA349675 (AIFM3 Antibody) at dilution 1/290

Secondary antibody: Goat anti rabbit IgG at 1/8000 dilution

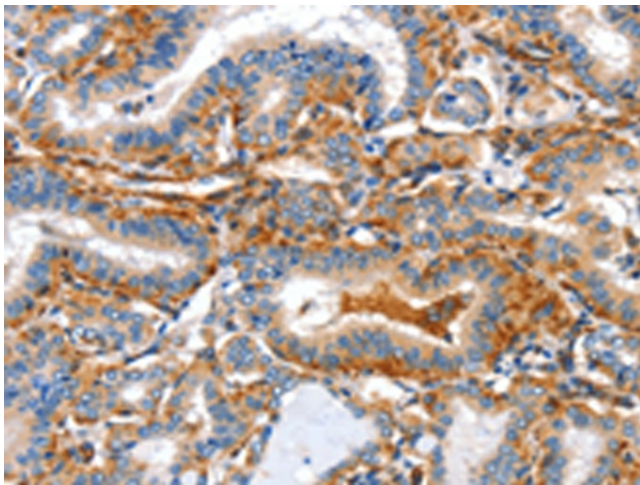
Exposure time: 5 seconds



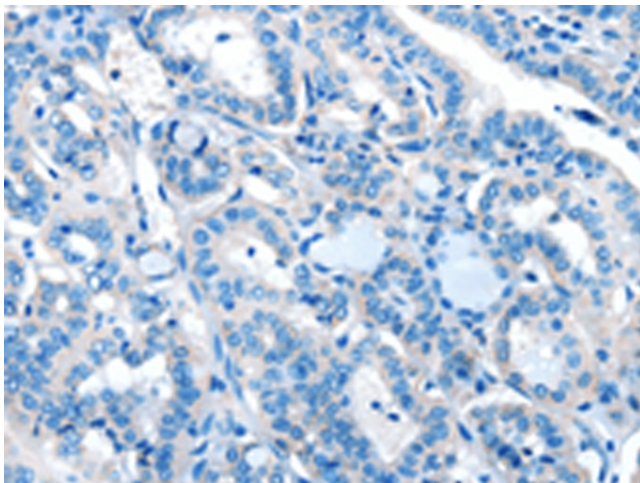
Immunohistochemistry of paraffin-embedded Human cervical cancer tissue using TA349675 (AIFM3 Antibody) at dilution 1/50 (Original magnification: ×200)



Immunohistochemistry of paraffin-embedded Human cervical cancer tissue using TA349675 (AIFM3 Antibody) at dilution 1/50, treated with fusion protein. (Original magnification: ×200)



Immunohistochemistry of paraffin-embedded Human thyroid cancer tissue using TA349675 (AIFM3 Antibody) at dilution 1/50 (Original magnification: ×200)



Immunohistochemistry of paraffin-embedded Human thyroid cancer tissue using TA349675 (AIFM3 Antibody) at dilution 1/50, treated with fusion protein. (Original magnification: ×200)