

## Product datasheet for **TA349672**

### alpha Actinin 4 (ACTN4) Rabbit Polyclonal Antibody

#### Product data:

Product Type:	Primary Antibodies
Applications:	IHC, WB
Recommended Dilution:	WB: 500-2000 WB positive control: Lovo cells and mouse kidney tissue, 231 and hepG2 cells IHC: 50-200 Positive control: Human esophagus cancer Predicted cell location: Cytoplasm
Reactivity:	Human, Mouse, Rat
Host:	Rabbit
Isotype:	IgG
Clonality:	Polyclonal
Immunogen:	Fusion protein of human ACTN4
Formulation:	pH7.4 PBS, 0.05% NaN <sub>3</sub> , 40% Glycerol
Concentration:	lot specific
Purification:	Antigen affinity purification
Conjugation:	Unconjugated
Storage:	Store at -20°C as received.
Stability:	Stable for 12 months from date of receipt.
Predicted Protein Size:	105 kDa
Gene Name:	actinin alpha 4
Database Link:	<a href="#">NP_004915</a> <a href="#">Entrez Gene 60595 Mouse</a> <a href="#">Entrez Gene 63836 Rat</a> <a href="#">Entrez Gene 81 Human</a> <a href="#">O43707</a>



[View online »](#)

**Background:**

Alpha actinins belong to the spectrin gene superfamily which represents a diverse group of cytoskeletal proteins, including the alpha and beta spectrins and dystrophins. Alpha actinin is an actin-binding protein with multiple roles in different cell types. In nonmuscle cells, the cytoskeletal isoform is found along microfilament bundles and adherens-type junctions, where it is involved in binding actin to the membrane. In contrast, skeletal, cardiac, and smooth muscle isoforms are localized to the Z-disc and analogous dense bodies, where they help anchor the myofibrillar actin filaments. This gene encodes a nonmuscle, alpha actinin isoform which is concentrated in the cytoplasm, and thought to be involved in metastatic processes.

**Synonyms:**

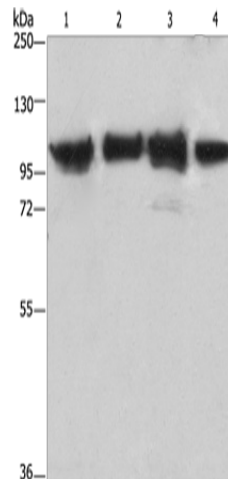
ACTININ-4; FSGS; FSGS1

**Protein Families:**

Druggable Genome

**Protein Pathways:**

Adherens junction, Arrhythmogenic right ventricular cardiomyopathy (ARVC), Focal adhesion, Leukocyte transendothelial migration, Regulation of actin cytoskeleton, Systemic lupus erythematosus, Tight junction

**Product images:**

Gel: 6%SDS-PAGE

Lysate: 40 µg

Lane 1-4: Lovo cells  
mouse kidney tissue

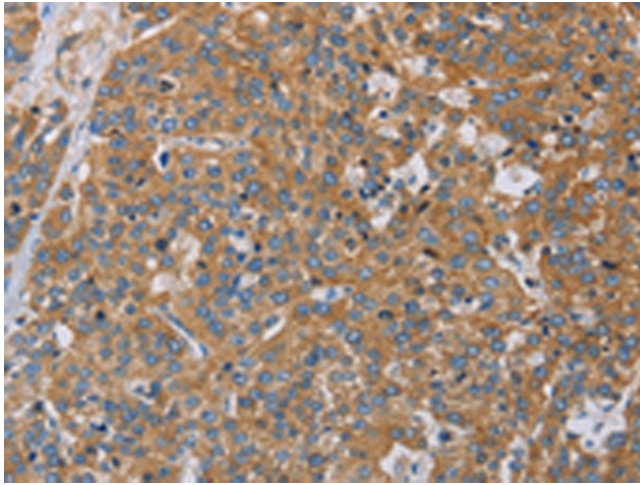
231 cells

hepG2 cells

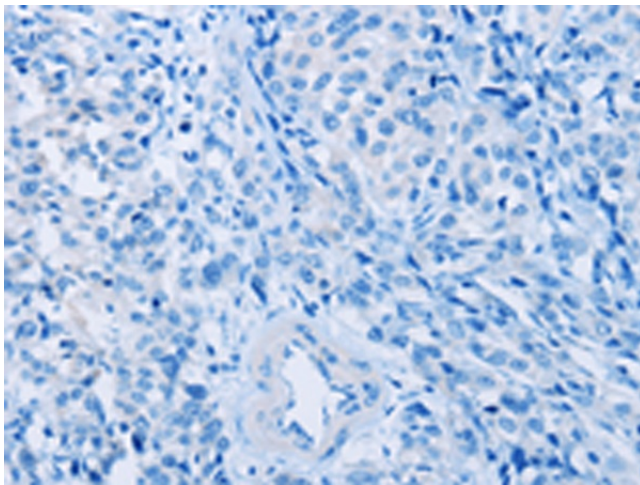
Primary antibody: TA349672 (ACTN4 Antibody) at  
dilution 1/485

Secondary antibody: Goat anti rabbit IgG at  
1/8000 dilution

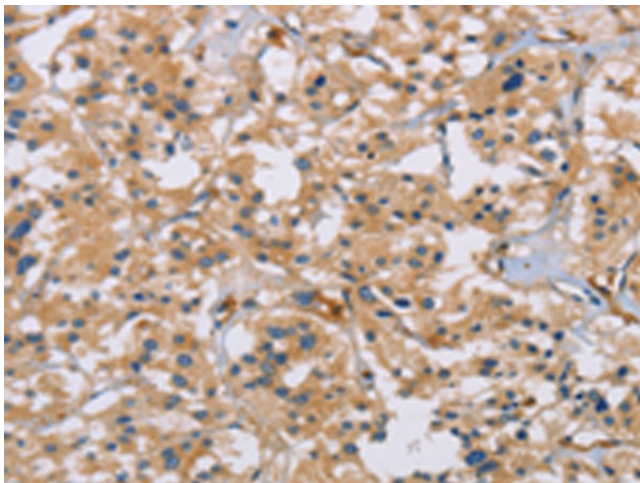
Exposure time: 10 seconds



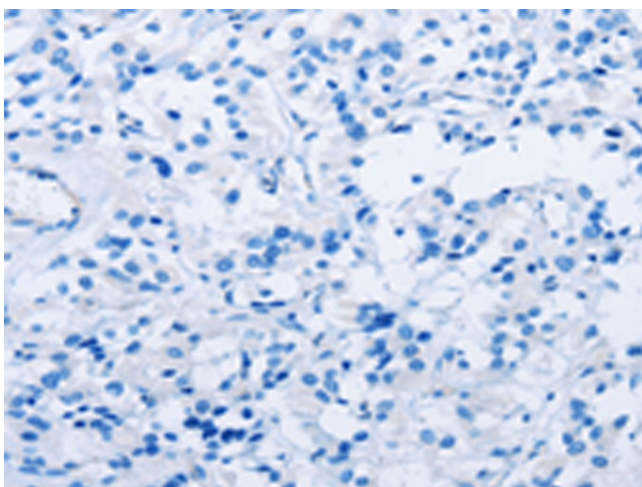
Immunohistochemistry of paraffin-embedded Human esophagus cancer tissue using TA349672 (ACTN4 Antibody) at dilution 1/60 (Original magnification: ×200)



Immunohistochemistry of paraffin-embedded Human esophagus cancer tissue using TA349672 (ACTN4 Antibody) at dilution 1/60, treated with fusion protein. (Original magnification: ×200)



Immunohistochemistry of paraffin-embedded Human thyroid cancer tissue using TA349672 (ACTN4 Antibody) at dilution 1/60 (Original magnification: ×200)



Immunohistochemistry of paraffin-embedded Human thyroid cancer tissue using TA349672 (ACTN4 Antibody) at dilution 1/60, treated with fusion protein. (Original magnification: ×200)