

Product datasheet for **TA349667S**

ASPA Rabbit Polyclonal Antibody

Product data:

Product Type:	Primary Antibodies
Applications:	IHC, WB
Recommended Dilution:	WB: 1000-5000 WB positive control: Mouse kidney and human fetal kidney tissue IHC: 100-300 Positive control: Human liver cancer Predicted cell location: Cytoplasm
Reactivity:	Human, Mouse, Rat
Host:	Rabbit
Isotype:	IgG
Clonality:	Polyclonal
Immunogen:	Fusion protein of human ASPA
Formulation:	pH7.4 PBS, 0.05% NaN ₃ , 40% Glycerol
Purification:	Antigen affinity purification
Conjugation:	Unconjugated
Storage:	Store at -20°C as received.
Stability:	Stable for 12 months from date of receipt.
Predicted Protein Size:	36 kDa
Gene Name:	aspartoacylase
Database Link:	NP_000040 Entrez Gene 11484 MouseEntrez Gene 79251 RatEntrez Gene 443 Human P45381
Background:	This gene encodes an enzyme that catalyzes the conversion of N-acetyl_L-aspartic acid (NAA) to aspartate and acetate. NAA is abundant in the brain where hydrolysis by aspartoacylase is thought to help maintain white matter. This protein is an NAA scavenger in other tissues. Mutations in this gene cause Canavan disease. Alternatively spliced transcript variants have been found for this gene.
Synonyms:	ACY2; ASP



[View online »](#)

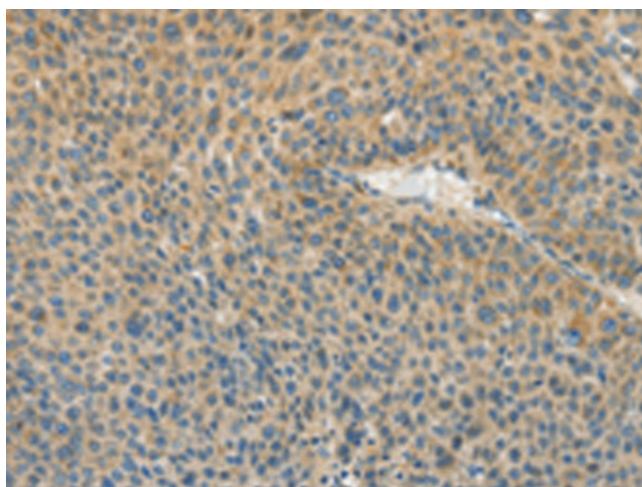
Protein Families: Druggable Genome

Protein Pathways: Alanine, aspartate and glutamate metabolism, Histidine metabolism

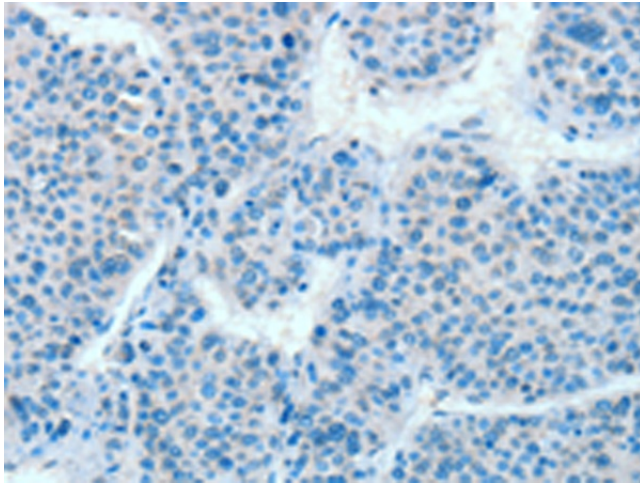
Product images:



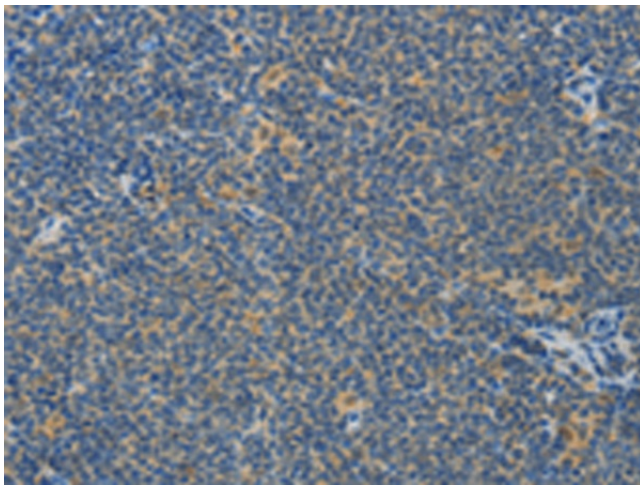
Gel: 8%SDS-PAGE
Lysate: 40 μ g
Lane 1-2: Mouse kidney tissue
human fetal kidney tissue
Primary antibody: [TA349667] (ASPA Antibody) at dilution 1/1400
Secondary antibody: Goat anti rabbit IgG at 1/8000 dilution
Exposure time: 1 second



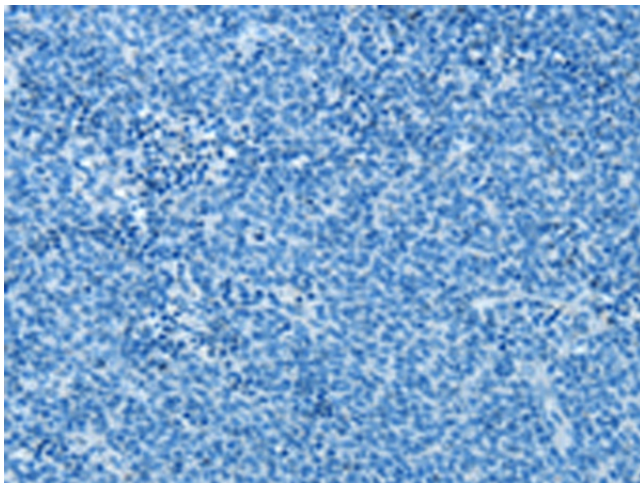
Immunohistochemistry of paraffin-embedded Human liver cancer tissue using [TA349667] (ASPA Antibody) at dilution 1/80 (Original magnification: \times 200)



Immunohistochemistry of paraffin-embedded Human liver cancer tissue using [TA349667] (ASPA Antibody) at dilution 1/80, treated with fusion protein. (Original magnification: ×200)



Immunohistochemistry of paraffin-embedded Human lymphoma tissue using [TA349667] (ASPA Antibody) at dilution 1/80 (Original magnification: ×200)



Immunohistochemistry of paraffin-embedded Human lymphoma tissue using [TA349667] (ASPA Antibody) at dilution 1/80, treated with fusion protein. (Original magnification: ×200)