

Product datasheet for **TA349664S**

ASF1A Rabbit Polyclonal Antibody

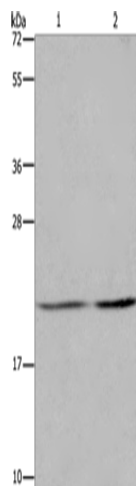
Product data:

Product Type:	Primary Antibodies
Applications:	WB
Recommended Dilution:	WB: 1000-5000 WB positive control: A549 and Hela cells
Reactivity:	Human, Mouse
Host:	Rabbit
Isotype:	IgG
Clonality:	Polyclonal
Immunogen:	Fusion protein of human ASF1A
Formulation:	pH7.4 PBS, 0.05% NaN ₃ , 40% Glycerol
Purification:	Antigen affinity purification
Conjugation:	Unconjugated
Storage:	Store at -20°C as received.
Stability:	Stable for 12 months from date of receipt.
Predicted Protein Size:	23 kDa
Gene Name:	anti-silencing function 1A histone chaperone
Database Link:	NP_054753 Entrez Gene 66403 Mouse Entrez Gene 25842 Human Q9Y294
Background:	This gene encodes a member of the H3/H4 family of histone chaperone proteins and is similar to the anti-silencing function-1 gene in yeast. The protein is a key component of a histone donor complex that functions in nucleosome assembly. It interacts with histones H3 and H4, and functions together with a chromatin assembly factor during DNA replication and repair.
Synonyms:	CGI-98; CIA; HSPC146



[View online »](#)

Product images:



Gel: 8%SDS-PAGE

Lysate: 40 μ g

Lane 1-2: A549 cells

Hela cells

Primary antibody: [TA349664] (ASF1A Antibody)
at dilution 1/1200

Secondary antibody: Goat anti rabbit IgG at
1/8000 dilution

Exposure time: 20 seconds