

Product datasheet for **TA349660**

ASB8 Rabbit Polyclonal Antibody

Product data:

Product Type:	Primary Antibodies
Applications:	IHC, WB
Recommended Dilution:	WB: 200-1000 WB positive control: K562 cell IHC: 25-100 Positive control: Human colon cancer Predicted cell location: Cytoplasm
Reactivity:	Human, Mouse
Host:	Rabbit
Isotype:	IgG
Clonality:	Polyclonal
Immunogen:	Fusion protein of human ASB8
Formulation:	pH7.4 PBS, 0.05% NaN ₃ , 40% Glycerol
Concentration:	lot specific
Purification:	Antigen affinity purification
Conjugation:	Unconjugated
Storage:	Store at -20°C as received.
Stability:	Stable for 12 months from date of receipt.
Gene Name:	ankyrin repeat and SOCS box containing 8
Database Link:	NP_077000 Entrez Gene 78541 Mouse Entrez Gene 140461 Human Q9H765



[View online »](#)

Background:

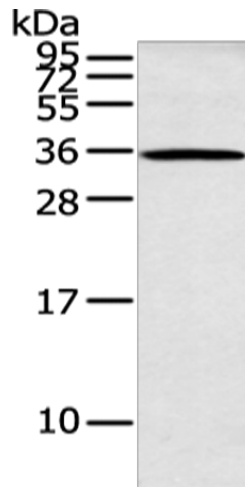
ASB-8 (ankyrin repeat and SOCS box-containing 8) is a 288 amino acid member of the ASB family that contains one SOCS box domain and four ANK repeats. Localized to the cytoplasm, ASB-8 functions as a substrate-recognition component of an E3 ubiquitin-protein ligase complex and, working in conjunction with other proteins, plays a role in the ubiquitination and subsequent proteasomal degradation of target proteins. The highest level of ASB-8 expression has been detected in skeletal muscle. ASB-8 is also expressed in heart, brain, placenta, liver, kidney and pancreas.

Synonyms:

PP14212

Protein Families:

Druggable Genome

Product images:

Gel: 12%SDS-PAGE

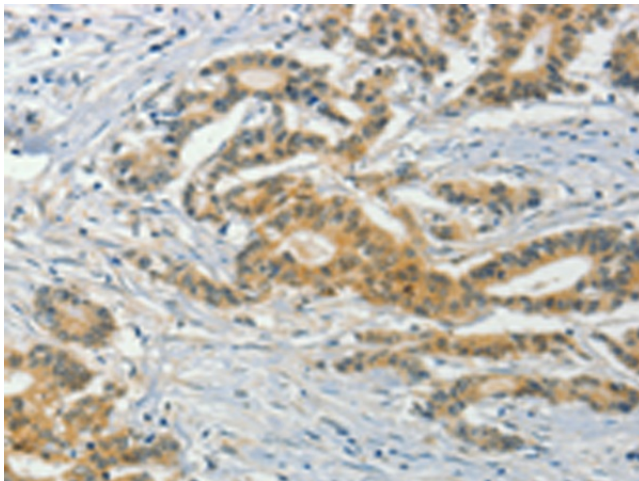
Lysate: 40 µg

Lane: K562 cell

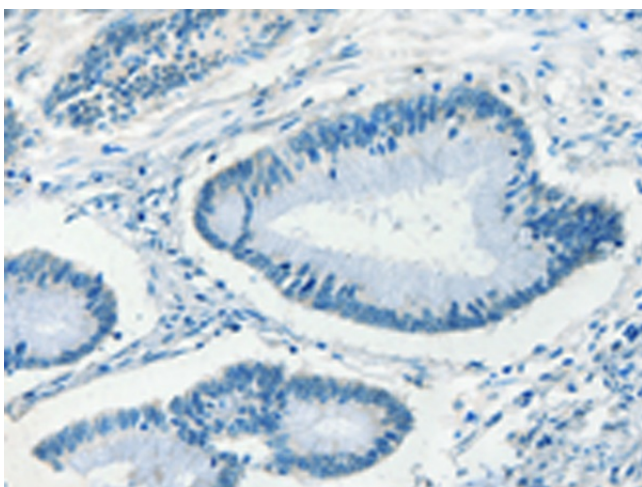
Primary antibody: TA349660 (ASB8 Antibody) at dilution 1/200

Secondary antibody: Goat anti rabbit IgG at 1/8000 dilution

Exposure time: 30 seconds



Immunohistochemistry of paraffin-embedded Human colon cancer tissue using TA349660 (ASB8 Antibody) at dilution 1/50 (Original magnification: ×200)



Immunohistochemistry of paraffin-embedded Human colon cancer tissue using TA349660 (ASB8 Antibody) at dilution 1/50, treated with fusion protein. (Original magnification: $\times 200$)