

Product datasheet for **TA349659S**

ASAH2 Rabbit Polyclonal Antibody

Product data:

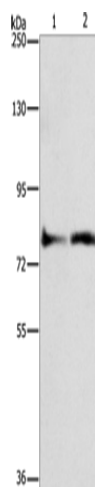
Product Type:	Primary Antibodies
Applications:	IHC, WB
Recommended Dilution:	WB: 200-1000 WB positive control: Lovo cells and mouse heart tissue IHC: 25-100 Positive control: Human brain Predicted cell location: Cytoplasm
Reactivity:	Human, Mouse, Rat
Host:	Rabbit
Isotype:	IgG
Clonality:	Polyclonal
Immunogen:	Fusion protein of human ASAH2
Formulation:	pH7.4 PBS, 0.05% NaN ₃ , 40% Glycerol
Purification:	Antigen affinity purification
Conjugation:	Unconjugated
Storage:	Store at -20°C as received.
Stability:	Stable for 12 months from date of receipt.
Predicted Protein Size:	86 kDa
Gene Name:	N-acylsphingosine amidohydrolase (non-lysosomal ceramidase) 2
Database Link:	NP_063946 Entrez Gene 54447 MouseEntrez Gene 114104 RatEntrez Gene 56624 Human Q9NR71
Background:	Ceramidases (EC 3.5.1.23), such as ASAH2, catalyze hydrolysis of the N-acyl linkage of ceramide, a second messenger in a variety of cellular events, to produce sphingosine. Sphingosine exerts both mitogenic and apoptosis-inducing activities, and its phosphorylated form functions as an intra- and intercellular second messenger.
Synonyms:	BCDase; HNAC1; LCDase; N-CDase; NCDase
Protein Families:	Transmembrane



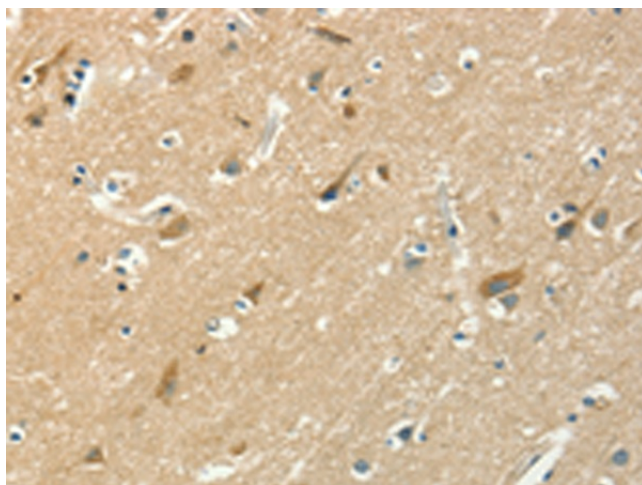
[View online »](#)

Protein Pathways: Metabolic pathways, Sphingolipid metabolism

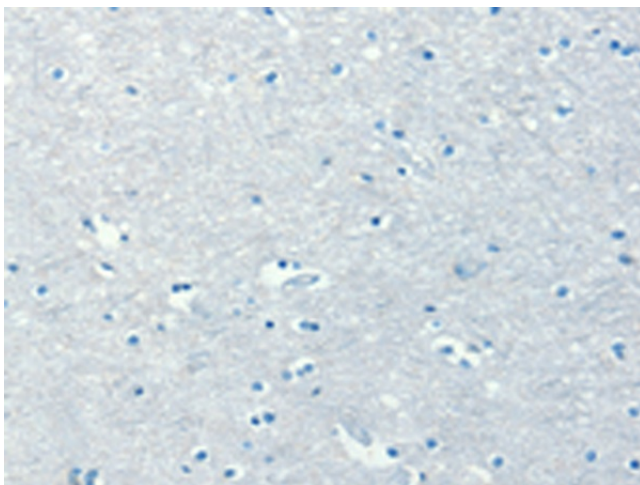
Product images:



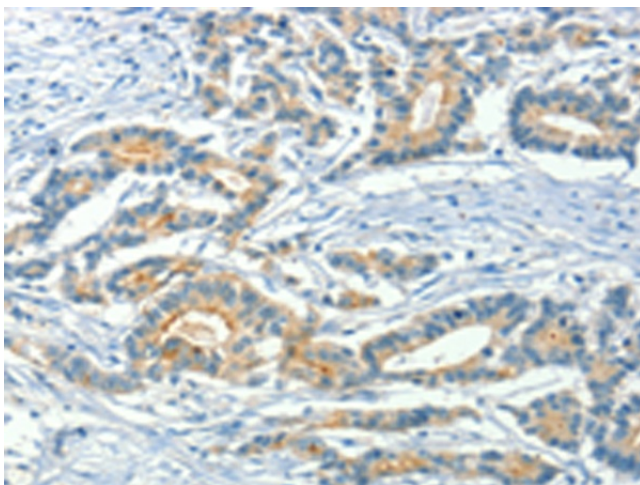
Gel: 10%SDS-PAGE
Lysate: 40 µg
Lane 1-2: Lovo cells
mouse heart tissue
Primary antibody: [TA349659] (ASAH2 Antibody)
at dilution 1/270
Secondary antibody: Goat anti rabbit IgG at
1/8000 dilution
Exposure time: 40 seconds



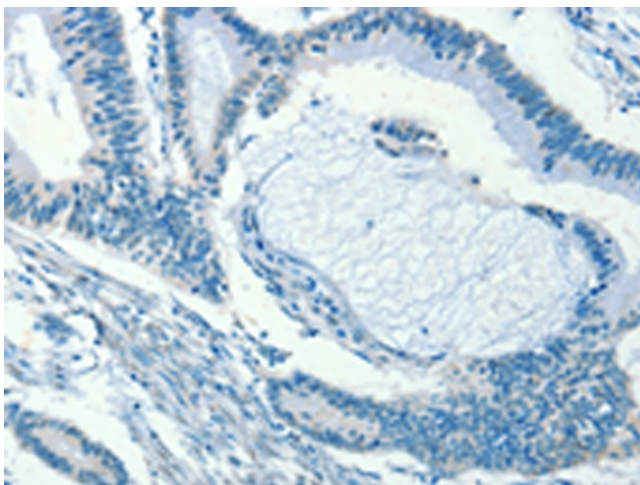
Immunohistochemistry of paraffin-embedded
Human brain tissue using [TA349659] (ASAH2
Antibody) at dilution 1/50 (Original magnification:
×200)



Immunohistochemistry of paraffin-embedded Human brain tissue using [TA349659] (ASAH2 Antibody) at dilution 1/50, treated with fusion protein. (Original magnification: $\times 200$)



Immunohistochemistry of paraffin-embedded Human colon cancer tissue using [TA349659] (ASAH2 Antibody) at dilution 1/50 (Original magnification: $\times 200$)



Immunohistochemistry of paraffin-embedded Human colon cancer tissue using [TA349659] (ASAH2 Antibody) at dilution 1/50, treated with fusion protein. (Original magnification: $\times 200$)