

## Product datasheet for **TA349658**

### ASAH1 Rabbit Polyclonal Antibody

#### Product data:

Product Type:	Primary Antibodies
Applications:	IHC, WB
Recommended Dilution:	WB: 1000-5000 WB positive control: Human lung cancer tissue, human fetal brain and fetal lung tissue IHC: 50-200 Positive control: Human cervical cancer Predicted cell location: Cytoplasm
Reactivity:	Human, Mouse, Rat
Host:	Rabbit
Isotype:	IgG
Clonality:	Polyclonal
Immunogen:	Fusion protein of human ASAH1
Formulation:	pH7.4 PBS, 0.05% NaN <sub>3</sub> , 40% Glycerol
Concentration:	lot specific
Purification:	Antigen affinity purification
Conjugation:	Unconjugated
Storage:	Store at -20°C as received.
Stability:	Stable for 12 months from date of receipt.
Predicted Protein Size:	45 kDa
Gene Name:	N-acylsphingosine amidohydrolase (acid ceramidase) 1
Database Link:	<a href="#">NP_004306</a> <a href="#">Entrez Gene 11886 Mouse</a> <a href="#">Entrez Gene 84431 Rat</a> <a href="#">Entrez Gene 427 Human</a> <a href="#">Q13510</a>



[View online »](#)

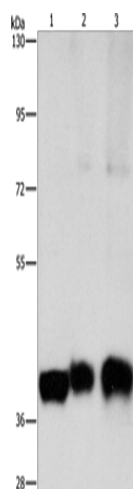
**Background:** This gene encodes a heterodimeric protein consisting of a nonglycosylated alpha subunit and a glycosylated beta subunit that is cleaved to the mature enzyme posttranslationally. The encoded protein catalyzes the synthesis and degradation of ceramide into sphingosine and fatty acid. Mutations in this gene have been associated with a lysosomal storage disorder known as Farber disease. Multiple transcript variants encoding several distinct isoforms have been identified for this gene.

**Synonyms:** AC; ACDase; ASAH; PHP; PHP32; SMAPME

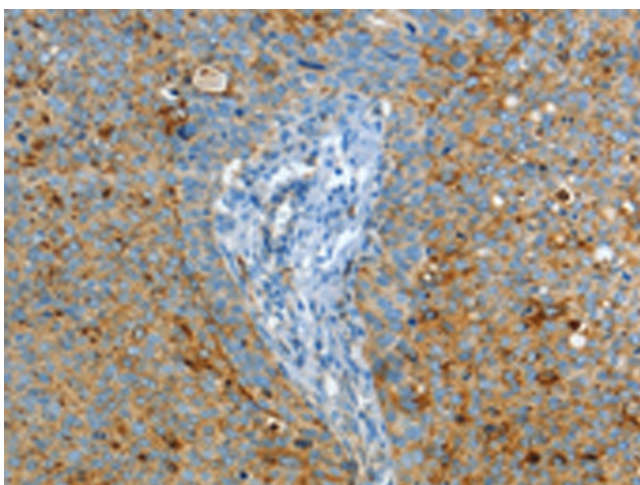
**Protein Families:** Druggable Genome

**Protein Pathways:** Lysosome, Metabolic pathways, Sphingolipid metabolism

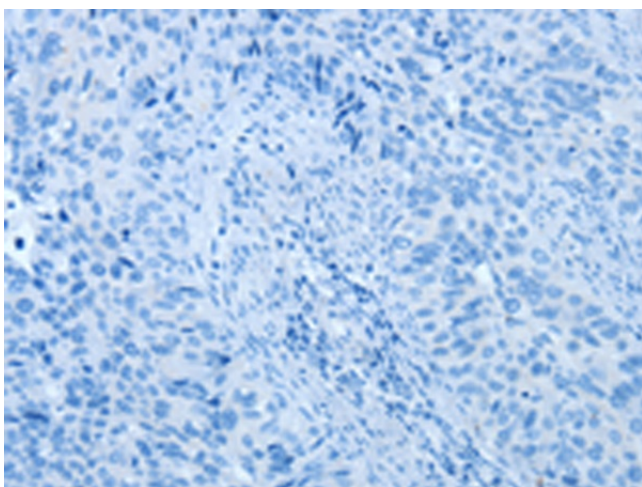
### Product images:



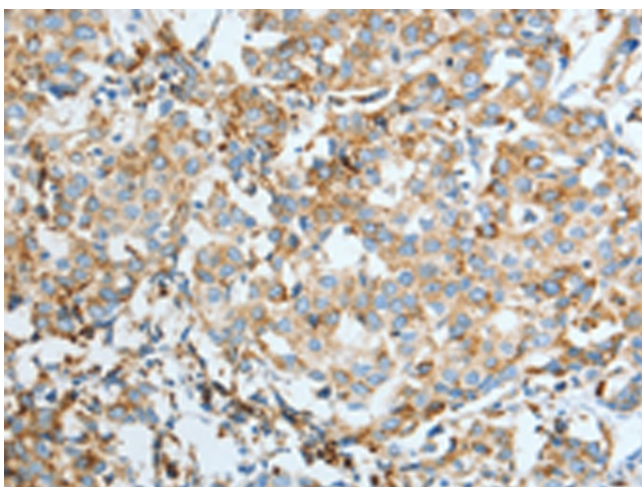
Gel: 8%SDS-PAGE  
Lysate: 40 µg  
Lane 1-3: Human lung cancer tissue  
human fetal brain tissue  
Human fetal lung tissue  
Primary antibody: TA349658 (ASAH1 Antibody) at dilution 1/850  
Secondary antibody: Goat anti rabbit IgG at 1/8000 dilution  
Exposure time: 30 seconds



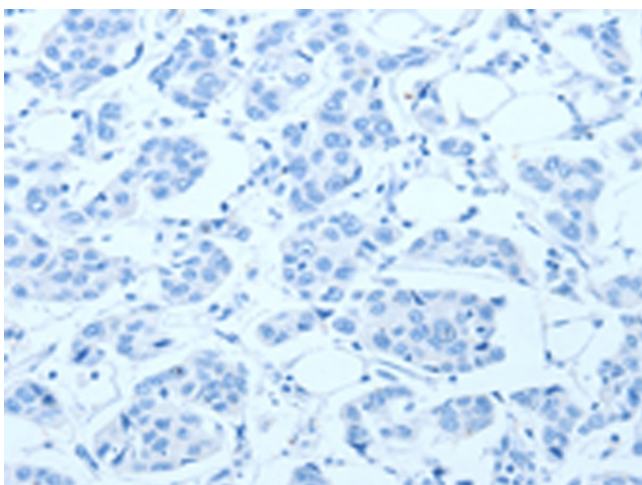
Immunohistochemistry of paraffin-embedded Human cervical cancer tissue using TA349658 (ASAH1 Antibody) at dilution 1/50 (Original magnification: ×200)



Immunohistochemistry of paraffin-embedded Human cervical cancer tissue using TA349658 (ASAH1 Antibody) at dilution 1/50, treated with fusion protein. (Original magnification:  $\times 200$ )



Immunohistochemistry of paraffin-embedded Human breast cancer tissue using TA349658 (ASAH1 Antibody) at dilution 1/50 (Original magnification:  $\times 200$ )



Immunohistochemistry of paraffin-embedded Human breast cancer tissue using TA349658 (ASAH1 Antibody) at dilution 1/50, treated with fusion protein. (Original magnification:  $\times 200$ )