

Product datasheet for **TA349657**

SPHK2 Rabbit Polyclonal Antibody

Product data:

Product Type:	Primary Antibodies
Applications:	IHC, WB
Recommended Dilution:	WB: 200-1000 WB positive control: Mouse liver tissue IHC: 100-300 Positive control: Human colon cancer Predicted cell location: Cytoplasm and membrane
Reactivity:	Human, Mouse
Host:	Rabbit
Isotype:	IgG
Clonality:	Polyclonal
Immunogen:	Fusion protein of human SPHK2
Formulation:	pH7.4 PBS, 0.05% NaN ₃ , 40% Glycerol
Concentration:	lot specific
Purification:	Antigen affinity purification
Conjugation:	Unconjugated
Storage:	Store at -20°C as received.
Stability:	Stable for 12 months from date of receipt.
Predicted Protein Size:	69 kDa
Gene Name:	sphingosine kinase 2
Database Link:	NP_064511 Entrez Gene 56632 Mouse Entrez Gene 56848 Human Q9NRA0



[View online »](#)

Background: This gene encodes one of two sphingosine kinase isozymes that catalyze the phosphorylation of sphingosine into sphingosine 1-phosphate. Sphingosine 1-phosphate mediates many cellular processes including migration, proliferation and apoptosis, and also plays a role in several types of cancer by promoting angiogenesis and tumorigenesis. The encoded protein may play a role in breast cancer proliferation and chemoresistance. Alternatively spliced transcript variants encoding multiple isoforms have been observed for this gene.

Synonyms: SK-2; SK 2; SPK-2; SPK 2

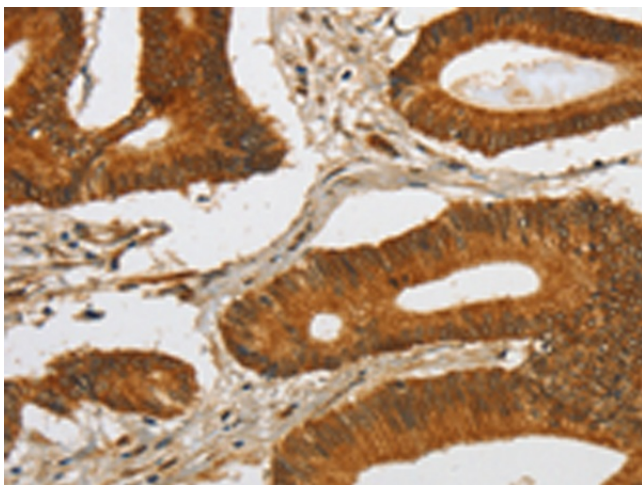
Protein Families: Druggable Genome

Protein Pathways: Calcium signaling pathway, Fc gamma R-mediated phagocytosis, Metabolic pathways, Sphingolipid metabolism, VEGF signaling pathway

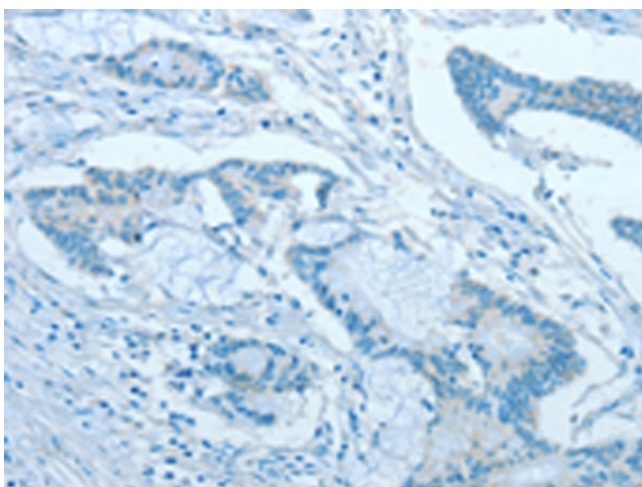
Product images:



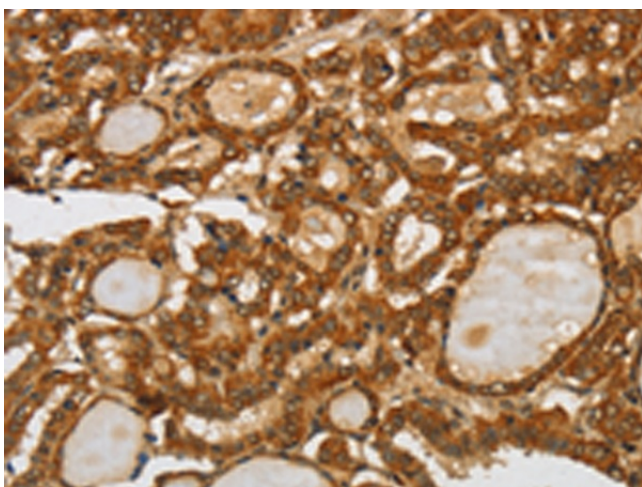
Gel: 8%SDS-PAGE
Lysate: 40 µg
Lane: Mouse liver tissue
Primary antibody: TA349657 (SPHK2 Antibody) at dilution 1/200
Secondary antibody: Goat anti rabbit IgG at 1/8000 dilution
Exposure time: 5 minutes



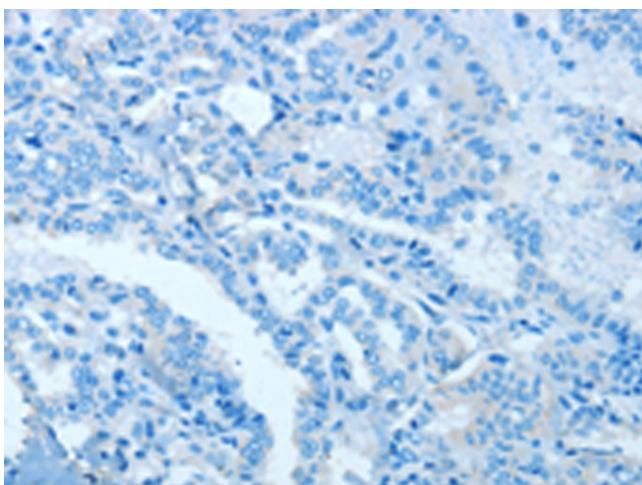
Immunohistochemistry of paraffin-embedded Human colon cancer tissue using TA349657 (SPHK2 Antibody) at dilution 1/80 (Original magnification: ×200)



Immunohistochemistry of paraffin-embedded Human colon cancer tissue using TA349657 (SPHK2 Antibody) at dilution 1/80, treated with fusion protein. (Original magnification: $\times 200$)



Immunohistochemistry of paraffin-embedded Human thyroid cancer tissue using TA349657 (SPHK2 Antibody) at dilution 1/80 (Original magnification: $\times 200$)



Immunohistochemistry of paraffin-embedded Human thyroid cancer tissue using TA349657 (SPHK2 Antibody) at dilution 1/80, treated with fusion protein. (Original magnification: $\times 200$)