

## Product datasheet for **TA349651**

### PIP5K2 alpha (PIP4K2A) Rabbit Polyclonal Antibody

#### Product data:

Product Type:	Primary Antibodies
Applications:	IHC, WB
Recommended Dilution:	WB: 500-2000 WB positive control: K562 and mouse brain tissue IHC: 50-200 Positive control: Human thyroid cancer Predicted cell location: Cytoplasm
Reactivity:	Human, Mouse, Rat
Host:	Rabbit
Isotype:	IgG
Clonality:	Polyclonal
Immunogen:	Fusion protein of human PIP4K2A
Formulation:	pH7.4 PBS, 0.05% NaN <sub>3</sub> , 40% Glycerol
Concentration:	lot specific
Purification:	Antigen affinity purification
Conjugation:	Unconjugated
Storage:	Store at -20°C as received.
Stability:	Stable for 12 months from date of receipt.
Predicted Protein Size:	46 kDa
Gene Name:	phosphatidylinositol-5-phosphate 4-kinase type 2 alpha
Database Link:	<a href="#">NP_005019</a> <a href="#">Entrez Gene 18718 Mouse</a> <a href="#">Entrez Gene 116723 Rat</a> <a href="#">Entrez Gene 5305 Human</a> <a href="#">P48426</a>



[View online »](#)

**Background:**

Phosphatidylinositol-5,4-bisphosphate, the precursor to second messengers of the phosphoinositide signal transduction pathways, is thought to be involved in the regulation of secretion, cell proliferation, differentiation, and motility. The protein encoded by this gene is one of a family of enzymes capable of catalyzing the phosphorylation of phosphatidylinositol-5-phosphate on the fourth hydroxyl of the myo-inositol ring to form phosphatidylinositol-5,4-bisphosphate. The amino acid sequence of this enzyme does not show homology to other kinases, but the recombinant protein does exhibit kinase activity. This gene is a member of the phosphatidylinositol-5-phosphate 4-kinase family.

**Synonyms:**

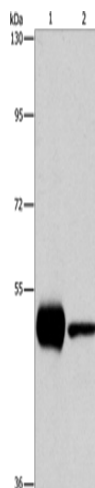
PI5P4KA; PIP5K2A; PIP5KII-alpha; PIP5KIIA; PIPK

**Protein Families:**

Druggable Genome

**Protein Pathways:**

Inositol phosphate metabolism, Phosphatidylinositol signaling system, Regulation of actin cytoskeleton

**Product images:**

Gel: 10%SDS-PAGE

Lysate: 40 µg

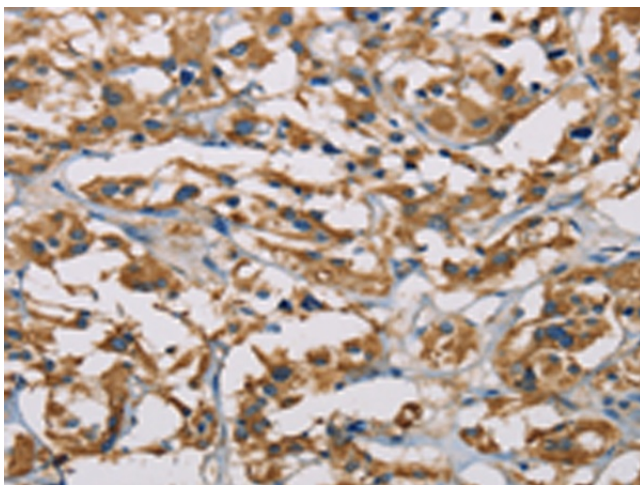
Lane 1-2: K562 cells

mouse brain tissue

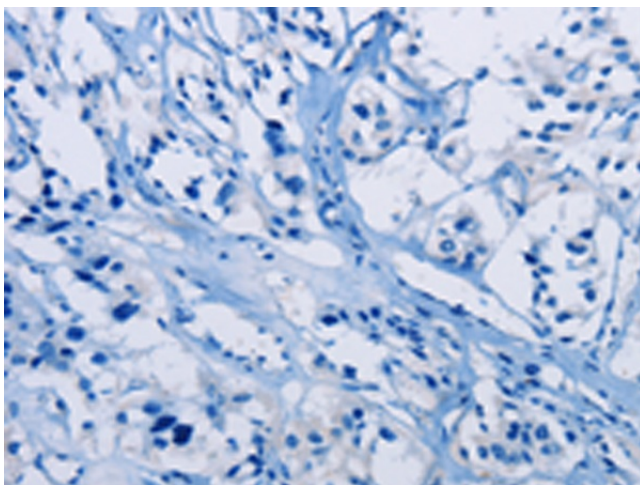
Primary antibody: TA349651 (PIP4K2A Antibody)  
at dilution 1/1150

Secondary antibody: Goat anti rabbit IgG at  
1/8000 dilution

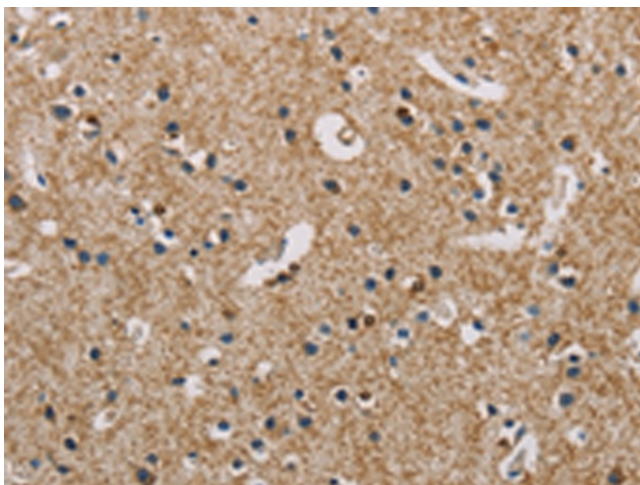
Exposure time: 10 seconds



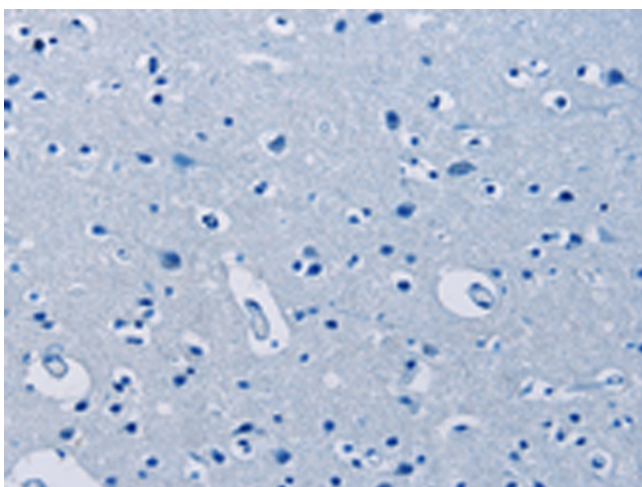
Immunohistochemistry of paraffin-embedded Human thyroid cancer tissue using TA349651 (PIP4K2A Antibody) at dilution 1/50 (Original magnification:  $\times 200$ )



Immunohistochemistry of paraffin-embedded Human thyroid cancer tissue using TA349651 (PIP4K2A Antibody) at dilution 1/50, treated with fusion protein. (Original magnification:  $\times 200$ )



Immunohistochemistry of paraffin-embedded Human brain tissue using TA349651 (PIP4K2A Antibody) at dilution 1/50 (Original magnification:  $\times 200$ )



Immunohistochemistry of paraffin-embedded Human brain tissue using TA349651 (PIP4K2A Antibody) at dilution 1/50, treated with fusion protein. (Original magnification: ×200)