

## Product datasheet for **TA349647**

### CK1 epsilon (CSNK1E) Rabbit Polyclonal Antibody

#### Product data:

Product Type:	Primary Antibodies
Applications:	IHC, WB
Recommended Dilution:	WB: 500-2000 WB positive control: Hela and A431 cells IHC: 50-200 Positive control: Human cervical cancer Predicted cell location: Cytoplasm
Reactivity:	Human, Mouse
Host:	Rabbit
Isotype:	IgG
Clonality:	Polyclonal
Immunogen:	Fusion protein of human CSNK1E
Formulation:	pH7.4 PBS, 0.05% NaN <sub>3</sub> , 40% Glycerol
Concentration:	lot specific
Purification:	Antigen affinity purification
Conjugation:	Unconjugated
Storage:	Store at -20°C as received.
Stability:	Stable for 12 months from date of receipt.
Predicted Protein Size:	47 kDa
Gene Name:	casein kinase 1 epsilon
Database Link:	<a href="#">NP_689407</a> <a href="#">Entrez Gene 27373 Mouse</a> <a href="#">Entrez Gene 1454 Human</a> <a href="#">P49674</a>



[View online »](#)

**Background:**

The protein encoded by this gene is a serine/threonine protein kinase and a member of the casein kinase I protein family, whose members have been implicated in the control of cytoplasmic and nuclear processes, including DNA replication and repair. The encoded protein is found in the cytoplasm as a monomer and can phosphorylate a variety of proteins, including itself. This protein has been shown to phosphorylate period, a circadian rhythm protein. Two transcript variants encoding the same protein have been found for this gene.

**Synonyms:**

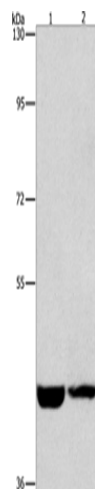
CKIepsilon; HCKIE

**Protein Families:**

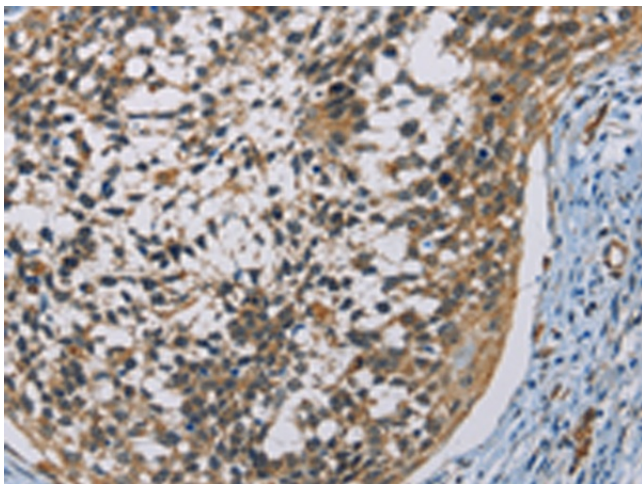
Druggable Genome, Protein Kinase

**Protein Pathways:**

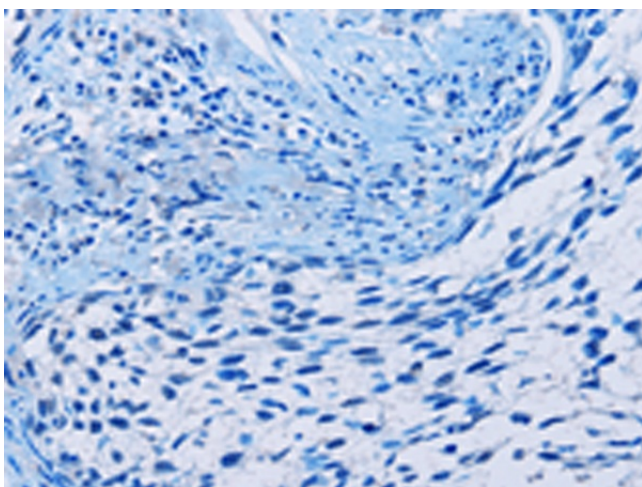
Circadian rhythm - mammal, Hedgehog signaling pathway, Wnt signaling pathway

**Product images:**


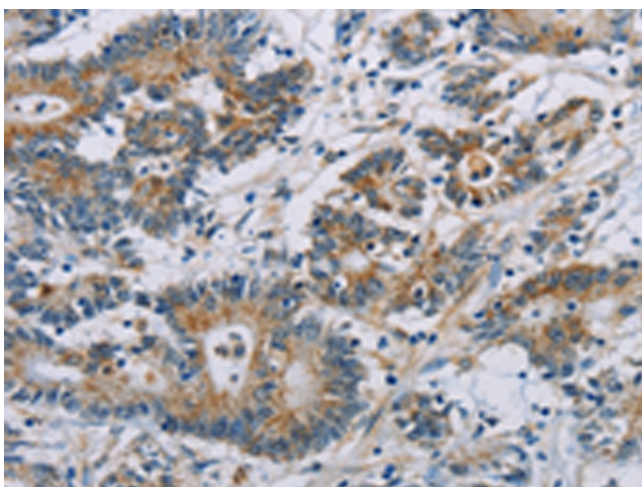
Gel: 10%SDS-PAGE  
 Lysate: 40 µg  
 Lane 1-2: HeLa cells  
 A431 cells  
 Primary antibody: TA349647 (CSNK1E Antibody)  
 at dilution 1/1550  
 Secondary antibody: Goat anti rabbit IgG at  
 1/8000 dilution  
 Exposure time: 1 minute



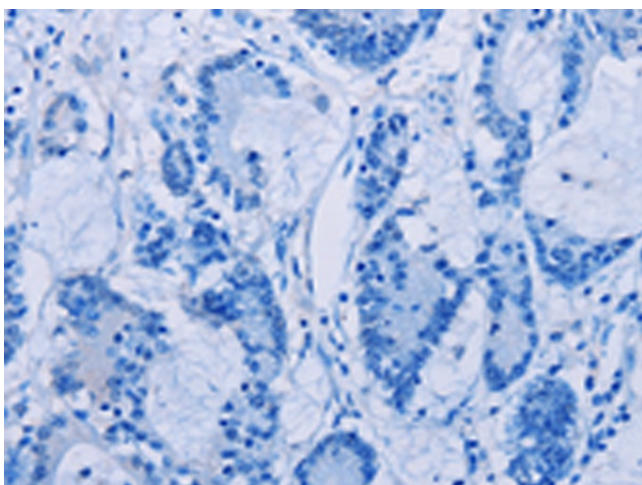
Immunohistochemistry of paraffin-embedded  
 Human cervical cancer tissue using TA349647  
 (CSNK1E Antibody) at dilution 1/60 (Original  
 magnification: ×200)



Immunohistochemistry of paraffin-embedded Human cervical cancer tissue using TA349647 (CSNK1E Antibody) at dilution 1/60, treated with fusion protein. (Original magnification: ×200)



Immunohistochemistry of paraffin-embedded Human colon cancer tissue using TA349647 (CSNK1E Antibody) at dilution 1/60 (Original magnification: ×200)



Immunohistochemistry of paraffin-embedded Human colon cancer tissue using TA349647 (CSNK1E Antibody) at dilution 1/60, treated with fusion protein. (Original magnification: ×200)