

## Product datasheet for **TA349646**

### PGK1 Rabbit Polyclonal Antibody

#### Product data:

Product Type:	Primary Antibodies
Applications:	IHC, WB
Recommended Dilution:	WB: 1000-5000 WB positive control: A549 cells and mouse liver tissue, hepG2 cells IHC: 50-200 Positive control: Human cervical cancer Predicted cell location: Cytoplasm
Reactivity:	Human, Mouse, Rat
Host:	Rabbit
Isotype:	IgG
Clonality:	Polyclonal
Immunogen:	Fusion protein of human PGK1
Formulation:	pH7.4 PBS, 0.05% NaN <sub>3</sub> , 40% Glycerol
Concentration:	lot specific
Purification:	Antigen affinity purification
Conjugation:	Unconjugated
Storage:	Store at -20°C as received.
Stability:	Stable for 12 months from date of receipt.
Predicted Protein Size:	45 kDa
Gene Name:	phosphoglycerate kinase 1
Database Link:	<a href="#">NP_000282</a> <a href="#">Entrez Gene 18655 Mouse</a> <a href="#">Entrez Gene 24644 Rat</a> <a href="#">Entrez Gene 5230 Human</a> <a href="#">P00558</a>
Background:	The protein encoded by this gene is a glycolytic enzyme that catalyzes the conversion of 1,3-diphosphoglycerate to 3-phosphoglycerate. The encoded protein may also act as a cofactor for polymerase alpha. This gene lies on the X-chromosome, while a related pseudogene also has been found on the X-chromosome and another on chromosome 19.
Synonyms:	HEL-S-68p; MIG10; PGKA

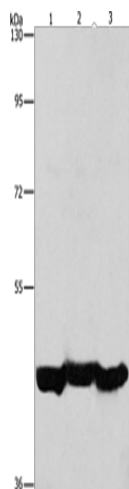


[View online »](#)

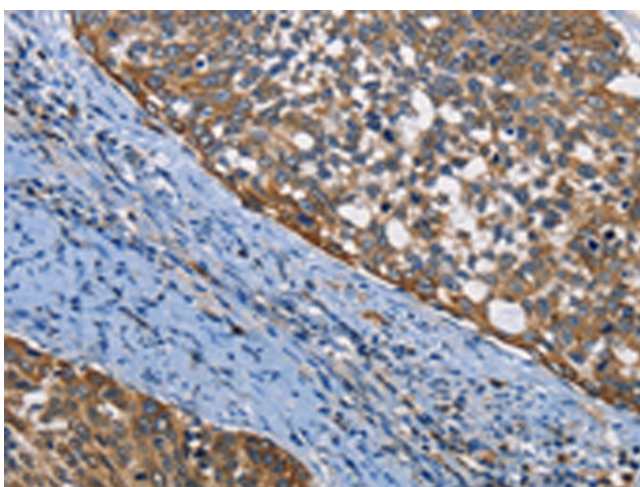
Protein Families: Druggable Genome

Protein Pathways: Glycolysis / Gluconeogenesis, Metabolic pathways

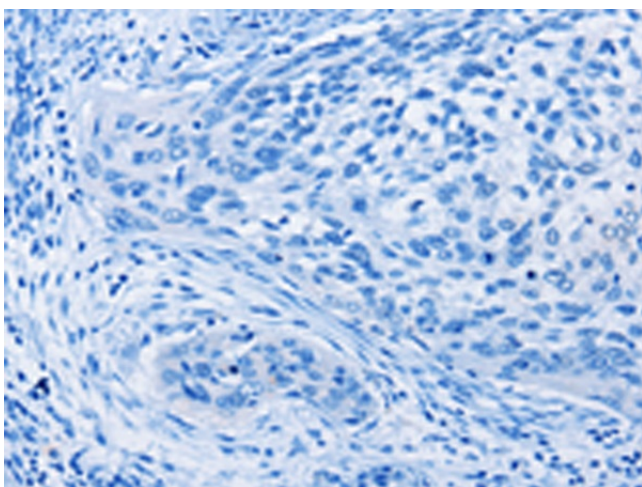
### Product images:



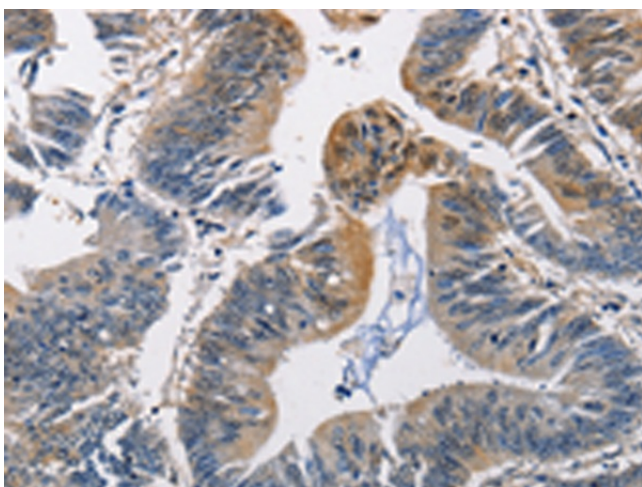
Gel: 10%SDS-PAGE  
Lysate: 40  $\mu$ g  
Lane 1-3: A549 cells  
mouse liver tissue  
hepG2 cells  
Primary antibody: TA349646 (PGK1 Antibody) at dilution 1/1000  
Secondary antibody: Goat anti rabbit IgG at 1/8000 dilution  
Exposure time: 20 seconds



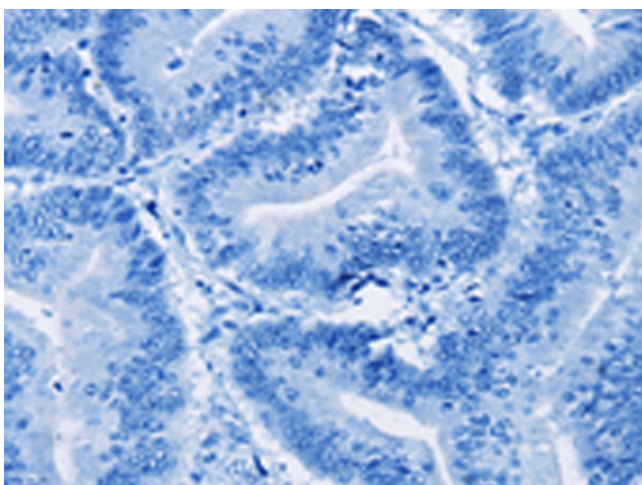
Immunohistochemistry of paraffin-embedded Human cervical cancer tissue using TA349646 (PGK1 Antibody) at dilution 1/50 (Original magnification:  $\times$ 200)



Immunohistochemistry of paraffin-embedded Human cervical cancer tissue using TA349646 (PGK1 Antibody) at dilution 1/50, treated with fusion protein. (Original magnification:  $\times 200$ )



Immunohistochemistry of paraffin-embedded Human colon cancer tissue using TA349646 (PGK1 Antibody) at dilution 1/50 (Original magnification:  $\times 200$ )



Immunohistochemistry of paraffin-embedded Human colon cancer tissue using TA349646 (PGK1 Antibody) at dilution 1/50, treated with fusion protein. (Original magnification:  $\times 200$ )