

Product datasheet for **TA349643S**

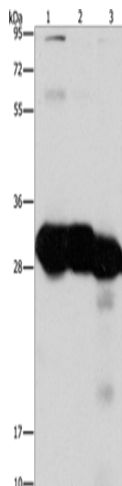
ketohexokinase (KHK) Rabbit Polyclonal Antibody

Product data:

Product Type:	Primary Antibodies
Applications:	WB
Recommended Dilution:	WB: 1000-5000 WB positive control: Mouse liver and kidney tissue, human fetal liver tissue
Reactivity:	Human, Mouse
Host:	Rabbit
Isotype:	IgG
Clonality:	Polyclonal
Immunogen:	Fusion protein of human KHK
Formulation:	pH7.4 PBS, 0.05% NaN ₃ , 40% Glycerol
Purification:	Antigen affinity purification
Conjugation:	Unconjugated
Storage:	Store at -20°C as received.
Stability:	Stable for 12 months from date of receipt.
Predicted Protein Size:	33 kDa
Gene Name:	ketohexokinase
Database Link:	NP_000212 Entrez Gene 16548 Mouse Entrez Gene 3795 Human P50053
Background:	This gene encodes ketohexokinase that catalyzes conversion of fructose to fructose-1-phosphate. The product of this gene is the first enzyme with a specialized pathway that catabolizes dietary fructose. Alternatively spliced transcript variants encoding different isoforms have been identified.
Synonyms:	ketohexokinase; ketohexokinase (fructokinase)
Protein Families:	Druggable Genome
Protein Pathways:	Fructose and mannose metabolism, Metabolic pathways



[View online »](#)

Product images:

Gel: 15%SDS-PAGE

Lysate: 40 µg

Lane 1-3: Mouse liver tissue

Mouse kidney tissue

human fetal liver tissue

Primary antibody: [TA349643] (KHK Antibody) at dilution 1/1350

Secondary antibody: Goat anti rabbit IgG at 1/8000 dilution

Exposure time: 3 seconds