

## Product datasheet for **TA349641**

### CRM1 (XPO1) Rabbit Polyclonal Antibody

#### Product data:

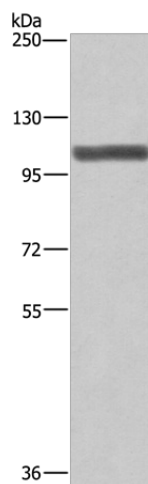
Product Type:	Primary Antibodies
Applications:	IHC, WB
Recommended Dilution:	WB: 200-1000 WB positive control: NIH/3T3 cells IHC: 25-100 Positive control: Human thyroid cancer Predicted cell location: Cytoplasm and Nucleus
Reactivity:	Human, Mouse, Rat
Host:	Rabbit
Isotype:	IgG
Clonality:	Polyclonal
Immunogen:	Fusion protein of human XPO1
Formulation:	pH7.4 PBS, 0.05% NaN <sub>3</sub> , 40% Glycerol
Concentration:	lot specific
Purification:	Antigen affinity purification
Conjugation:	Unconjugated
Storage:	Store at -20°C as received.
Stability:	Stable for 12 months from date of receipt.
Predicted Protein Size:	124 kDa
Gene Name:	exportin 1
Database Link:	<a href="#">NP_003391</a> <a href="#">Entrez Gene 85252 Rat</a> <a href="#">Entrez Gene 103573 Mouse</a> <a href="#">Entrez Gene 7514 Human</a> <a href="#">O14980</a>
Background:	The protein encoded by this gene mediates leucine-rich nuclear export signal (NES)-dependent protein transport. Exportin 1 specifically inhibits the nuclear export of Rev and U snRNAs. It is involved in the control of several cellular processes by controlling the localization of cyclin B, MPAK, and MAPKAP kinase 2. This protein also regulates NFAT and AP-1.
Synonyms:	CRM1; emb; exp1



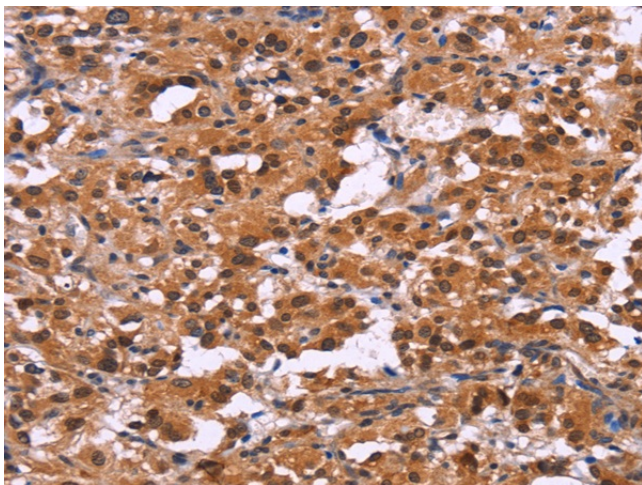
[View online »](#)

Protein Families: Druggable Genome

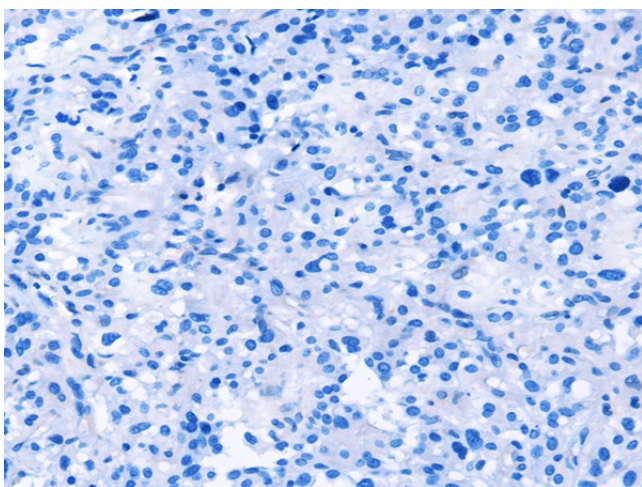
### Product images:



Gel: 6%SDS-PAGE  
Lysate: 40  $\mu$ g  
Lane: NIH/3T3 cells  
Primary antibody: TA349641 (XPO1 Antibody) at dilution 1/275  
Secondary antibody: Goat anti rabbit IgG at 1/8000 dilution  
Exposure time: 1 minute



Immunohistochemistry of paraffin-embedded Human thyroid cancer tissue using TA349641 (XPO1 Antibody) at dilution 1/25 (Original magnification:  $\times$ 200)



Immunohistochemistry of paraffin-embedded Human thyroid cancer tissue using TA349641 (XPO1 Antibody) at dilution 1/25, treated with fusion protein. (Original magnification: ×200)