

Product datasheet for **TA349632S**

THOC7 Rabbit Polyclonal Antibody

Product data:

| | |
|-------------------------|--|
| Product Type: | Primary Antibodies |
| Applications: | IHC, WB |
| Recommended Dilution: | WB: 500-2000 WB positive control: Mouse spleen and human fetal liver tissue, hela cells and mouse testis tissue, A431 cells IHC: 25-100 Positive control: Human lung cancer Predicted cell location: Nucleus |
| Reactivity: | Human, Mouse |
| Host: | Rabbit |
| Isotype: | IgG |
| Clonality: | Polyclonal |
| Immunogen: | Fusion protein of human THOC7 |
| Formulation: | pH7.4 PBS, 0.05% NaN ₃ , 40% Glycerol |
| Purification: | Antigen affinity purification |
| Conjugation: | Unconjugated |
| Storage: | Store at -20°C as received. |
| Stability: | Stable for 12 months from date of receipt. |
| Predicted Protein Size: | 24 kDa |
| Gene Name: | THO complex 7 |
| Database Link: | NP_079351 Entrez Gene 80145 Human Q6I9Y2 |



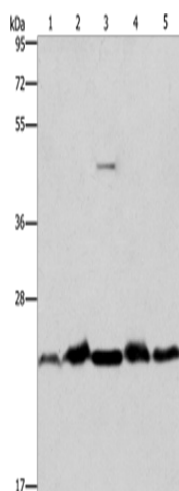
[View online »](#)

Background:

NIF3L1 BP1 (Ngg1-interacting factor 3-like 1 binding protein 1), also known as THOC7 (THO complex subunit 7 homolog), fSAP24 or hTREX30, is a 204 amino acid cytoplasmic and nuclear protein that belongs to the THOC7 family and interacts with NIF3L1. NIF3L1 BP1 is a component of the THO/TREX complex that is recruited to transcribed genes and travels along with RNA polymerase II (Pol II) during elongation, coupling Pol II with RNA splicing and export factors. The THO/TREX complex also plays a role in the export of Kaposi's sarcoma-associated herpesvirus (KSHV) intronless mRNAs and infectious virus production. The gene that encodes NIF3L1 BP1 maps to human chromosome 3p14.1.

Synonyms:

fSAP24; hTREX30; NIF3L1BP1

Product images:


Gel: 10%SDS-PAGE

Lysate: 40 µg

Lane 1-5: Mouse spleen tissue

human fetal liver tissue

hela cells

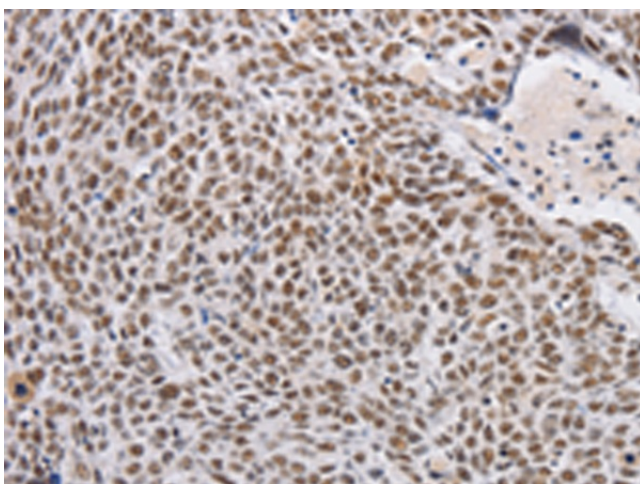
mouse testis tissue

A431 cells

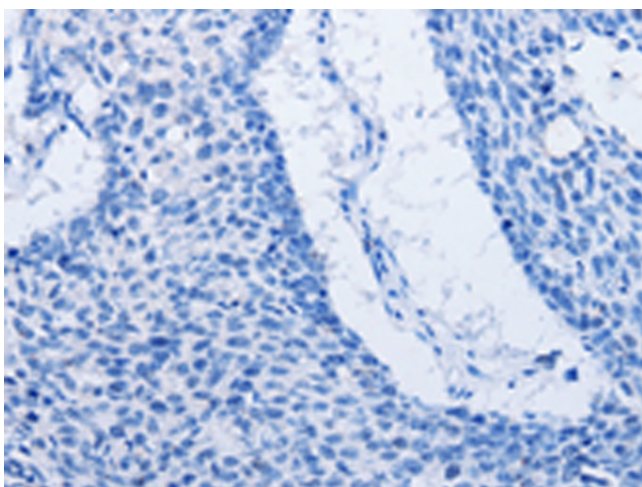
Primary antibody: [TA349632] (THOC7 Antibody)
at dilution 1/500

Secondary antibody: Goat anti rabbit IgG at
1/8000 dilution

Exposure time: 15 seconds



Immunohistochemistry of paraffin-embedded
Human lung cancer tissue using [TA349632]
(THOC7 Antibody) at dilution 1/30 (Original
magnification: ×200)



Immunohistochemistry of paraffin-embedded Human lung cancer tissue using [TA349632] (THOC7 Antibody) at dilution 1/30, treated with fusion protein. (Original magnification: ×200)