

Product datasheet for **TA349630S**

Neuronal membrane glycoprotein M6 a (GPM6A) Rabbit Polyclonal Antibody

Product data:

| | |
|-------------------------|--|
| Product Type: | Primary Antibodies |
| Applications: | IHC, WB |
| Recommended Dilution: | WB: 1000-5000 WB positive control: Human fetal brain tissue IHC: 50-200 Positive control: Human brain Predicted cell location: Cytoplasm |
| Reactivity: | Human, Mouse, Rat |
| Host: | Rabbit |
| Isotype: | IgG |
| Clonality: | Polyclonal |
| Immunogen: | Fusion protein of human GPM6A |
| Formulation: | pH7.4 PBS, 0.05% NaN ₃ , 40% Glycerol |
| Purification: | Antigen affinity purification |
| Conjugation: | Unconjugated |
| Storage: | Store at -20°C as received. |
| Stability: | Stable for 12 months from date of receipt. |
| Predicted Protein Size: | 31 kDa |
| Gene Name: | glycoprotein M6A |
| Database Link: | NP_005268 Entrez Gene 234267 MouseEntrez Gene 306439 RatEntrez Gene 2823 Human P51674 |



[View online »](#)

Background:

Neuronal membrane glycoprotein M6-a is a protein that in humans is encoded by the GPM6A gene. Involved in neuronal differentiation, including differentiation and migration of neuronal stem cells. Plays a role in neuronal plasticity and is involved in neurite and filopodia outgrowth, filopodia motility and probably synapse formation. GPM6A-induced filopodia formation involves mitogen-activated protein kinase (MAPK) and Src signaling pathways. May be involved in neuronal NGF-dependent Ca²⁺ influx. May be involved in regulation of endocytosis and intracellular trafficking of G-protein-coupled receptors (GPCRs); enhances internalization and recycling of mu-type opioid receptor.

Synonyms:

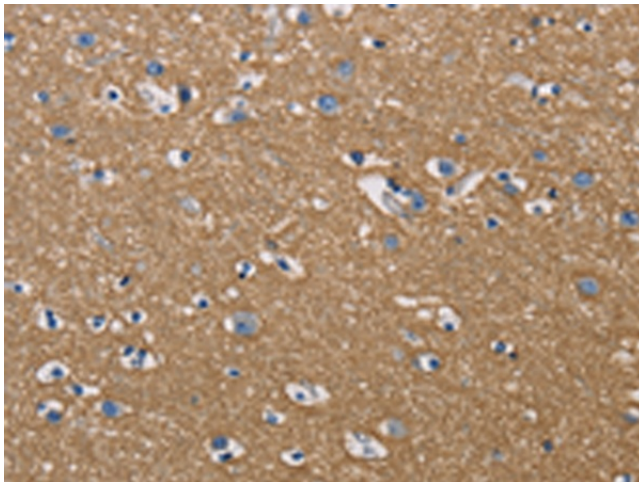
GPM6; M6A

Protein Families:

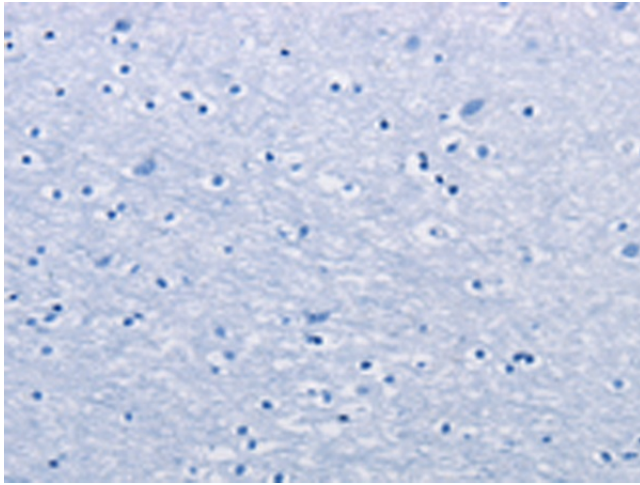
Transmembrane

Product images:

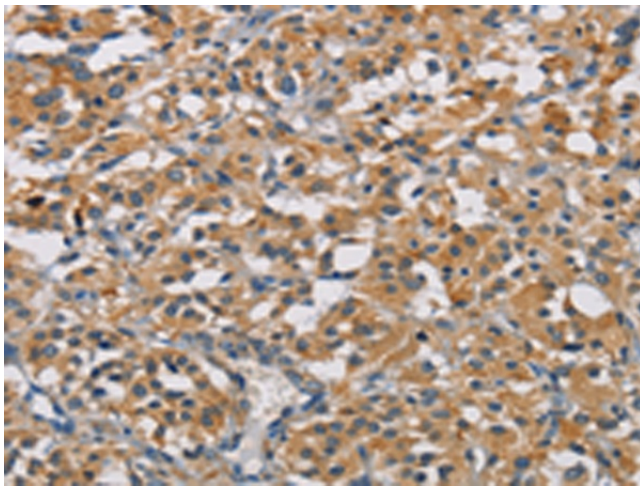

Gel: 8%SDS-PAGE
 Lysate: 20 µg
 Lane: Human fetal brain tissue
 Primary antibody: [TA349630] (GPM6A Antibody) at dilution 1/1050
 Secondary antibody: Goat anti rabbit IgG at 1/8000 dilution
 Exposure time: 1 second



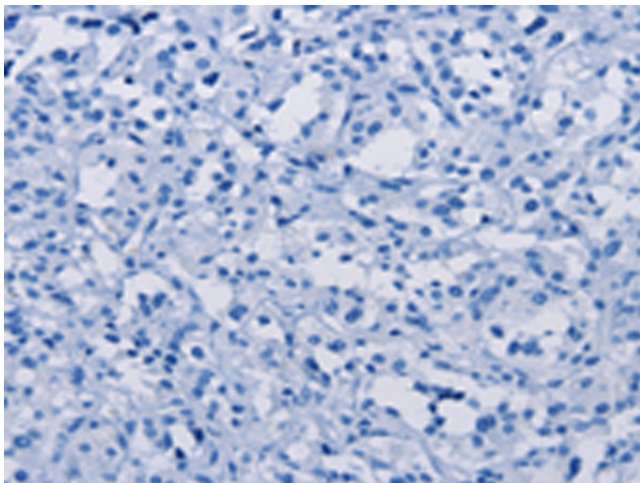
Immunohistochemistry of paraffin-embedded Human brain tissue using [TA349630] (GPM6A Antibody) at dilution 1/50 (Original magnification: ×200)



Immunohistochemistry of paraffin-embedded Human brain tissue using [TA349630] (GPM6A Antibody) at dilution 1/50, treated with fusion protein. (Original magnification: ×200)



Immunohistochemistry of paraffin-embedded Human thyroid cancer tissue using [TA349630] (GPM6A Antibody) at dilution 1/50 (Original magnification: ×200)



Immunohistochemistry of paraffin-embedded Human thyroid cancer tissue using [TA349630] (GPM6A Antibody) at dilution 1/50, treated with fusion protein. (Original magnification: ×200)