

## Product datasheet for **TA349628**

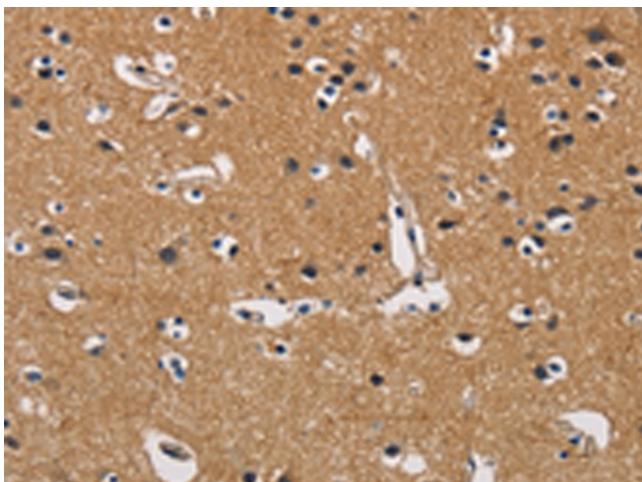
### **PGEA1 (CBY1) Rabbit Polyclonal Antibody**

#### **Product data:**

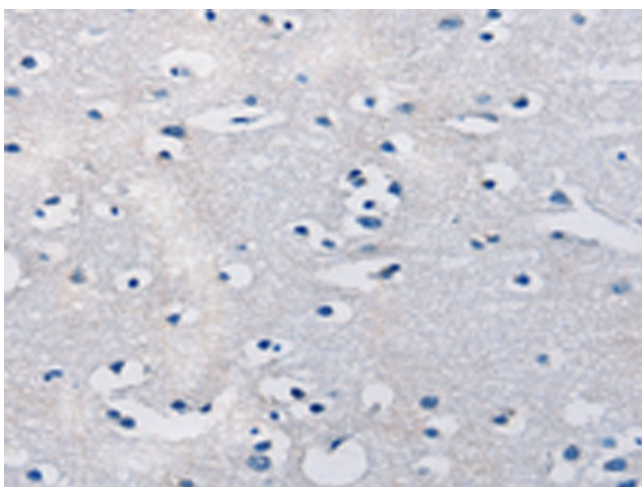
Product Type:	Primary Antibodies
Applications:	IHC
Recommended Dilution:	IHC: 50-200 Positive control: Human brain Predicted cell location: Cytoplasm
Reactivity:	Human, Mouse, Rat
Host:	Rabbit
Isotype:	IgG
Clonality:	Polyclonal
Immunogen:	Fusion protein of human CBY1
Formulation:	pH7.4 PBS, 0.05% NaN <sub>3</sub> , 40% Glycerol
Concentration:	lot specific
Purification:	Antigen affinity purification
Conjugation:	Unconjugated
Storage:	Store at -20°C as received.
Stability:	Stable for 12 months from date of receipt.
Gene Name:	chibby homolog 1 (Drosophila)
Database Link:	<a href="#">NP_056188</a> <a href="#">Entrez Gene 25776 Human</a> <a href="#">Q9Y3M2</a>
Background:	Beta-catenin is a transcriptional activator and oncoprotein involved in the development of several cancers. The protein encoded by this gene interacts directly with the C-terminal region of beta-catenin, inhibiting oncogenic beta-catenin-mediated transcriptional activation by competing with transcription factors for binding to beta-catenin. Two transcript variants encoding different isoforms have been found for this gene.
Synonyms:	arb1; C22orf2; CBY; HS508I15A; PGEA1; PIGEA-14; PIGEA14
Protein Families:	Transcription Factors



[View online »](#)

**Product images:**

Immunohistochemistry of paraffin-embedded Human brain tissue using TA349628 (CBY1 Antibody) at dilution 1/60 (Original magnification: ×200)



Immunohistochemistry of paraffin-embedded Human brain tissue using TA349628 (CBY1 Antibody) at dilution 1/60, treated with fusion protein. (Original magnification: ×200)