

Product datasheet for **TA349625**

CDC5L Rabbit Polyclonal Antibody

Product data:

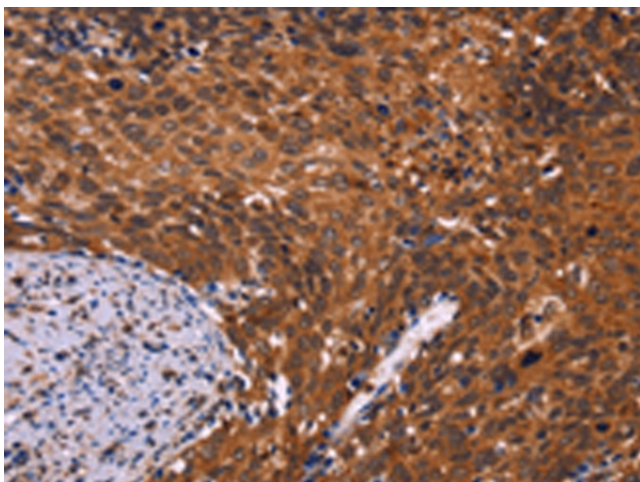
Product Type:	Primary Antibodies
Applications:	IHC
Recommended Dilution:	IHC: 100-300 Positive control: Human cervical cancer Predicted cell location: Nucleus
Reactivity:	Human, Mouse, Rat
Host:	Rabbit
Isotype:	IgG
Clonality:	Polyclonal
Immunogen:	Fusion protein of human CDC5L
Formulation:	pH7.4 PBS, 0.05% NaN ₃ , 40% Glycerol
Concentration:	lot specific
Purification:	Antigen affinity purification
Conjugation:	Unconjugated
Storage:	Store at -20°C as received.
Stability:	Stable for 12 months from date of receipt.
Gene Name:	cell division cycle 5 like
Database Link:	NP_001244 Entrez Gene 71702 Mouse Entrez Gene 85434 Rat Entrez Gene 988 Human Q99459
Background:	The protein encoded by this gene shares a significant similarity with Schizosaccharomyces pombe cdc5 gene product, which is a cell cycle regulator important for G2/M transition. This protein has been demonstrated to act as a positive regulator of cell cycle G2/M progression. It was also found to be an essential component of a non-snRNA spliceosome, which contains at least five additional protein factors and is required for the second catalytic step of pre-mRNA splicing.
Synonyms:	CDC5; CDC5-LIKE; CEF1; dj319D22.1; PCDC5RP
Protein Families:	Transcription Factors



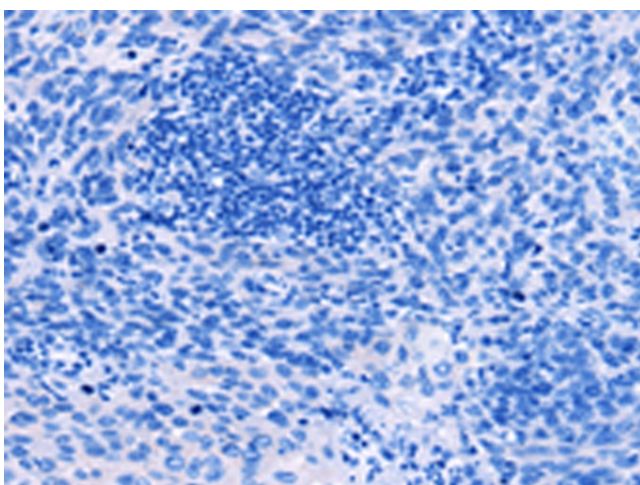
[View online »](#)

Protein Pathways: Spliceosome

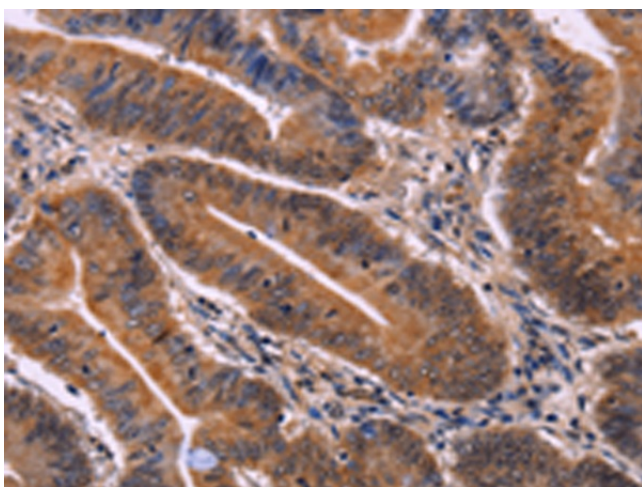
Product images:



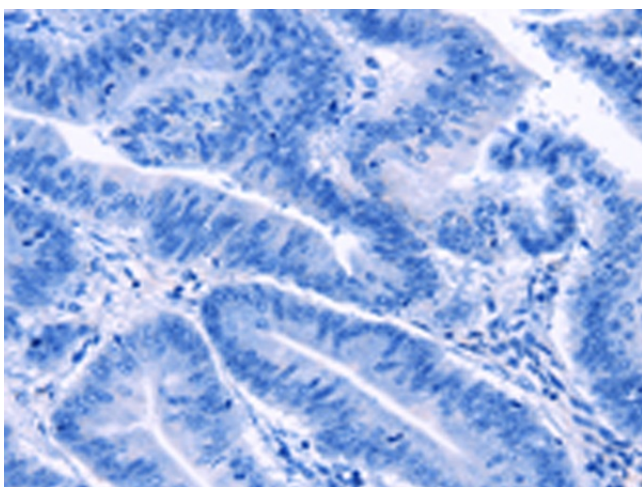
Immunohistochemistry of paraffin-embedded Human cervical cancer tissue using TA349625 (CDC5L Antibody) at dilution 1/40 (Original magnification: $\times 200$)



Immunohistochemistry of paraffin-embedded Human cervical cancer tissue using TA349625 (CDC5L Antibody) at dilution 1/40, treated with fusion protein. (Original magnification: $\times 200$)



Immunohistochemistry of paraffin-embedded Human colon cancer tissue using TA349625 (CDC5L Antibody) at dilution 1/40 (Original magnification: $\times 200$)



Immunohistochemistry of paraffin-embedded Human colon cancer tissue using TA349625 (CDC5L Antibody) at dilution 1/40, treated with fusion protein. (Original magnification: $\times 200$)