

## Product datasheet for **TA349624**

### LOX 1 (OLR1) Rabbit Polyclonal Antibody

#### Product data:

Product Type:	Primary Antibodies
Applications:	IHC, WB
Recommended Dilution:	WB: 200-1000 WB positive control: Human placenta tissue IHC: 50-200 Positive control: Human thyroid cancer Predicted cell location: Cytoplasm
Reactivity:	Human
Host:	Rabbit
Isotype:	IgG
Clonality:	Polyclonal
Immunogen:	Fusion protein of human OLR1
Formulation:	pH7.4 PBS, 0.05% NaN <sub>3</sub> , 40% Glycerol
Concentration:	lot specific
Purification:	Antigen affinity purification
Conjugation:	Unconjugated
Storage:	Store at -20°C as received.
Stability:	Stable for 12 months from date of receipt.
Predicted Protein Size:	31 kDa
Gene Name:	oxidized low density lipoprotein receptor 1
Database Link:	<a href="#">NP_002534</a> <a href="#">Entrez Gene 4973 Human</a> <a href="#">P78380</a>



[View online »](#)

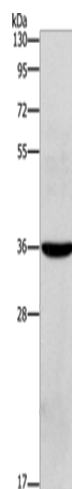
**Background:** This gene encodes a low density lipoprotein receptor that belongs to the C-type lectin superfamily. This gene is regulated through the cyclic AMP signaling pathway. The encoded protein binds, internalizes and degrades oxidized low-density lipoprotein. This protein may be involved in the regulation of Fas-induced apoptosis. This protein may play a role as a scavenger receptor. Mutations of this gene have been associated with atherosclerosis, risk of myocardial infarction, and may modify the risk of Alzheimer's disease. Alternate splicing results in multiple transcript variants.

**Synonyms:** CLEC8A; LOX1; LOXIN; SCARE1; SLOX1

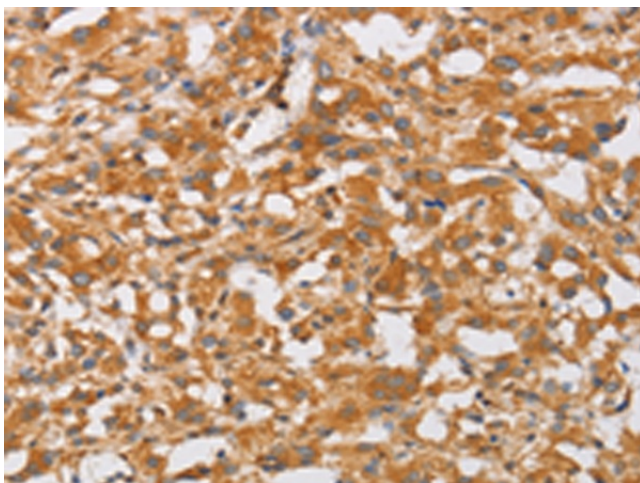
**Protein Families:** Druggable Genome, Secreted Protein, Transmembrane

**Protein Pathways:** PPAR signaling pathway

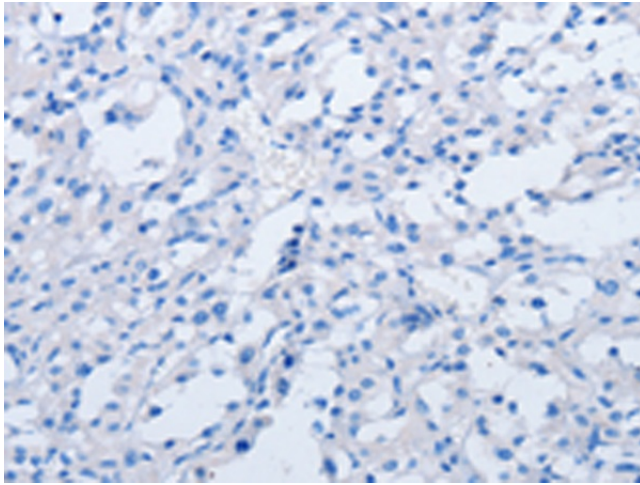
### Product images:



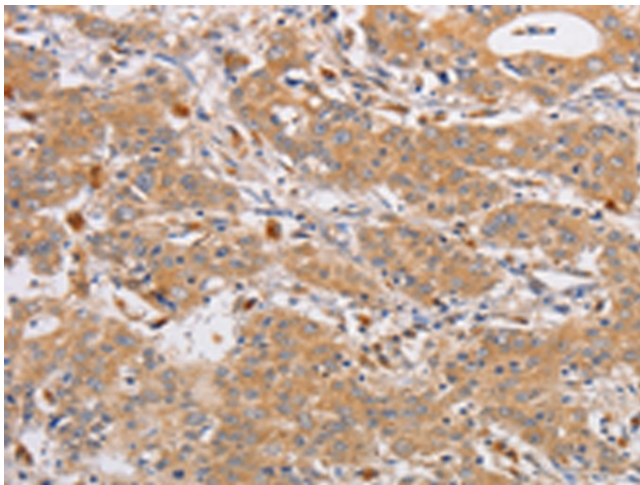
Gel: 10%SDS-PAGE  
Lysate: 40 µg  
Lane: Human placenta tissue  
Primary antibody: TA349624 (OLR1 Antibody) at dilution 1/450  
Secondary antibody: Goat anti rabbit IgG at 1/8000 dilution  
Exposure time: 20 seconds



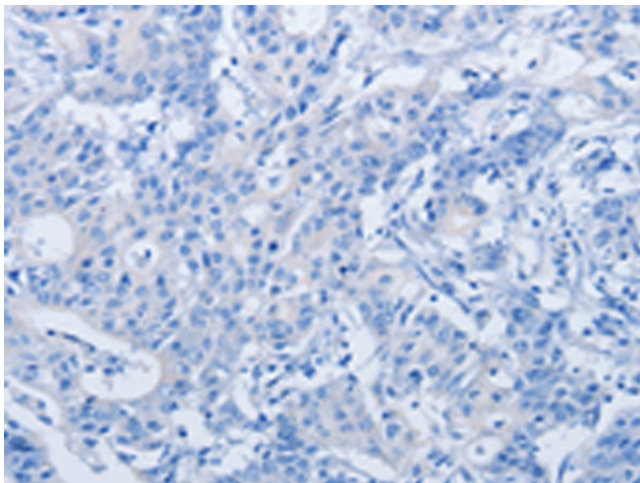
Immunohistochemistry of paraffin-embedded Human thyroid cancer tissue using TA349624 (OLR1 Antibody) at dilution 1/50 (Original magnification: ×200)



Immunohistochemistry of paraffin-embedded Human thyroid cancer tissue using TA349624 (OLR1 Antibody) at dilution 1/50, treated with fusion protein. (Original magnification: ×200)



Immunohistochemistry of paraffin-embedded Human gastric cancer tissue using TA349624 (OLR1 Antibody) at dilution 1/50 (Original magnification: ×200)



Immunohistochemistry of paraffin-embedded Human gastric cancer tissue using TA349624 (OLR1 Antibody) at dilution 1/50, treated with fusion protein. (Original magnification: ×200)