

## Product datasheet for **TA349620S**

### FAK (PTK2) Rabbit Polyclonal Antibody

#### Product data:

Product Type:	Primary Antibodies
Applications:	WB
Recommended Dilution:	WB: 200-1000 WB positive control: NIH/3T3 cells
Reactivity:	Human, Mouse, Rat
Host:	Rabbit
Isotype:	IgG
Clonality:	Polyclonal
Immunogen:	Fusion protein of human PTK2
Formulation:	pH7.4 PBS, 0.05% NaN <sub>3</sub> , 40% Glycerol
Purification:	Antigen affinity purification
Conjugation:	Unconjugated
Storage:	Store at -20°C as received.
Stability:	Stable for 12 months from date of receipt.
Predicted Protein Size:	119 kDa
Gene Name:	protein tyrosine kinase 2
Database Link:	<a href="#">NP_722560</a> <a href="#">Entrez Gene 14083 Mouse</a> <a href="#">Entrez Gene 25614 Rat</a> <a href="#">Entrez Gene 5747 Human</a> <a href="#">Q05397</a>

**Background:** This gene encodes a cytoplasmic protein tyrosine kinase which is found concentrated in the focal adhesions that form between cells growing in the presence of extracellular matrix constituents. The encoded protein is a member of the FAK subfamily of protein tyrosine kinases but lacks significant sequence similarity to kinases from other subfamilies. Activation of this gene may be an important early step in cell growth and intracellular signal transduction pathways triggered in response to certain neural peptides or to cell interactions with the extracellular matrix. Several transcript variants encoding different isoforms have been found for this gene, but the full-length natures of only three of them have been determined.



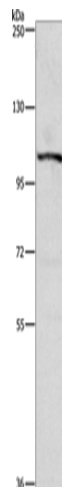
[View online »](#)

**Synonyms:** FADK; FAK; FAK1; FRNK; p125FAK; pp125FAK; PPP1R71

**Protein Families:** Druggable Genome, Protein Kinase

**Protein Pathways:** Axon guidance, Chemokine signaling pathway, ErbB signaling pathway, Focal adhesion, Leukocyte transendothelial migration, Pathways in cancer, Regulation of actin cytoskeleton, Small cell lung cancer, VEGF signaling pathway

### Product images:



Gel: 6%SDS-PAGE  
Lysate: 40  $\mu$ g  
Lane: NIH/3T3 cells  
Primary antibody: [TA349620] (PTK2 Antibody) at dilution 1/300  
Secondary antibody: Goat anti rabbit IgG at 1/8000 dilution  
Exposure time: 30 seconds