

Product datasheet for **TA349618S**

Hexokinase 1 (HK1) Rabbit Polyclonal Antibody

Product data:

Product Type:	Primary Antibodies
Applications:	IHC, WB
Recommended Dilution:	WB: 200-1000 WB positive control: 231 cell IHC: 50-200 Positive control: Human thyroid cancer Predicted cell location: cytoplasm
Reactivity:	Human, Mouse, Rat
Host:	Rabbit
Isotype:	IgG
Clonality:	Polyclonal
Immunogen:	Fusion protein of human HK1
Formulation:	pH7.4 PBS, 0.05% NaN ₃ , 40% Glycerol
Purification:	Antigen affinity purification
Conjugation:	Unconjugated
Storage:	Store at -20°C as received.
Stability:	Stable for 12 months from date of receipt.
Gene Name:	hexokinase 1
Database Link:	NP_277031 Entrez Gene 15275 Mouse Entrez Gene 25058 Rat Entrez Gene 3098 Human P19367

Background: Hexokinases phosphorylate glucose to produce glucose-6-phosphate, the first step in most glucose metabolism pathways. This gene encodes a ubiquitous form of hexokinase which localizes to the outer membrane of mitochondria. Mutations in this gene have been associated with hemolytic anemia due to hexokinase deficiency. Alternative splicing of this gene results in five transcript variants which encode different isoforms, some of which are tissue-specific. Each isoform has a distinct N-terminus; the remainder of the protein is identical among all the isoforms.

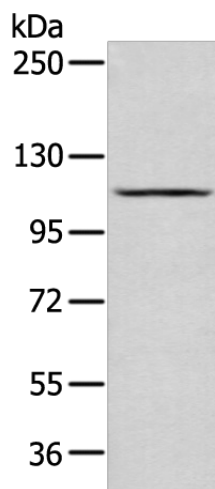


[View online »](#)

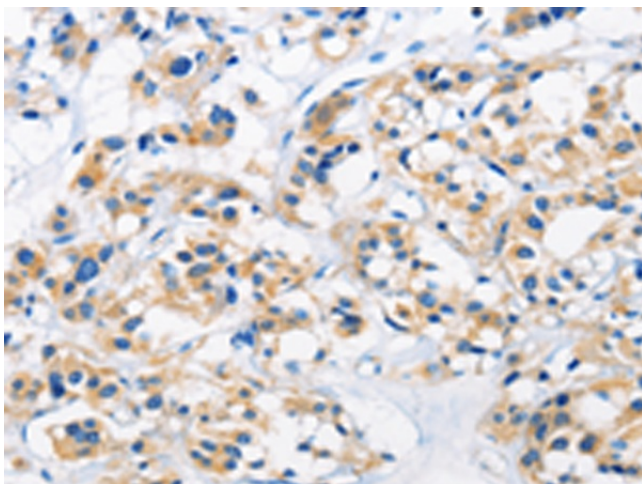
Synonyms: hexokinase; HK; HK1-ta; HK1-tb; HK1-tc; HKD; HKI; HMSNR; HXK1

Protein Families: Druggable Genome

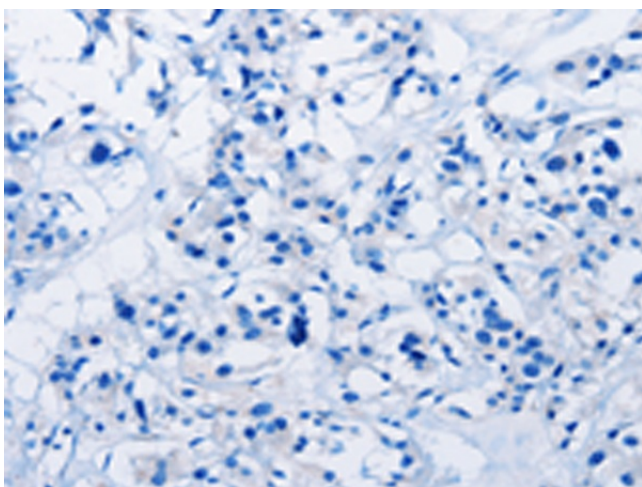
Protein Pathways: Amino sugar and nucleotide sugar metabolism, Fructose and mannose metabolism, Galactose metabolism, Glycolysis / Gluconeogenesis, Insulin signaling pathway, Metabolic pathways, Starch and sucrose metabolism, Type II diabetes mellitus

Product images:

Gel: 6%SDS-PAGE
Lysate: 40 µg
Lane: 231 cell
Primary antibody: [TA349618] (HK1 Antibody) at dilution 1/400
Secondary antibody: Goat anti rabbit IgG at 1/8000 dilution
Exposure time: 30 seconds



Immunohistochemistry of paraffin-embedded Human thyroid cancer tissue using [TA349618] (HK1 Antibody) at dilution 1/50 (Original magnification: ×200)



Immunohistochemistry of paraffin-embedded Human thyroid cancer tissue using [TA349618] (HK1 Antibody) at dilution 1/50, treated with fusion protein. (Original magnification: $\times 200$)