

## Product datasheet for **TA349618**

### Hexokinase 1 (HK1) Rabbit Polyclonal Antibody

#### Product data:

Product Type:	Primary Antibodies
Applications:	IHC, WB
Recommended Dilution:	WB: 200-1000 WB positive control: 231 cell IHC: 50-200 Positive control: Human thyroid cancer Predicted cell location: cytoplasm
Reactivity:	Human, Mouse, Rat
Host:	Rabbit
Isotype:	IgG
Clonality:	Polyclonal
Immunogen:	Fusion protein of human HK1
Formulation:	pH7.4 PBS, 0.05% NaN <sub>3</sub> , 40% Glycerol
Concentration:	lot specific
Purification:	Antigen affinity purification
Conjugation:	Unconjugated
Storage:	Store at -20°C as received.
Stability:	Stable for 12 months from date of receipt.
Gene Name:	hexokinase 1
Database Link:	<a href="#">NP_277031</a> <a href="#">Entrez Gene 15275 MouseEntrez Gene 25058 RatEntrez Gene 3098 Human P19367</a>



[View online »](#)

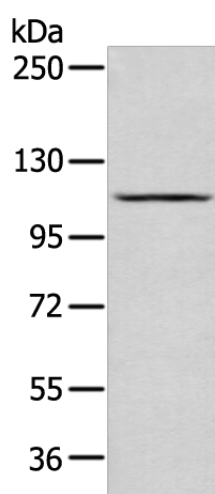
**Background:** Hexokinases phosphorylate glucose to produce glucose-6-phosphate, the first step in most glucose metabolism pathways. This gene encodes a ubiquitous form of hexokinase which localizes to the outer membrane of mitochondria. Mutations in this gene have been associated with hemolytic anemia due to hexokinase deficiency. Alternative splicing of this gene results in five transcript variants which encode different isoforms, some of which are tissue-specific. Each isoform has a distinct N-terminus; the remainder of the protein is identical among all the isoforms.

**Synonyms:** hexokinase; HK; HK1-ta; HK1-tb; HK1-tc; HKD; HKI; HMSNR; HXK1

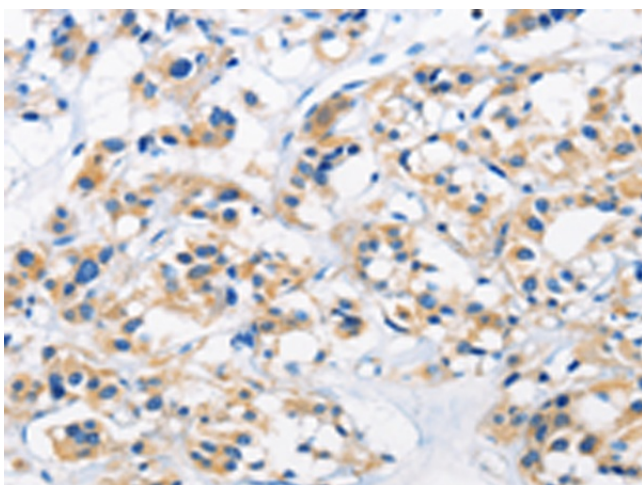
**Protein Families:** Druggable Genome

**Protein Pathways:** Amino sugar and nucleotide sugar metabolism, Fructose and mannose metabolism, Galactose metabolism, Glycolysis / Gluconeogenesis, Insulin signaling pathway, Metabolic pathways, Starch and sucrose metabolism, Type II diabetes mellitus

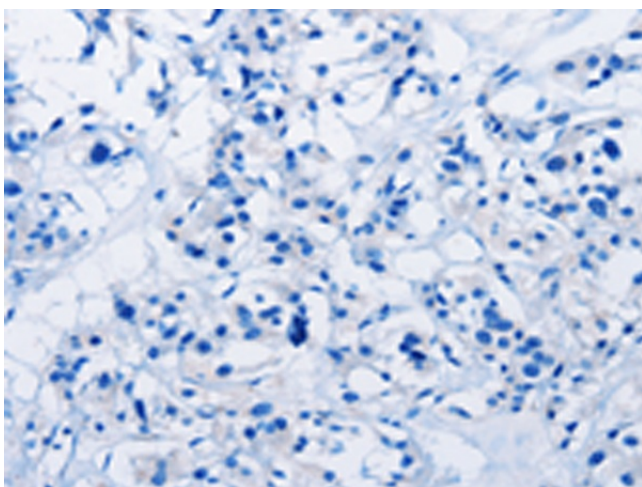
### Product images:



Gel: 6%SDS-PAGE  
Lysate: 40 µg  
Lane: 231 cell  
Primary antibody: TA349618 (HK1 Antibody) at dilution 1/400  
Secondary antibody: Goat anti rabbit IgG at 1/8000 dilution  
Exposure time: 30 seconds



Immunohistochemistry of paraffin-embedded Human thyroid cancer tissue using TA349618 (HK1 Antibody) at dilution 1/50 (Original magnification: ×200)



Immunohistochemistry of paraffin-embedded Human thyroid cancer tissue using TA349618 (HK1 Antibody) at dilution 1/50, treated with fusion protein. (Original magnification: ×200)