

## Product datasheet for **TA349615**

### PFKP Rabbit Polyclonal Antibody

#### Product data:

|                         |   |
|-------------------------|---|
| Product Type:           | Primary Antibodies  |
| Applications:           | IHC, WB   |
| Recommended Dilution:   | WB: 500-2000<br>WB positive control: Hela and PC3 cells<br>IHC: 25-100<br>Positive control: Human thyroid cancer<br>Predicted cell location: Cytoplasm                      |
| Reactivity:             | Human, Mouse, Rat   |
| Host:                   | Rabbit  |
| Isotype:                | IgG   |
| Clonality:              | Polyclonal  |
| Immunogen:              | Fusion protein of human PFKP  |
| Formulation:            | pH7.4 PBS, 0.05% NaN <sub>3</sub> , 40% Glycerol  |
| Concentration:          | lot specific  |
| Purification:           | Antigen affinity purification   |
| Conjugation:            | Unconjugated  |
| Storage:                | Store at -20°C as received.   |
| Stability:              | Stable for 12 months from date of receipt.  |
| Predicted Protein Size: | 86 kDa  |
| Gene Name:              | phosphofructokinase, platelet   |
| Database Link:          | <a href="#">NP_002618</a><br><a href="#">Entrez Gene 56421 Mouse</a> <a href="#">Entrez Gene 60416 Rat</a> <a href="#">Entrez Gene 5214 Human</a><br><a href="#">Q01813</a> |



[View online »](#)

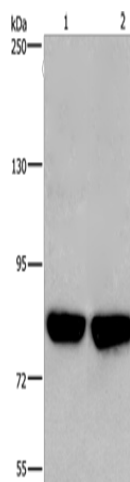
**Background:** The PFKP gene encodes the platelet isoform of phosphofructokinase (PFK) (ATP:D-fructose-6-phosphate-1-phosphotransferase, EC 2.7.1.11). PFK catalyzes the irreversible conversion of fructose-6-phosphate to fructose-1,6-bisphosphate and is a key regulatory enzyme in glycolysis. The PFKP gene, which maps to chromosome 10p, is also expressed in fibroblasts. See also the muscle (PFKM; MIM 610681) and liver (PFKL; MIM 171860) isoforms of phosphofructokinase, which map to chromosomes 12q13 and 21q22, respectively. Vora (1981) [PubMed 6451249] determined that full tetrameric phosphofructokinase enzyme expressed in platelets can be composed of subunits P4, P3L, and P2L2

**Synonyms:** ATP-PFK; PFK-C; PFK-P; PFKF

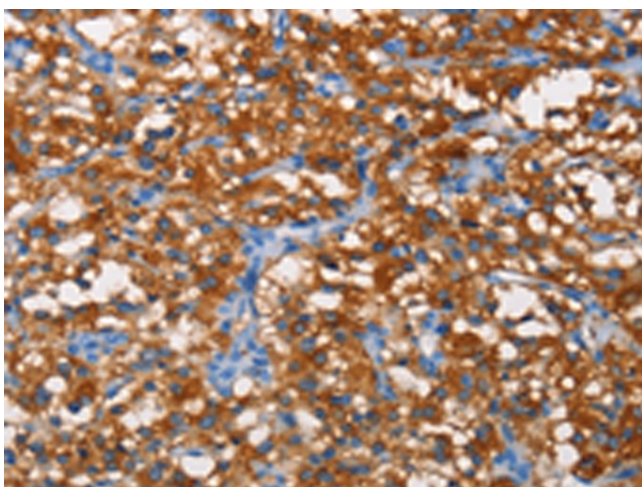
**Protein Families:** Druggable Genome

**Protein Pathways:** Fructose and mannose metabolism, Galactose metabolism, Glycolysis / Gluconeogenesis, Metabolic pathways, Pentose phosphate pathway

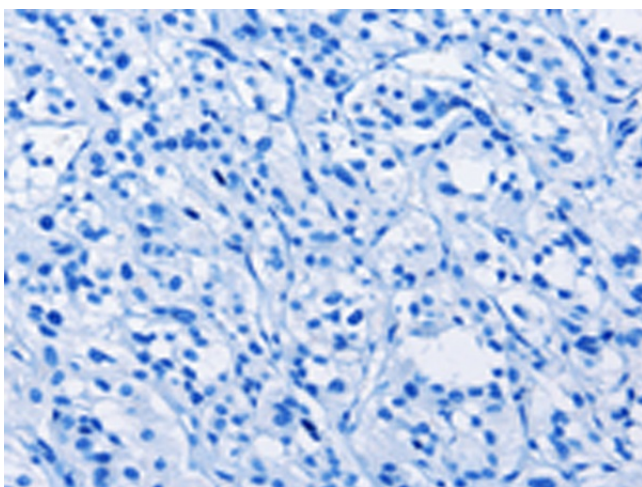
### Product images:



Gel: 10%SDS-PAGE  
Lysate: 40 µg  
Lane 1-2: HeLa cells  
PC3 cells  
Primary antibody: TA349615 (PFKP Antibody) at dilution 1/500  
Secondary antibody: Goat anti rabbit IgG at 1/8000 dilution  
Exposure time: 3 seconds



Immunohistochemistry of paraffin-embedded Human thyroid cancer tissue using TA349615 (PFKP Antibody) at dilution 1/25 (Original magnification: ×200)



Immunohistochemistry of paraffin-embedded Human thyroid cancer tissue using TA349615 (PFKP Antibody) at dilution 1/25, treated with fusion protein. (Original magnification: ×200)