

## Product datasheet for **TA349610S**

### NEK2 Rabbit Polyclonal Antibody

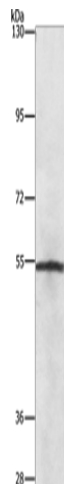
#### Product data:

Product Type:	Primary Antibodies
Applications:	WB
Recommended Dilution:	WB: 500-2000 WB positive control: Lovo cells
Reactivity:	Human, Mouse
Host:	Rabbit
Isotype:	IgG
Clonality:	Polyclonal
Immunogen:	Fusion protein of human NEK2
Formulation:	pH7.4 PBS, 0.05% NaN <sub>3</sub> , 40% Glycerol
Purification:	Antigen affinity purification
Conjugation:	Unconjugated
Storage:	Store at -20°C as received.
Stability:	Stable for 12 months from date of receipt.
Predicted Protein Size:	52 kDa
Gene Name:	NIMA related kinase 2
Database Link:	<a href="#">NP_002488</a> <a href="#">Entrez Gene 18005 Mouse</a> <a href="#">Entrez Gene 4751 Human</a> <a href="#">P51955</a>
Background:	This gene encodes a serine/threonine-protein kinase that is involved in mitotic regulation. This protein is localized to the centrosome, and undetectable during G1 phase, but accumulates progressively throughout the S phase, reaching maximal levels in late G2 phase. Alternatively spliced transcript variants encoding different isoforms with distinct C-termini have been noted for this gene.
Synonyms:	HsPK21; NEK2A; NLK1; PPP1R111; RP67
Protein Families:	Druggable Genome, Protein Kinase



[View online »](#)

## Product images:



Gel: 8%SDS-PAGE

Lysate: 40  $\mu$ g

Lane: Lovo cells

Primary antibody: [TA349610] (NEK2 Antibody) at dilution 1/727

Secondary antibody: Goat anti rabbit IgG at 1/8000 dilution

Exposure time: 1 minute