

## Product datasheet for **TA349608**

### PLK3 Rabbit Polyclonal Antibody

#### Product data:

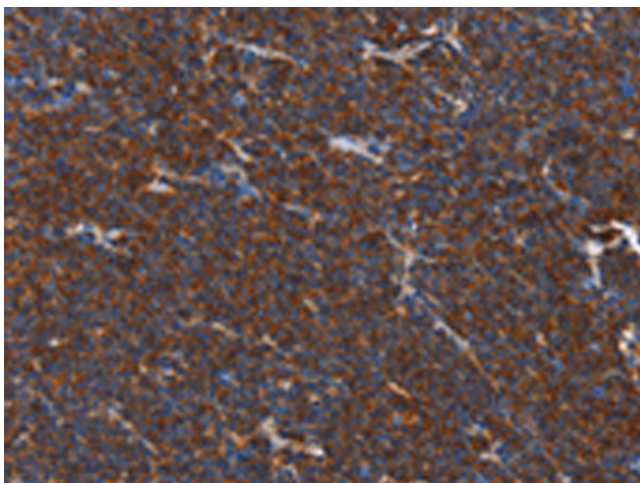
Product Type:	Primary Antibodies
Applications:	IHC
Recommended Dilution:	IHC: 50-200 Positive control: Human lymphoma Predicted cell location: Cytoplasm
Reactivity:	Human, Mouse, Rat
Host:	Rabbit
Isotype:	IgG
Clonality:	Polyclonal
Immunogen:	Fusion protein of human PLK3
Formulation:	pH7.4 PBS, 0.05% NaN <sub>3</sub> , 40% Glycerol
Concentration:	lot specific
Purification:	Antigen affinity purification
Conjugation:	Unconjugated
Storage:	Store at -20°C as received.
Stability:	Stable for 12 months from date of receipt.
Gene Name:	polo like kinase 3
Database Link:	<a href="#">NP_004064</a> <a href="#">Entrez Gene 12795 Mouse</a> <a href="#">Entrez Gene 58936 Rat</a> <a href="#">Entrez Gene 1263 Human</a> <a href="#">Q9H4B4</a>
Background:	Cytokine-inducible kinase is a putative serine/threonine kinase. CNK contains both a catalytic domain and a putative regulatory domain. It may play a role in regulation of cell cycle progression and tumorigenesis. Serine/threonine-protein kinase involved in cell cycle regulation, response to stress and Golgi disassembly. Polo-like kinases act by binding and phosphorylating proteins that are already phosphorylated on a specific motif recognized by the POLO box domains. Phosphorylates ATF2, BCL2L1, CDC25A, CDC25C, CHEK2, HIF1A, JUN, p53/TP53, p73/TP73, PTEN, TOP2A and VRK1.
Synonyms:	CNK; FNK; PLK-3; PRK



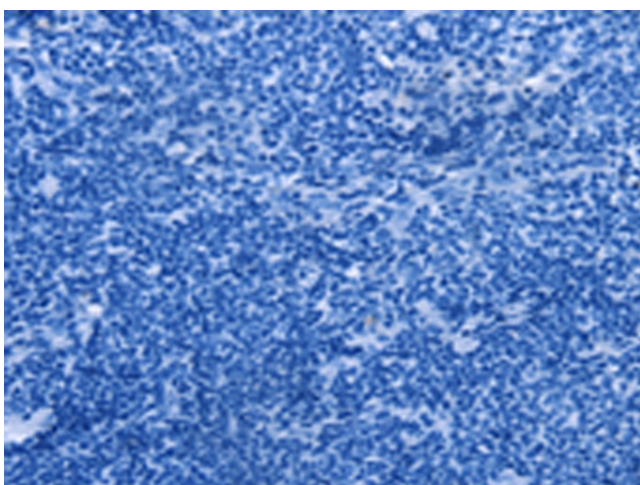
[View online »](#)

Protein Families: Druggable Genome, Protein Kinase

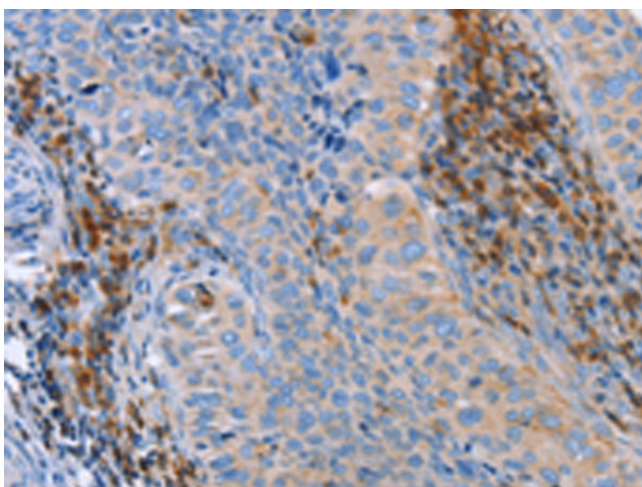
### Product images:



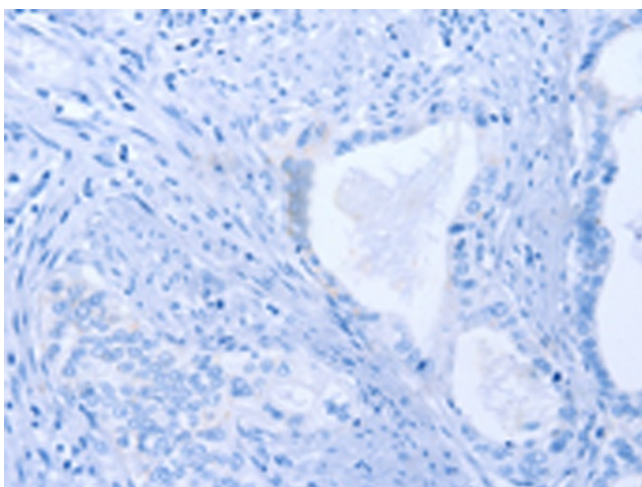
Immunohistochemistry of paraffin-embedded Human lymphoma tissue using TA349608 (PLK3 Antibody) at dilution 1/40 (Original magnification: ×200)



Immunohistochemistry of paraffin-embedded Human lymphoma tissue using TA349608 (PLK3 Antibody) at dilution 1/40, treated with fusion protein. (Original magnification: ×200)



Immunohistochemistry of paraffin-embedded Human cervical cancer tissue using TA349608 (PLK3 Antibody) at dilution 1/40 (Original magnification: ×200)



Immunohistochemistry of paraffin-embedded Human cervical cancer tissue using TA349608 (PLK3 Antibody) at dilution 1/40, treated with fusion protein. (Original magnification: ×200)