

Product datasheet for **TA349605**

MYLK3 Rabbit Polyclonal Antibody

Product data:

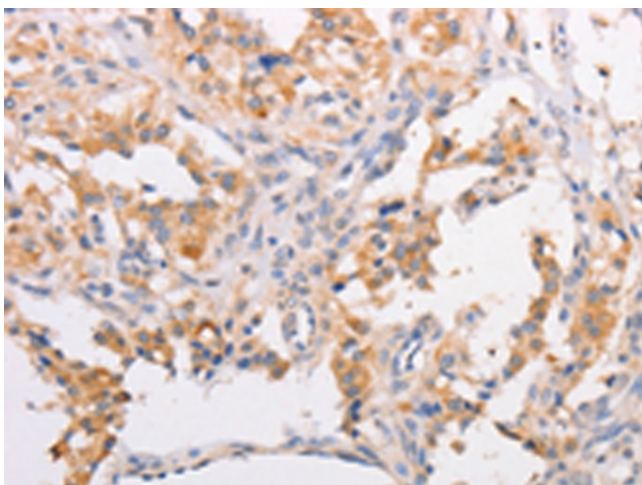
Product Type:	Primary Antibodies
Applications:	IHC
Recommended Dilution:	IHC: 25-100 Positive control: Human thyroid cancer Predicted cell location: Cytoplasm
Reactivity:	Human, Mouse, Rat
Host:	Rabbit
Isotype:	IgG
Clonality:	Polyclonal
Immunogen:	Fusion protein of human MYLK3
Formulation:	pH7.4 PBS, 0.05% NaN ₃ , 40% Glycerol
Concentration:	lot specific
Purification:	Antigen affinity purification
Conjugation:	Unconjugated
Storage:	Store at -20°C as received.
Stability:	Stable for 12 months from date of receipt.
Gene Name:	myosin light chain kinase 3
Database Link:	NP_872299 Entrez Gene 91807 Human Q32MK0
Background:	YLK3 (Myosin light chain kinase 3) is a 795 amino acid cardiac-specific protein that contains one protein kinase domain and belongs to the protein kinase superfamily. Like other MYLK kinases, MYLK3 is thought to play a role in smooth muscle contraction, specifically using magnesium as a cofactor to catalyze the ATP-dependent phosphorylation of Myosin light chain proteins. Additionally, MYLK3 may regulate sarcomere assembly in heart tissue, possibly mediating proper heart function.
Synonyms:	caMLCK; MLCK; MLCK2
Protein Families:	Druggable Genome, Protein Kinase



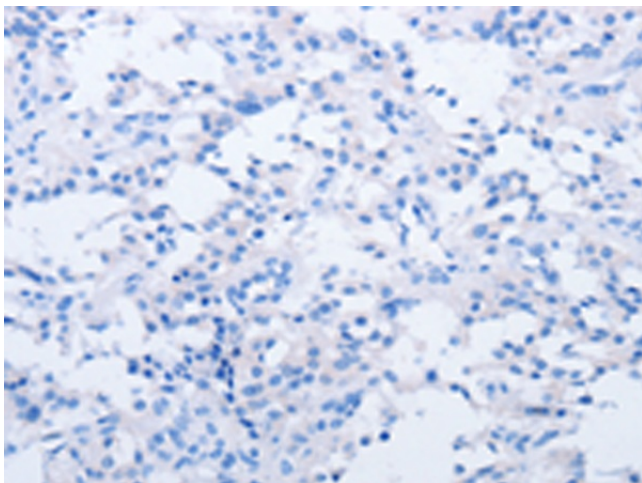
[View online »](#)

Protein Pathways: Calcium signaling pathway, Focal adhesion, Regulation of actin cytoskeleton, Vascular smooth muscle contraction

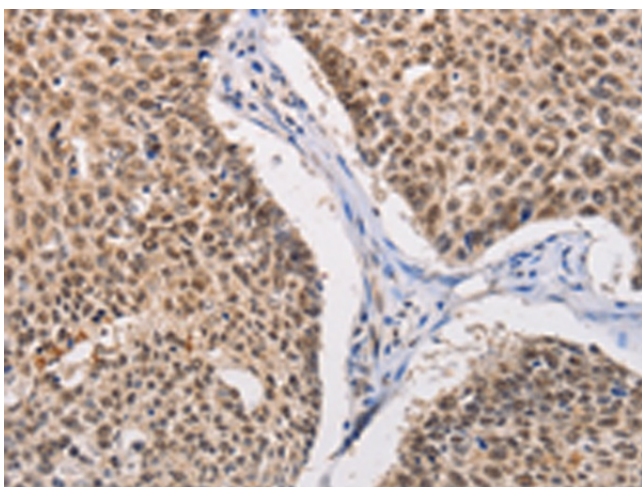
Product images:



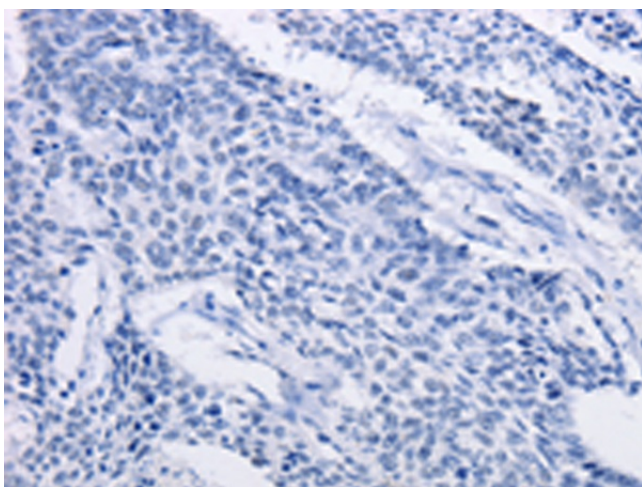
Immunohistochemistry of paraffin-embedded Human thyroid cancer tissue using TA349605 (MYLK3 Antibody) at dilution 1/30 (Original magnification: ×200)



Immunohistochemistry of paraffin-embedded Human thyroid cancer tissue using TA349605 (MYLK3 Antibody) at dilution 1/30, treated with fusion protein. (Original magnification: ×200)



Immunohistochemistry of paraffin-embedded Human lung cancer tissue using TA349605 (MYLK3 Antibody) at dilution 1/30 (Original magnification: $\times 200$)



Immunohistochemistry of paraffin-embedded Human lung cancer tissue using TA349605 (MYLK3 Antibody) at dilution 1/30, treated with fusion protein. (Original magnification: $\times 200$)